

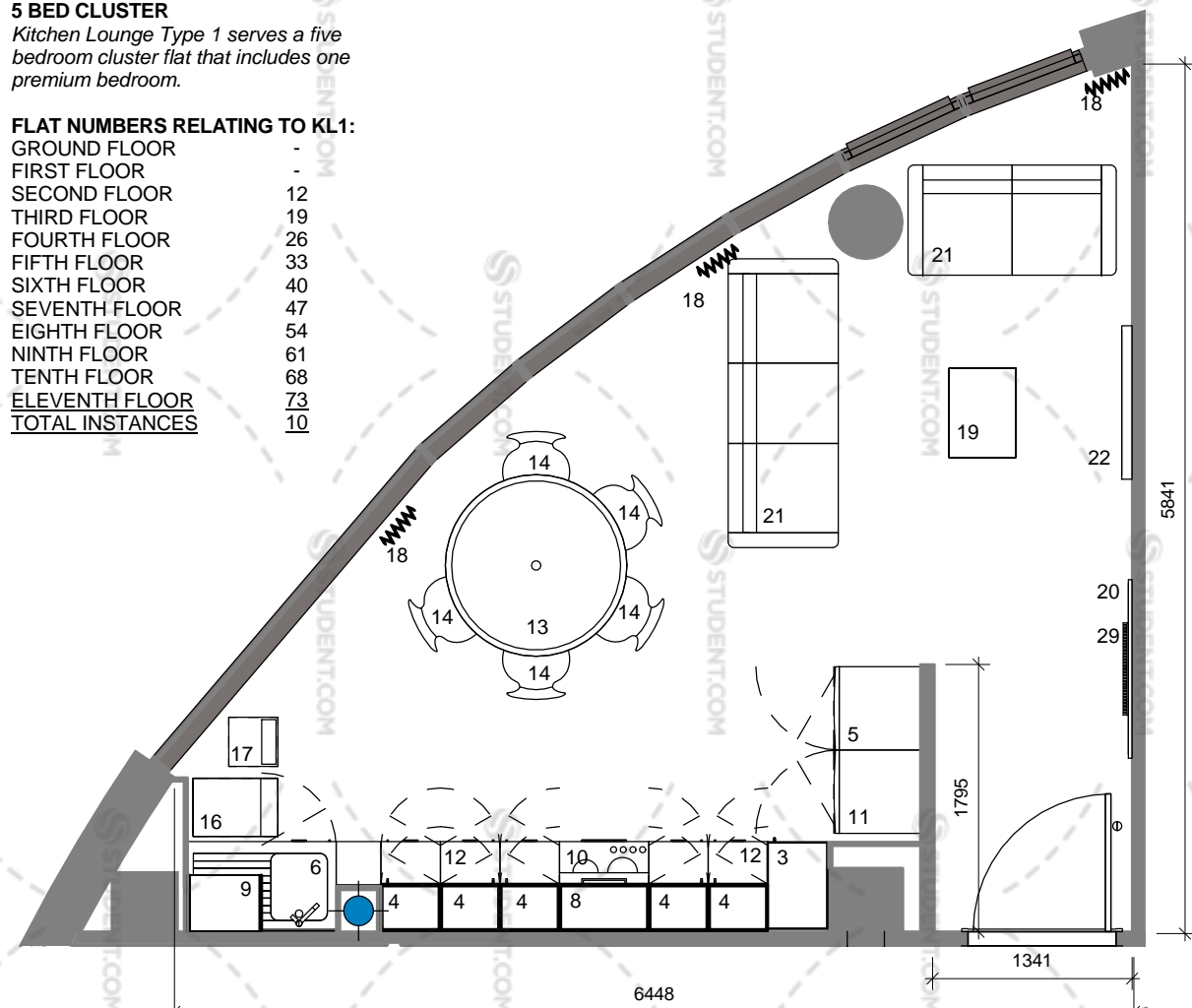
KITCHEN LOUNGE TYPE 1 NOTES

5 BED CLUSTER

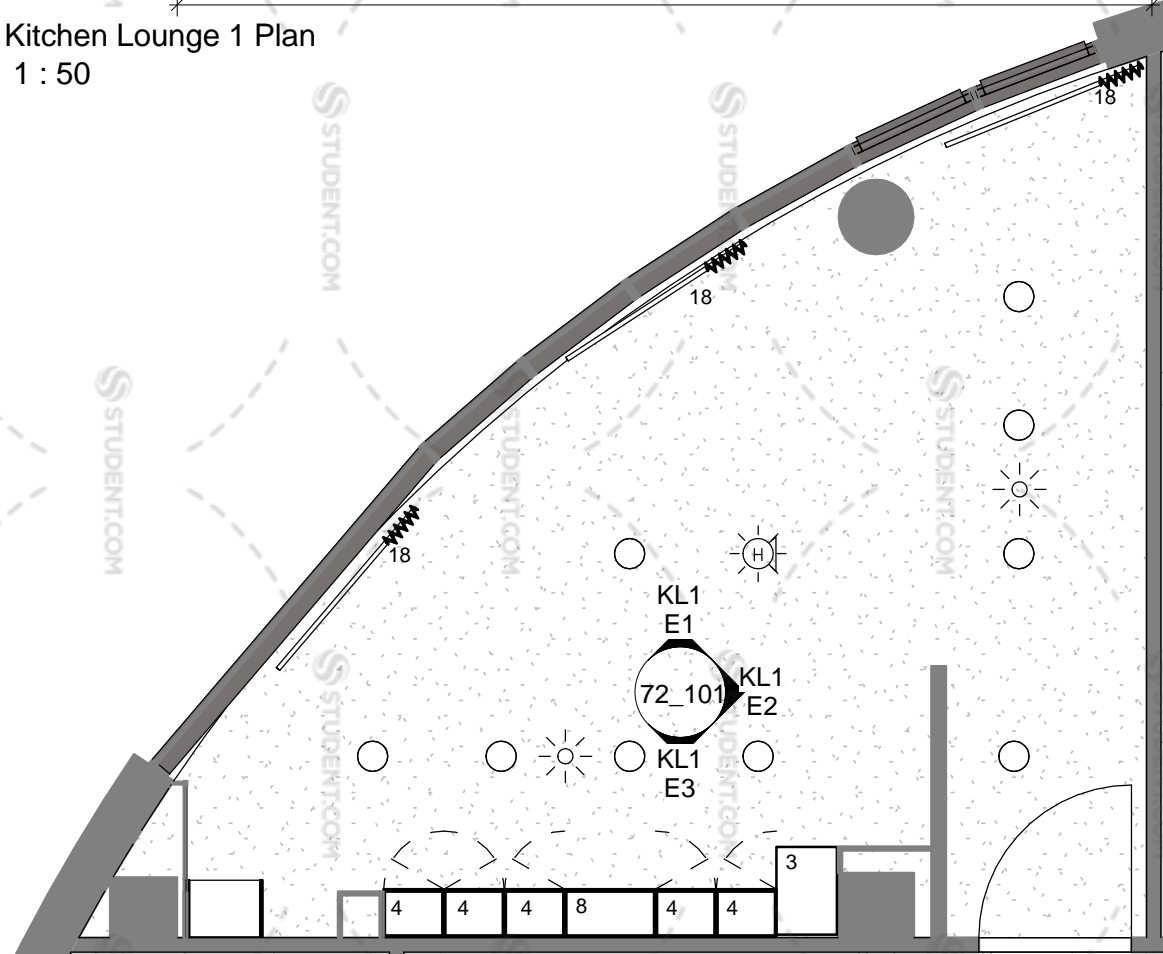
Kitchen Lounge Type 1 serves a five bedroom cluster flat that includes one premium bedroom.

FLAT NUMBERS RELATING TO KL1:

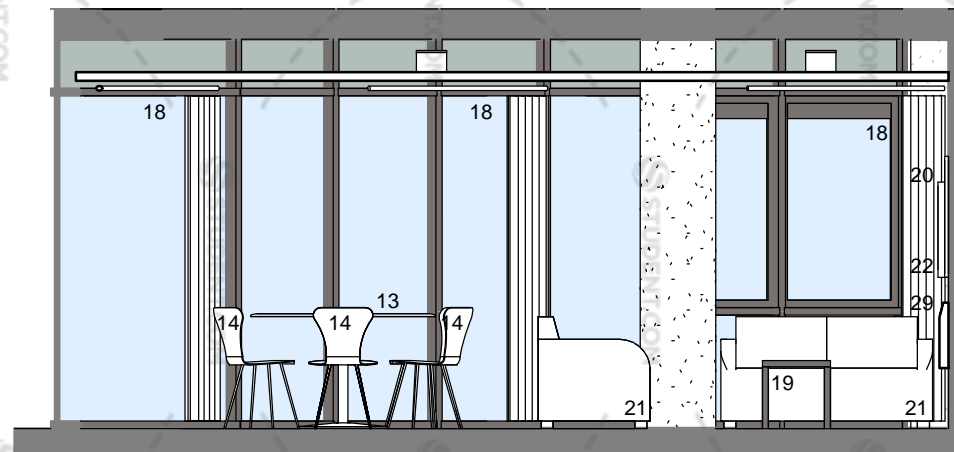
GROUND FLOOR	-
FIRST FLOOR	-
SECOND FLOOR	12
THIRD FLOOR	19
FOURTH FLOOR	26
FIFTH FLOOR	33
SIXTH FLOOR	40
SEVENTH FLOOR	47
EIGHTH FLOOR	54
NINTH FLOOR	61
TENTH FLOOR	68
ELEVENTH FLOOR	73
TOTAL INSTANCES	10



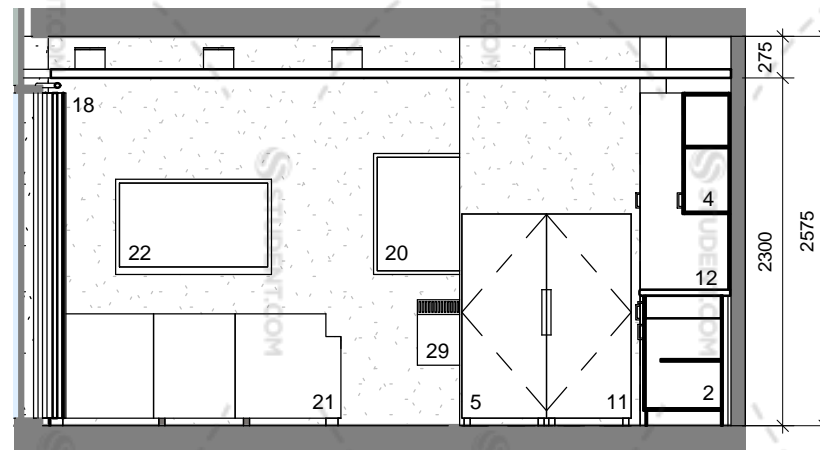
Kitchen Lounge 1 Plan
1 : 50



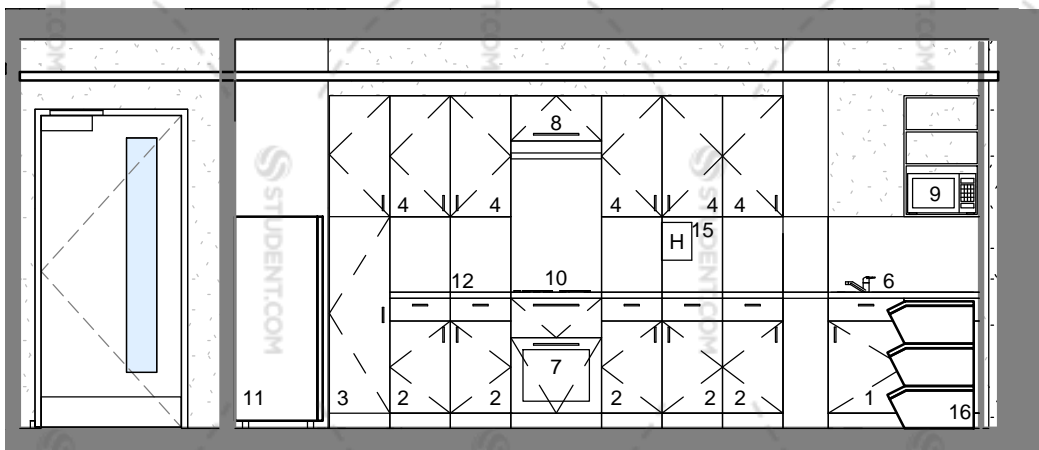
Kitchen Lounge 1 Reflected Ceiling Plan
1 : 50



KL1 Elevation 1
1 : 50



KL1 Elevation 2
1 : 50



KL1 Elevation 3
1 : 50

notes:

All dimensions are in millimetres unless stated otherwise. No dimensions to be scaled from drawings. All dimensions to be checked on site prior to manufacture.

Any discrepancies between drawings and site conditions are to be reported to the contract manager.

This drawing is to be read in conjunction with all relevant Structural Engineers and Mechanical & Electrical Engineers drawings and specification.

KEY

1. Wide base cupboard - W1000mm x H860mm inc 100mm plinth, 1nr drawer and 1nr blank panel. Nr of doors as shown on drawing.
2. Base units with drawer - W400mm x H860 o/a inc 100mm plinth, 1 per student.
3. Tall Cupboard - W400mm x D600mm x H2100 plus 100mm plinth.
4. Wall cupboard - W400mm x H800mm, 1 per student.
5. Fridge - 183 Litre energy A rated, (Hotpoint or similar approved,) 6 shelves + salad drawer.
6. Sink - Stainless steel single drainer with chrome mono mixer taps.
7. Oven - Stainless steel multi function electric fan assisted single built in. Energy A rated (Hotpoint/ Ignis or similar approved)
8. Cooker hood - (Ignis or similar approved.)
9. Microwave oven - Combination Type Daewoo 800w - 20litre.
10. Hob - 4 Ring electric solid plate stainless steel (Hotpoint or similar approved.)
11. Freezer - 113 Litre energy A rated, (Hotpoint or similar approved,) 6 drawers.
12. Worktop - 40mm thick roll edge, 900mm floor to top surface with 400mm high splashback panel to match breakfast bar / worktop.
13. Dining table - 1200mm diameter for 5+ bed cluster, 1000mm diameter for 3 or 4 bed cluster.
14. Dining Chair - 1 per student.
15. Fire Blanket - 1000mm x 1000mm.
16. Recycling bin - 50lt. (nr of compartments to meet LA recycling requirements.)
17. General waste bin - 50lt.
18. Curtains and associated track - to suit window aperture as required. Evolution Eve Mocha fabric with black blackout backing.
19. Coffee table - W600 x H450 x D450 (deep profile as Magenta scheme.)
20. Pinboard - W1200 x H800mm, Camira Lucia fabric range covered, colour - TBC
21. Faux leather tub chair/ 2 seat/ 3 seat sofa mix to give 1 seat per student.
22. Wall mounted TV - 42"
23. Breakfast bar - W800mm, length as drawings, chrome legs (as required.)
24. Bar Stool - leatherette/faux leather finish with chrome base. 1 per student.
25. Accessible base unit - reduced height, on casters.
26. Accessible worktop - adjustable height. Ropox or similar.
27. Fridge Freezer - Combined
28. Cylinder cupboard (for hot water cylinder) - (preferred option to locate cylinder cupboard in cluster corridor where possible.)
29. Wall mounted electric panel heater

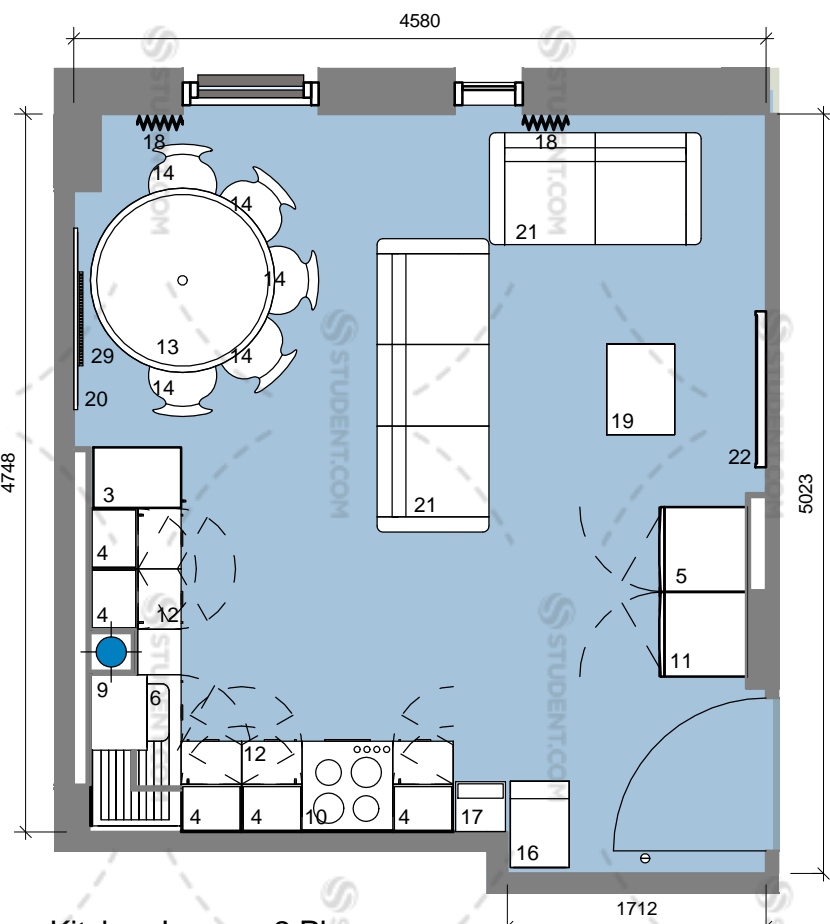
dwg status:

PRELIMINARY

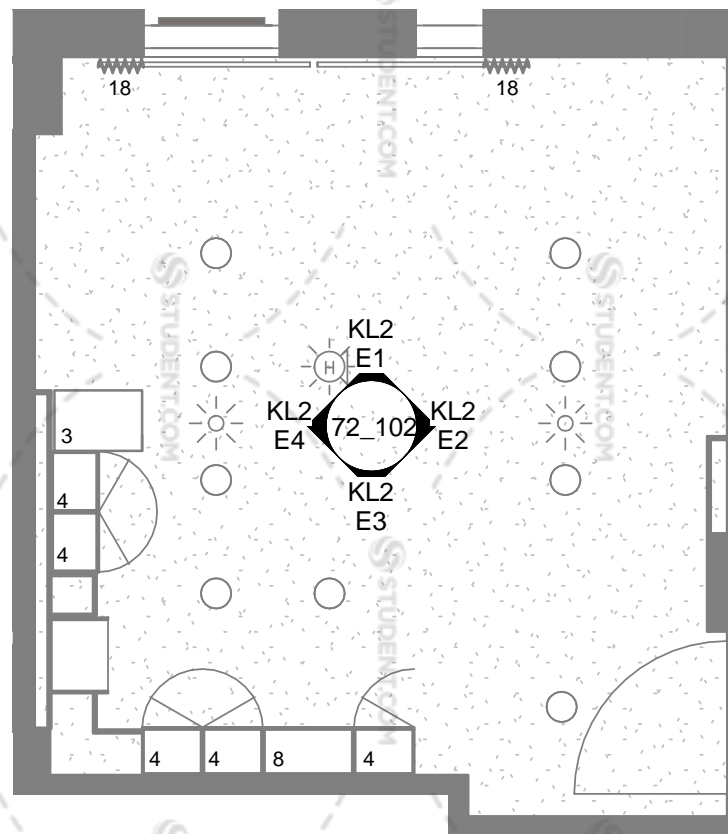
Rev	Description	Date	By	Chk
D	Revised in accordance with Client comments, electric panel heater location shown.	14/05/14	IR	GE
C	Layout revised in line with KSHL comments, including substitution of breakfast bar and stools with dining table and chairs	29/04/14	RD	
B	Layout revised in line with KSHL comments	03/04/14	IR	GE
A	First Issue	07/03/14	RD	IR



dwg title:	Kitchen Lounge Type 1 (five bed cluster)		
job title:	Ablett House for Knightsbridge Student Housing Ltd.		
scale:	1 : 50 @ A3	drawn:	IR
date:	04/03/14	job no:	1425
dwg no:	72_101	rev:	D



Kitchen Lounge 2 Plan
1 : 50



Kitchen Lounge 2 Reflected Ceiling Plan
1 : 50

KITCHEN LOUNGE TYPE 2 NOTES

5 BED CLUSTER
Kitchen Lounge Type 2 serves a five bedroom cluster flat.

FLAT NUMBERS RELATING TO KL2:

GROUND FLOOR	-
FIRST FLOOR	6
SECOND FLOOR	13
THIRD FLOOR	20
FOURTH FLOOR	27
FIFTH FLOOR	34
SIXTH FLOOR	41
SEVENTH FLOOR	48
EIGHTH FLOOR	55
NINTH FLOOR	62
TENTH FLOOR	-
ELEVENTH FLOOR	-
TOTAL INSTANCES	9

notes:
All dimensions are in millimetres unless stated otherwise. No dimensions to be scaled from drawings. All dimensions to be checked on site prior to manufacture.
Any discrepancies between drawings and site conditions are to be reported to the contract manager.
This drawing is to be read in conjunction with all relevant Structural Engineers and Mechanical & Electrical Engineers drawings and specification.

- KEY
- Wide base cupboard - W1000mm x H860mm inc 100mm plinth, 1nr drawer and 1nr blank panel. Nr of doors as shown on drawing.
 - Base units with drawer - W400mm x H860 o/a inc 100mm plinth, 1 per student.
 - Tall Cupboard - W400mm x D600mm x H2100 plus 100mm plinth.
 - Wall cupboard - W400mm x H800mm, 1 per student.
 - Fridge - 183 Litre energy A rated, (Hotpoint or similar approved,) 6 shelves + salad drawer.
 - Sink - Stainless steel single drainer with chrome mono mixer taps.
 - Oven - Stainless steel multi function electric fan assisted single built in. Energy A rated (Hotpoint/ Ignis or similar approved)
 - Cooker hood - (Ignis or similar approved.)
 - Microwave oven - Combination Type Daewoo 800w - 20litre.
 - Hob - 4 Ring electric solid plate stainless steel (Hotpoint or similar approved.)
 - Freezer - 113 Litre energy A rated, (Hotpoint or similar approved.) 6 drawers.
 - Worktop - 40mm thick roll edge, 900mm floor to top surface with 400mm high splashback panel to match breakfast bar / worktop.
 - Dining table - 1200mm diameter for 5+ bed cluster, 1000mm diameter for 3 or 4 bed cluster.
 - Dining Chair - 1 per student.
 - Fire Blanket - 1000mm x 1000mm.
 - Recycling bin - 50lt. (nr of compartments to meet LA recycling requirements.)
 - General waste bin - 50lt.
 - Curtains and associated track - to suit window aperture as required. Evolution Eve Mocha fabric with black blackout backing.
 - Coffee table - W600 x H450 x D450 (deep profile as Magenta scheme.)
 - Pinboard - W1200 x H800mm, Camira Lucia fabric range covered, colour - TBC
 - Faux leather tub chair/ 2 seat/ 3 seat sofa mix to give 1 seat per student.
 - Wall mounted TV - 42"
 - Breakfast bar - W800mm, length as drawings, chrome legs (as required.)
 - Bar Stool - leatherette/faux leather finish with chrome base. 1 per student.
 - Accessible base unit - reduced height, on casters.
 - Accessible worktop - adjustable height. Ropox or similar.
 - Fridge Freezer - Combined
 - Cylinder cupboard (for hot water cylinder) - (preferred option to locate cylinder cupboard in cluster corridor where possible.)
 - Wall mounted electric panel heater

dwg status:

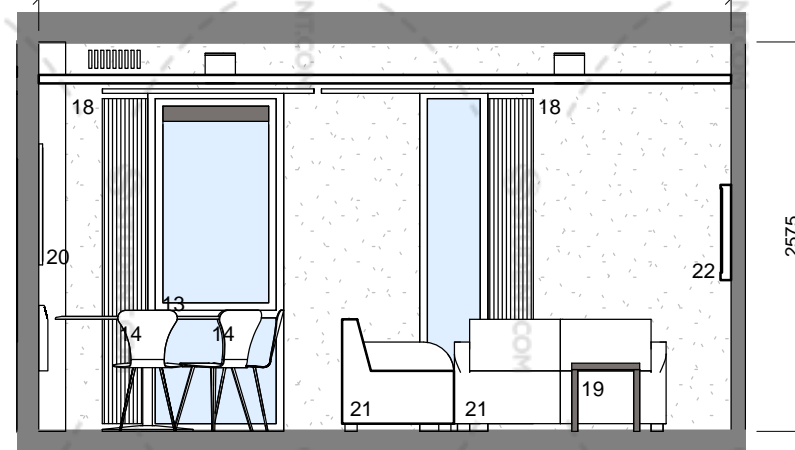
PRELIMINARY

Rev	Description	Date	By	Chk
D	Revised in accordance with Client comments, electric panel heater location shown.	14/05/14	IR	GE
C	Layout revised in line with KSHL comments, including substitution of breakfast bar and stools with dining table and chairs	29/04/14	RD	
B	Layout revised in line with KSHL comments	03/04/14	IR	GE
A	First Issue	07/03/14	RD	IR

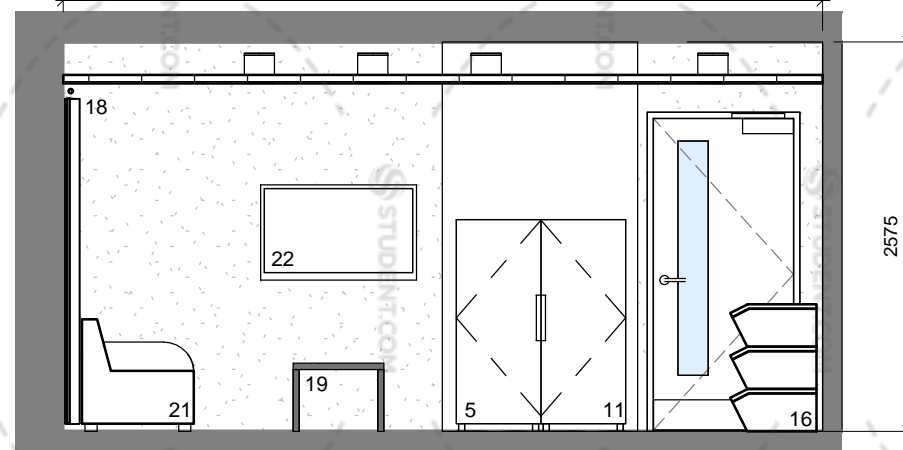


oconnell east architects
63 Newton Street, Manchester, M1 1ET
t: 0161 839 9380 f: 0161 833 1638

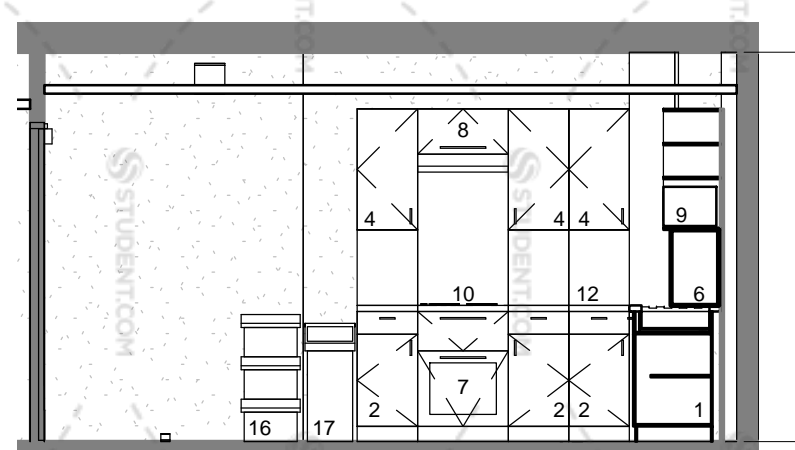
dwg title:	Kitchen Lounge Type 2 (five bed cluster)		
job title:	Ablett House for Knightsbridge Student Housing Ltd.		
scale:	1 : 50 @ A3	drawn:	IR
date:	04/03/14	job no:	1425
dwg no:	72_102	rev:	D



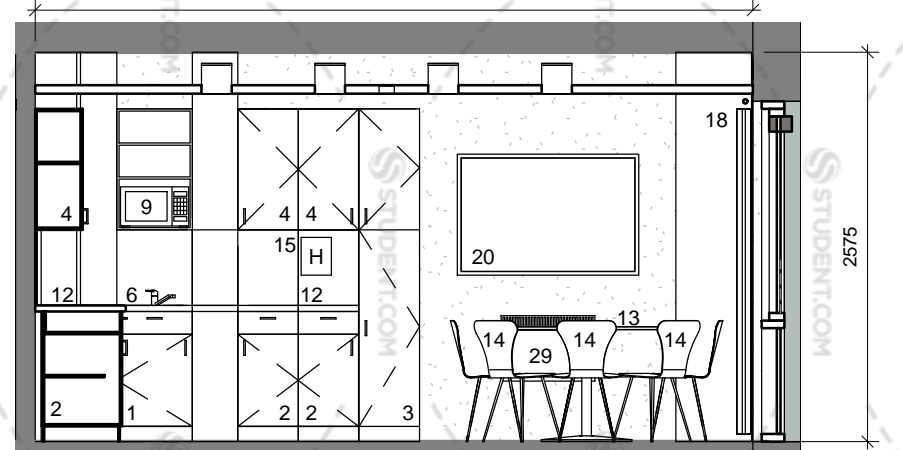
KL2 Elevation 1
1 : 50



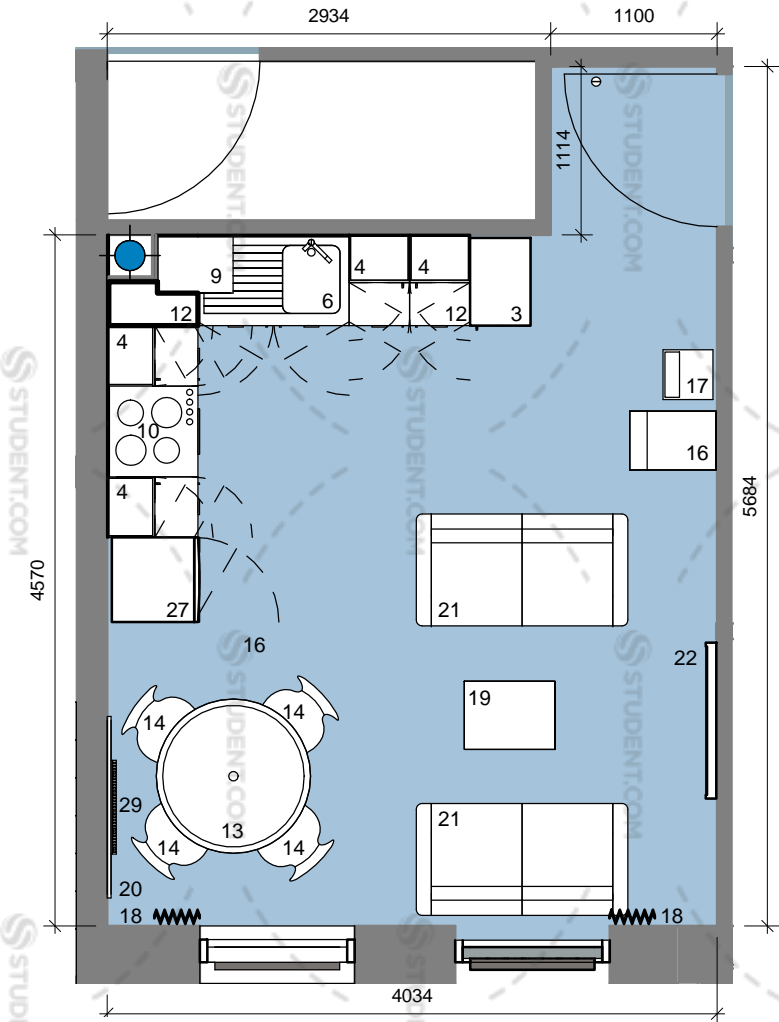
KL2 Elevation 2
1 : 50



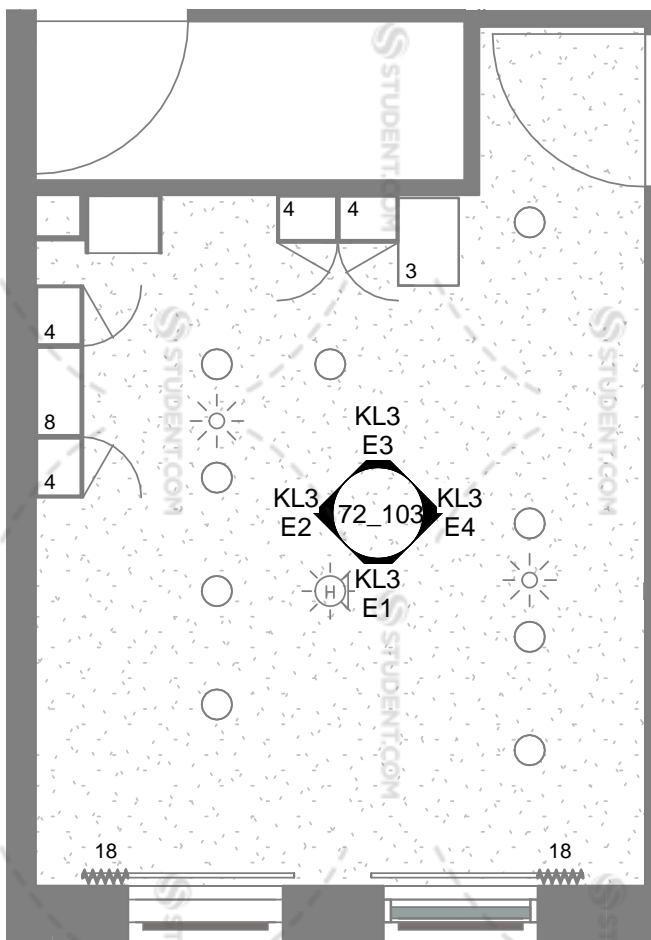
KL2 Elevation 3
1 : 50



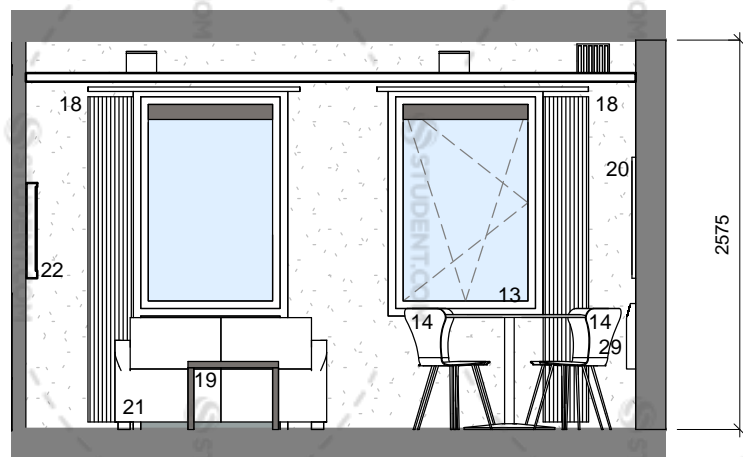
KL2 Elevation 4
1 : 50



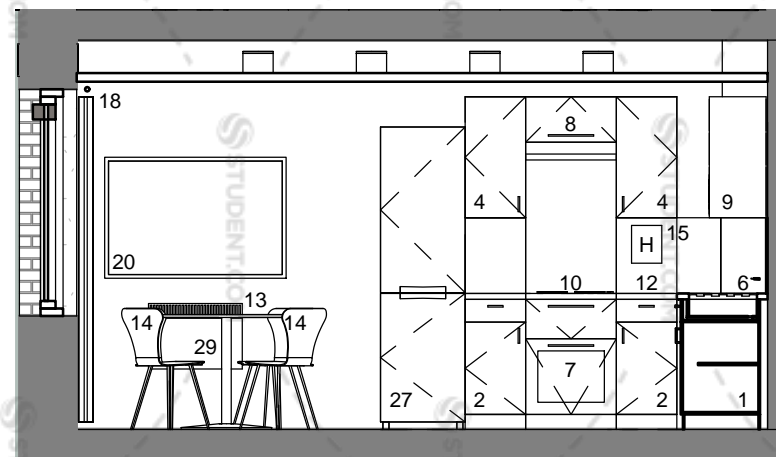
Kitchen Lounge 3 Plan
1 : 50



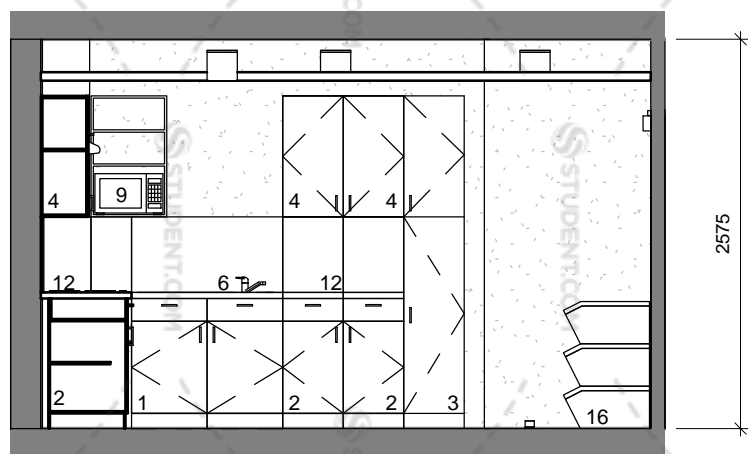
Kitchen Lounge 3 Reflected Ceiling Plan
1 : 50



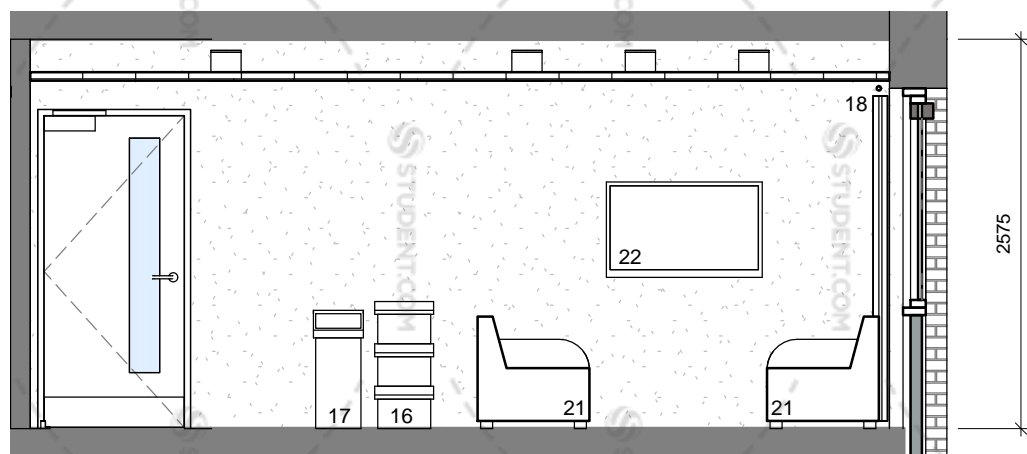
KL3 Elevation 1
1 : 50



KL3 Elevation 2
1 : 50



KL3 Elevation 3
1 : 50



KL3 Elevation 4
1 : 50

KITCHEN LOUNGE TYPE 3 NOTES

4 BED CLUSTER

Kitchen Lounge Type 3 serves a four bedroom cluster flat.

FLAT NUMBERS RELATING TO KL3:

GROUND FLOOR	-
FIRST FLOOR	11
SECOND FLOOR	18
THIRD FLOOR	25
FOURTH FLOOR	32
FIFTH FLOOR	39
SIXTH FLOOR	46
SEVENTH FLOOR	53
EIGHTH FLOOR	60
NINTH FLOOR	67
TENTH FLOOR	72
ELEVENTH FLOOR	77
TOTAL INSTANCES	11

notes:

All dimensions are in millimetres unless stated otherwise. No dimensions to be scaled from drawings. All dimensions to be checked on site prior to manufacture.

Any discrepancies between drawings and site conditions are to be reported to the contract manager.

This drawing is to be read in conjunction with all relevant Structural Engineers and Mechanical & Electrical Engineers drawings and specification.

KEY

1. Wide base cupboard - W1000mm x H860mm inc 100mm plinth, 1nr drawer and 1nr blank panel. Nr of doors as shown on drawing.
2. Base units with drawer - W400mm x H860 o/a inc 100mm plinth. 1 per student.
3. Tall Cupboard - W400mm x D600mm x H2100 plus 100mm plinth.
4. Wall cupboard - W400mm x H800mm. 1 per student.
5. Fridge - 183 Litre energy A rated, (Hotpoint or similar approved.) 6 shelves + salad drawer.
6. Sink - Stainless steel single drainer with chrome mono mixer taps.
7. Oven - Stainless steel multi function electric fan assisted single built in. Energy A rated (Hotpoint/ Ignis or similar approved)
8. Cooker hood - (Ignis or similar approved.)
9. Microwave oven - Combination Type Daewoo 800w - 20litre.
10. Hob - 4 Ring electric solid plate stainless steel (Hotpoint or similar approved.)
11. Freezer - 113 Litre energy A rated, (Hotpoint or similar approved.) 6 drawers.
12. Worktop - 40mm thick roll edge. 900mm floor to top surface with 400mm high splashback panel to match breakfast bar / worktop.
13. Dining table - 1200mm diameter for 5+ bed cluster, 1000mm diameter for 3 or 4 bed cluster.
14. Dining Chair - 1 per student.
15. Fire Blanket - 1000mm x 1000mm.
16. Recycling bin - 50lt. (nr of compartments to meet LA recycling requirements.)
17. General waste bin - 50lt.
18. Curtains and associated track - to suit window aperture as required. Evolution Eve Mocha fabric with black blackout backing.
19. Coffee table - W600 x H450 x D450 (deep profile as Magenta scheme.)
20. Pinboard - W1200 x H800mm, Camira Lucia fabric range covered. colour - TBC
21. Faux leather tub chair/ 2 seat/ 3 seat sofa mix to give 1 seat per student.
22. Wall mounted TV - 42"
23. Breakfast bar - W800mm, length as drawings, chrome legs (as required.)
24. Bar Stool - leatherette/faux leather finish with chrome base. 1 per student.
25. Accessible base unit - reduced height, on casters.
26. Accessible worktop - adjustable height. Ropox or similar.
27. Fridge Freezer - Combined
28. Cylinder cupboard (for hot water cylinder) - (preferred option to locate cylinder cupboard in cluster corridor where possible.)
29. Wall mounted electric panel heater

dwg status:

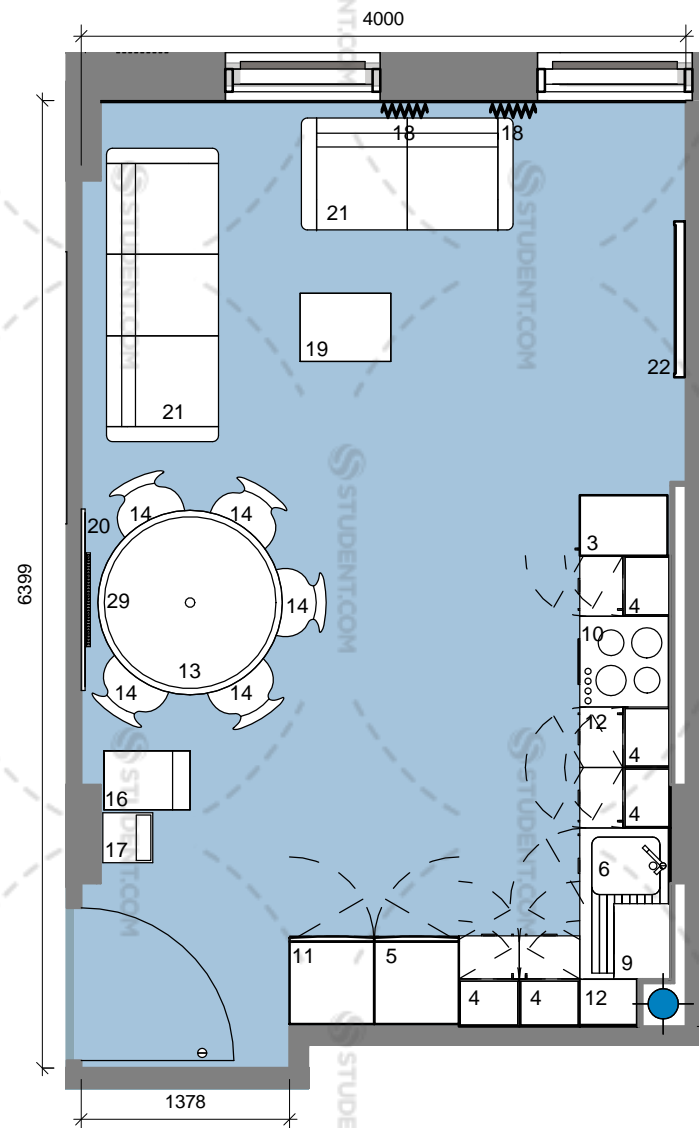
PRELIMINARY

Rev	Description	Date	By	Chk
D	Revised in accordance with Client comments, electric panel heater location shown.	14/05/14	IR	GE
C	Layout revised in line with KSHL comments, including substitution of breakfast bar and stools with dining table and chairs	29/04/14	RD	
B	Layout revised in line with KSHL comments	03/04/14	IR	GE
A	First Issue	07/03/14	RD	IR

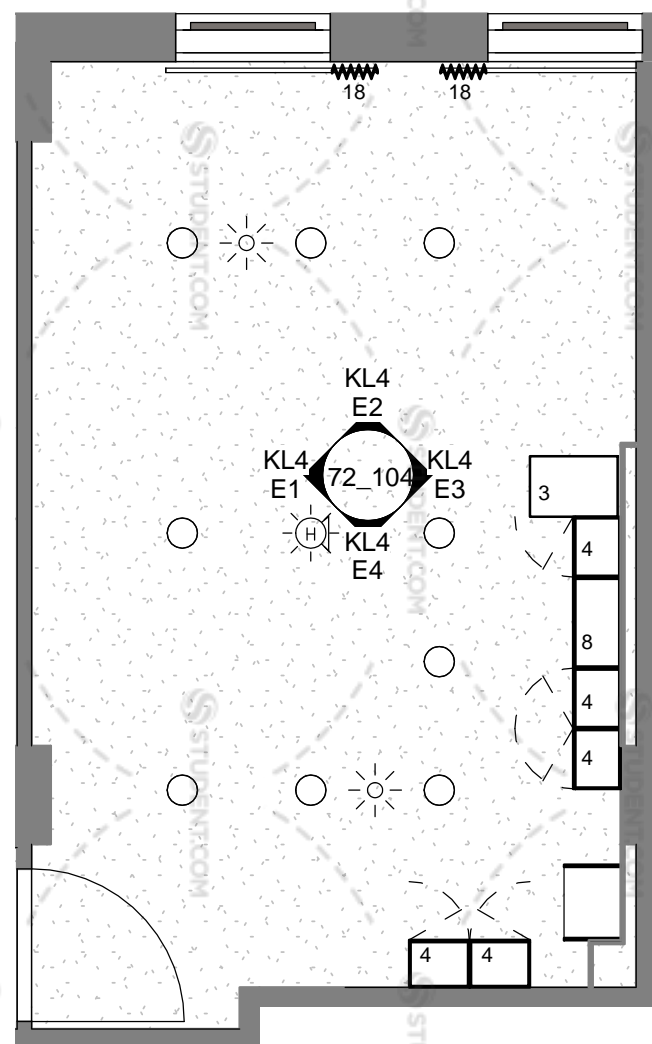


dwg title: Kitchen Lounge Type 3 (four bed cluster)

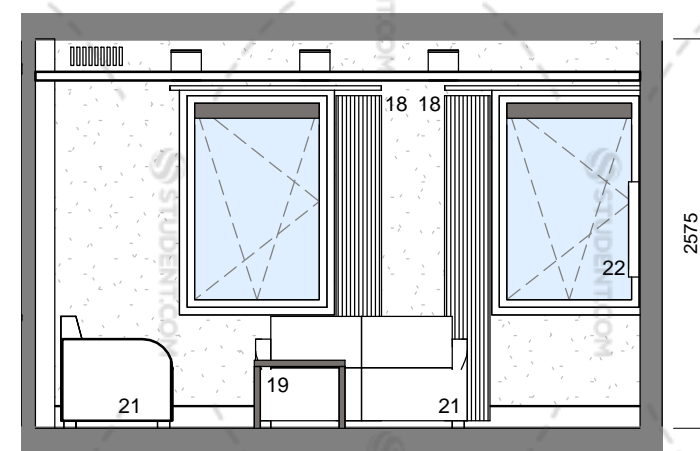
job title:	Ablett House for Knightsbridge Student Housing Ltd.		
scale:	1 : 50 @ A3	drawn:	RD
date:	04/03/14	job no:	1425
dwg no:	72_103	rev:	D



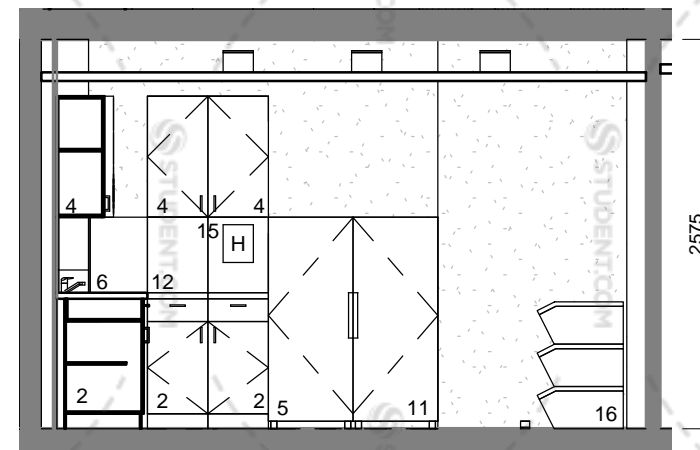
Kitchen Lounge 4 Plan
1 : 50



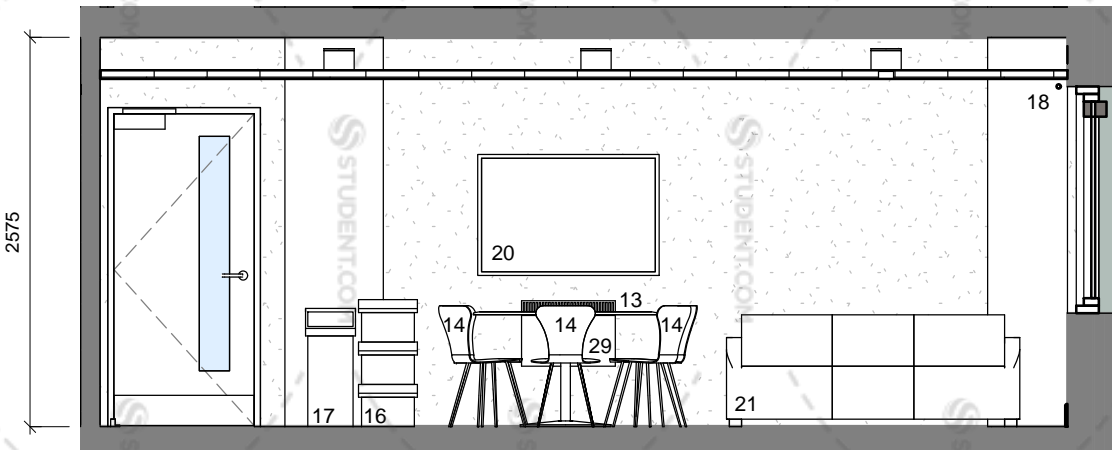
Kitchen Lounge 4 Reflected Ceiling Plan
1 : 50



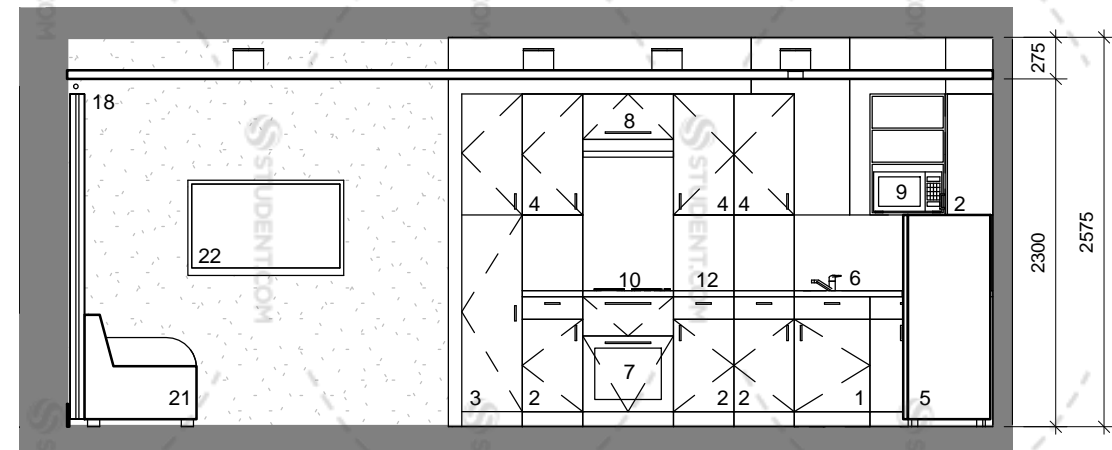
KL4 Elevation 2
1 : 50



KL4 Elevation 4
1 : 50



KL4 Elevation 1
1 : 50



KL4 Elevation 3
1 : 50

KITCHEN LOUNGE TYPE 4 NOTES

5 BED CLUSTER
Kitchen Lounge Type 4 serves a five bedroom cluster flat.

FLAT NUMBERS RELATING TO KL4:

GROUND FLOOR	7
FIRST FLOOR	14
SECOND FLOOR	21
THIRD FLOOR	28
FOURTH FLOOR	35
FIFTH FLOOR	42
SIXTH FLOOR	49
EIGHTH FLOOR	56
NINTH FLOOR	63
TENTH FLOOR	-
ELEVENTH FLOOR	-
TOTAL INSTANCES	19

notes:
All dimensions are in millimetres unless stated otherwise. No dimensions to be scaled from drawings. All dimensions to be checked on site prior to manufacture.
Any discrepancies between drawings and site conditions are to be reported to the contract manager.
This drawing is to be read in conjunction with all relevant Structural Engineers and Mechanical & Electrical Engineers drawings and specification.

- KEY
- Wide base cupboard - W1000mm x H860mm inc 100mm plinth, 1nr drawer and 1nr blank panel. Nr of doors as shown on drawing.
 - Base units with drawer - W400mm x H860 o/a inc 100mm plinth. 1 per student.
 - Tall Cupboard - W400mm x D600mm x H2100 plus 100mm plinth.
 - Wall cupboard - W400mm x H800mm. 1 per student.
 - Fridge - 183 Litre energy A rated, (Hotpoint or similar approved.) 6 shelves + salad drawer.
 - Sink - Stainless steel single drainer with chrome mono mixer taps.
 - Oven - Stainless steel multi function electric fan assisted single built in. Energy A rated (Hotpoint/ Ignis or similar approved)
 - Cooker hood - (Ignis or similar approved.)
 - Microwave oven - Combination Type Daewoo 800w - 20litre.
 - Hob - 4 Ring electric solid plate stainless steel (Hotpoint or similar approved.)
 - Freezer - 113 Litre energy A rated, (Hotpoint or similar approved.) 6 drawers.
 - Worktop - 40mm thick roll edge. 900mm floor to top surface with 400mm high splashback panel to match breakfast bar / worktop.
 - Dining table - 1200mm diameter for 5+ bed cluster, 1000mm diameter for 3 or 4 bed cluster.
 - Dining Chair - 1 per student.
 - Fire Blanket - 1000mm x 1000mm.
 - Recycling bin - 50lt. (nr of compartments to meet LA recycling requirements.)
 - General waste bin - 50lt.
 - Curtains and associated track - to suit window aperture as required. Evolution Eve Mocha fabric with black blackout backing.
 - Coffee table - W600 x H450 x D450 (deep profile as Magenta scheme.)
 - Pinboard - W1200 x H800mm, Camira Lucia fabric range covered. colour - TBC
 - Faux leather tub chair/ 2 seat/ 3 seat sofa mix to give 1 seat per student.
 - Wall mounted TV - 42"
 - Breakfast bar - W800mm, length as drawings, chrome legs (as required.)
 - Bar Stool - leatherette/faux leather finish with chrome base. 1 per student.
 - Accessible base unit - reduced height, on casters.
 - Accessible worktop - adjustable height. Ropox or similar.
 - Fridge Freezer - Combined
 - Cylinder cupboard (for hot water cylinder) - (preferred option to locate cylinder cupboard in cluster corridor where possible.)
 - Wall mounted electric panel heater

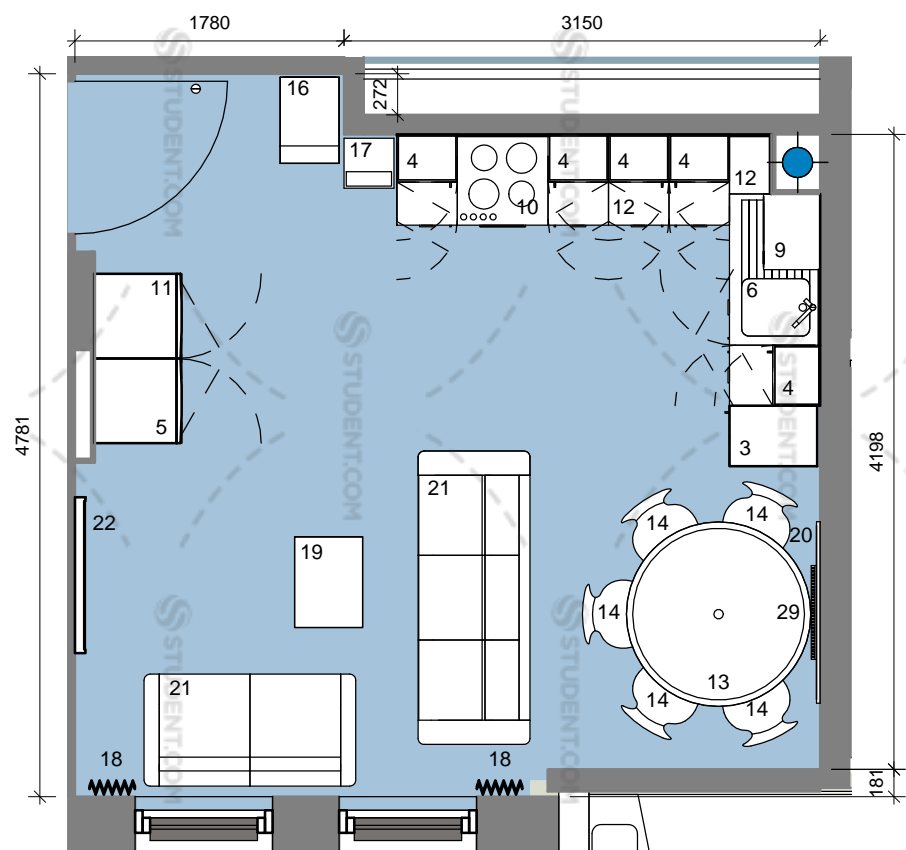
dwg status:

PRELIMINARY

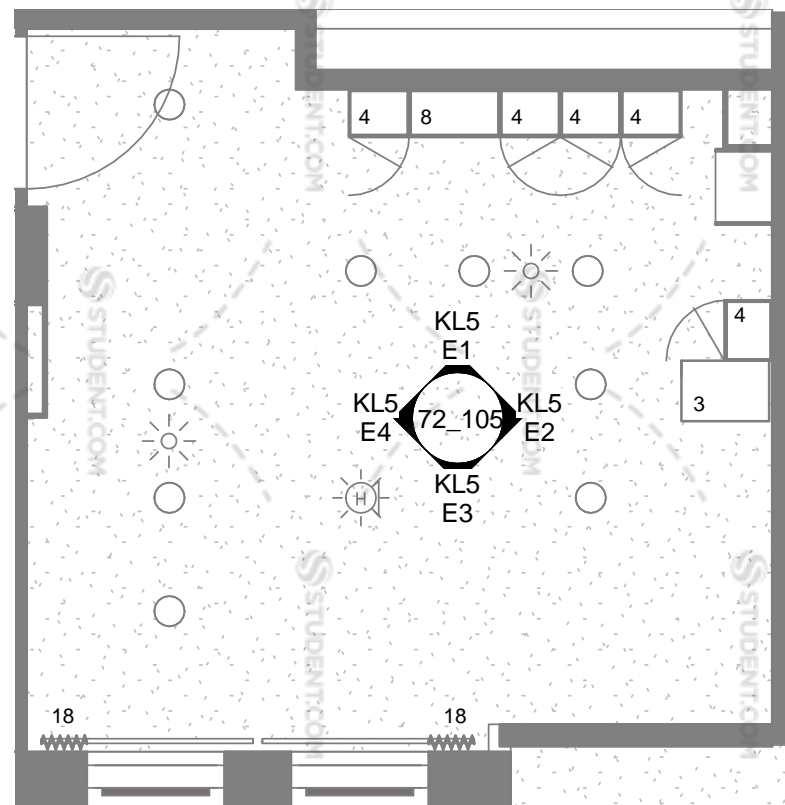
Rev	Description	Date	By	Chk
D	Revised in accordance with Client comments, electric panel heater location shown.	14/05/14	IR	GE
C	Layout revised in line with KSHL comments, including substitution of breakfast bar and stools with dining table and chairs	29/04/14	RD	
B	Layout revised in line with KSHL comments	03/04/14	IR	GE
A	First Issue	07/03/14	RD	IR



dwg title:	Kitchen Lounge Type 4 (five bed cluster)		
job title:	Ablett House for Knightsbridge Student Housing Ltd.		
scale:	1 : 50 @ A3	drawn:	RD
date:	04/03/14	job no:	1425
dwg no:	72_104	rev:	D



Kitchen Lounge 5 Plan
1 : 50



Kitchen Lounge 5 Reflected Ceiling Plan
1 : 50

KITCHEN LOUNGE TYPE 5 NOTES

5 BED CLUSTER

Kitchen Lounge Type 5 serves a five bedroom cluster flat.

FLAT NUMBERS RELATING TO KL5:

GROUND FLOOR	3
FIRST FLOOR	10
SECOND FLOOR	17
THIRD FLOOR	24
FOURTH FLOOR	31
FIFTH FLOOR	38
SIXTH FLOOR	45
SEVENTH FLOOR	52
EIGHTH FLOOR	59
NINTH FLOOR	66
TENTH FLOOR	71
ELEVENTH FLOOR	76
TOTAL INSTANCES	12

notes:
All dimensions are in millimetres unless stated otherwise. No dimensions to be scaled from drawings. All dimensions to be checked on site prior to manufacture.
Any discrepancies between drawings and site conditions are to be reported to the contract manager.
This drawing is to be read in conjunction with all relevant Structural Engineers and Mechanical & Electrical Engineers drawings and specification.

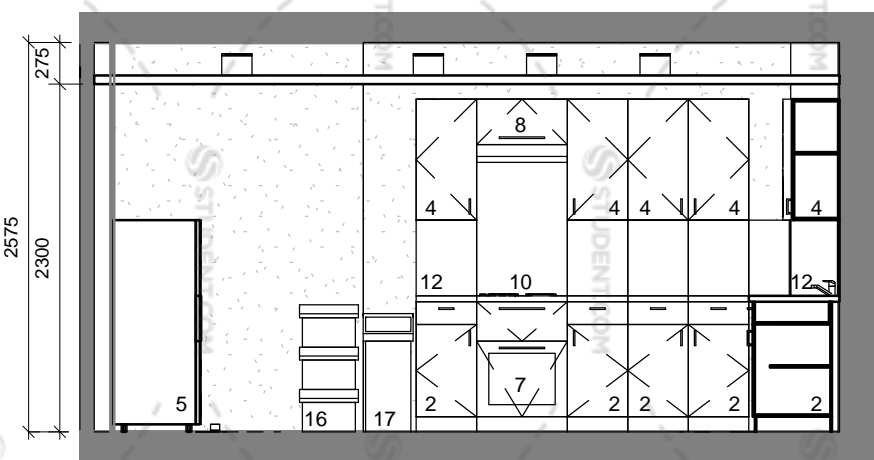
KEY

- Wide base cupboard - W1000mm x H860mm inc 100mm plinth, 1nr drawer and 1nr blank panel. Nr of doors as shown on drawing.
- Base units with drawer - W400mm x H860 o/a inc 100mm plinth, 1 per student.
- Tall Cupboard - W400mm x D600mm x H2100 plus 100mm plinth.
- Wall cupboard - W400mm x H800mm, 1 per student.
- Fridge - 183 Litre energy A rated, (Hotpoint or similar approved.) 6 shelves + salad drawer.
- Sink - Stainless steel single drainer with chrome mono mixer taps.
- Oven - Stainless steel multi function electric fan assisted single built in. Energy A rated (Hotpoint/Ignis or similar approved)
- Cooker hood - (Ignis or similar approved.)
- Microwave oven - Combination Type Daewoo 800w - 20litre.
- Hob - 4 Ring electric solid plate stainless steel (Hotpoint or similar approved.)
- Freezer - 113 Litre energy A rated, (Hotpoint or similar approved.) 6 drawers.
- Worktop - 40mm thick roll edge, 900mm floor to top surface with 400mm high splashback panel to match breakfast bar / worktop.
- Dining table - 1200mm diameter for 5+ bed cluster, 1000mm diameter for 3 or 4 bed cluster.
- Dining Chair - 1 per student.
- Fire Blanket - 1000mm x 1000mm.
- Recycling bin - 50lt. (nr of compartments to meet LA recycling requirements.)
- General waste bin - 50lt.
- Curtains and associated track - to suit window aperture as required. Evolution Eve Mocha fabric with black blackout backing.
- Coffee table - W600 x H450 x D450 (deep profile as Magenta scheme.)
- Pinboard - W1200 x H800mm, Camira Lucia fabric range covered, colour - TBC
- Faux leather tub chair/ 2 seat/ 3 seat sofa mix to give 1 seat per student.
- Wall mounted TV - 42"
- Breakfast bar - W800mm, length as drawings, chrome legs (as required.)
- Bar Stool - leatherette/faux leather finish with chrome base. 1 per student.
- Accessible base unit - reduced height, on casters.
- Accessible worktop - adjustable height. Ropox or similar.
- Fridge Freezer - Combined
- Cylinder cupboard (for hot water cylinder) - (preferred option to locate cylinder cupboard in cluster corridor where possible.)
- Wall mounted electric panel heater

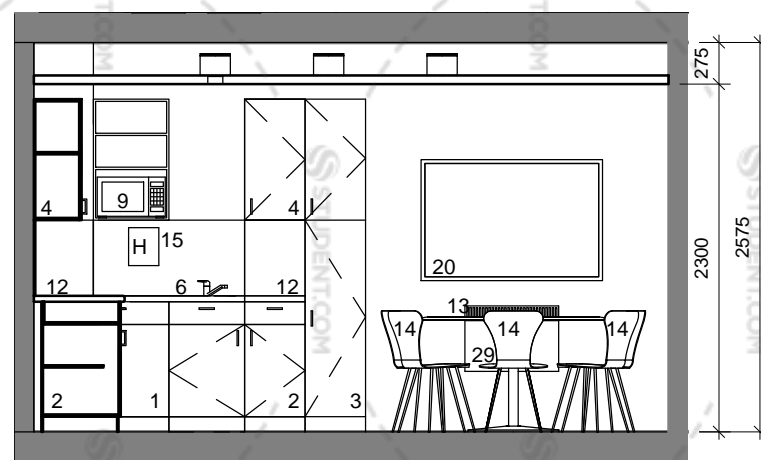
dwg status:

PRELIMINARY

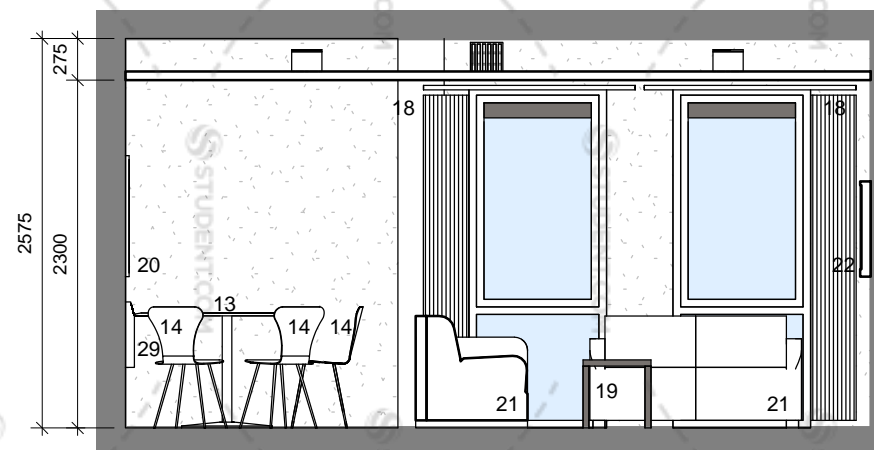
Rev	Description	Date	By	Chk
D	Revised in accordance with Client comments, electric panel heater location shown.	14/05/14	IR	GE
C	Layout revised in line with KSHL comments, including substitution of breakfast bar and stools with dining table and chairs	29/04/14	RD	
B	Layout revised in line with KSHL comments	03/04/14	IR	GE
A	First Issue	07/03/14	RD	IR



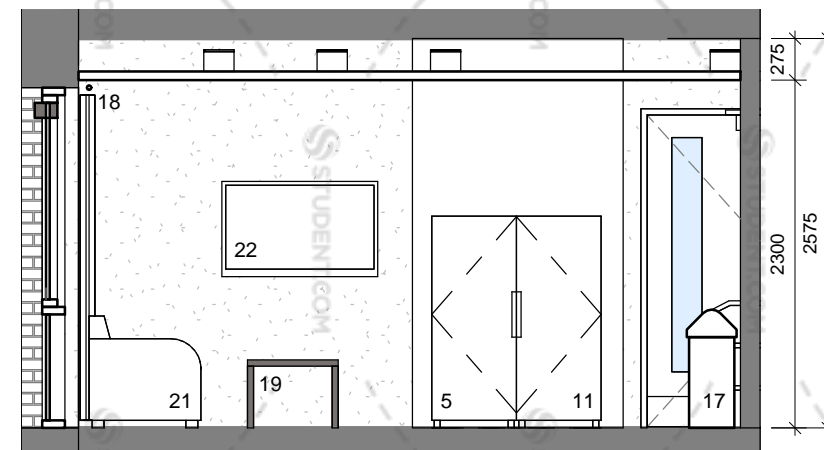
KL5 Elevation 1
1 : 50



KL5 Elevation 2
1 : 50



KL5 Elevation 3
1 : 50



KL5 Elevation 4
1 : 50



dwg title:	Kitchen Lounge Type 5 (five bed cluster)		
job title:	Ablett House for Knightsbridge Student Housing Ltd.		
scale:	1 : 50 @ A3	drawn:	RD
date:	04/03/14	job no:	1425
dwg no:	72_105	rev:	D

notes:
 All dimensions are in millimetres unless stated otherwise. No dimensions to be scaled from drawings. All dimensions to be checked on site prior to manufacture.
 Any discrepancies between drawings and site conditions are to be reported to the contract manager.
 This drawing is to be read in conjunction with all relevant Structural Engineers and Mechanical & Electrical Engineers drawings and specification.

- KEY
- Wide base cupboard - W1000mm x H860mm inc 100mm plinth, 1nr drawer and 1nr blank panel. Nr of doors as shown on drawing.
 - Base units with drawer - W400mm x H860 o/a inc 100mm plinth, 1 per student.
 - Tall Cupboard - W400mm x D600mm x H2100 plus 100mm plinth.
 - Wall cupboard - W400mm x H800mm, 1 per student.
 - Fridge - 183 Litre energy A rated, (Hotpoint or similar approved.) 6 shelves + salad drawer.
 - Sink - Stainless steel single drainer with chrome mono mixer taps.
 - Oven - Stainless steel multi function electric fan assisted single built in. Energy A rated (Hotpoint/ Ignis or similar approved)
 - Cooker hood - (Ignis or similar approved.)
 - Microwave oven - Combination Type Daewoo 800w – 20litre.
 - Hob - 4 Ring electric solid plate stainless steel (Hotpoint or similar approved.)
 - Freezer - 113 Litre energy A rated, (Hotpoint or similar approved.) 6 drawers.
 - Worktop - 40mm thick roll edge, 900mm floor to top surface with 400mm high splashback panel to match breakfast bar / worktop.
 - Dining table - 1200mm diameter for 5+ bed cluster, 1000mm diameter for 3 or 4 bed cluster.
 - Dining Chair - 1 per student.
 - Fire Blanket - 1000mm x 1000mm.
 - Recycling bin - 50lt. (nr of compartments to meet LA recycling requirements.)
 - General waste bin - 50lt.
 - Curtains and associated track - to suit window aperture as required. Evolution Eve Mocha fabric with black blackout backing.
 - Coffee table - W600 x H450 x D450 (deep profile as Magenta scheme.)
 - Pinboard - W1200 x H800mm, Camira Lucia fabric range covered, colour - TBC
 - Faux leather tub chair/ 2 seat/ 3 seat sofa mix to give 1 seat per student.
 - Wall mounted TV - 42"
 - Breakfast bar - W800mm, length as drawings, chrome legs (as required.)
 - Bar Stool - leatherette/faux leather finish with chrome base. 1 per student.
 - Accessible base unit - reduced height, on casters.
 - Accessible worktop - adjustable height. Ropox or similar.
 - Fridge Freezer - Combined
 - Cylinder cupboard (for hot water cylinder) - (preferred option to locate cylinder cupboard in cluster corridor where possible.)
 - Wall mounted electric panel heater

dwg status:

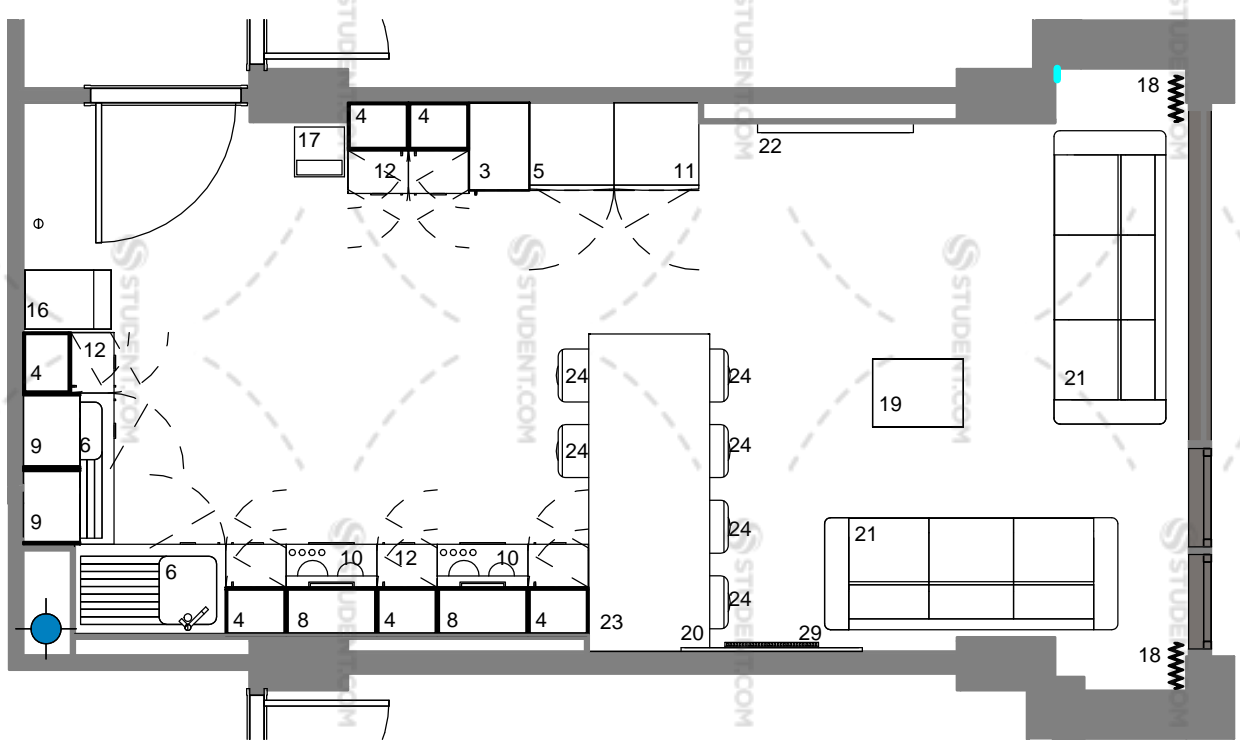
PRELIMINARY

Rev	Description	Date	By	Chk
D	Revised in accordance with Client comments, electric panel heater location shown.	14/05/14	IR	GE
C	Layout revised in line with KSHL comments, including substitution of breakfast bar and stools with dining table and chairs	29/04/14	RD	
B	Layout revised in line with KSHL comments	03/04/14	IR	GE
A	First Issue	07/03/14	RD	IR

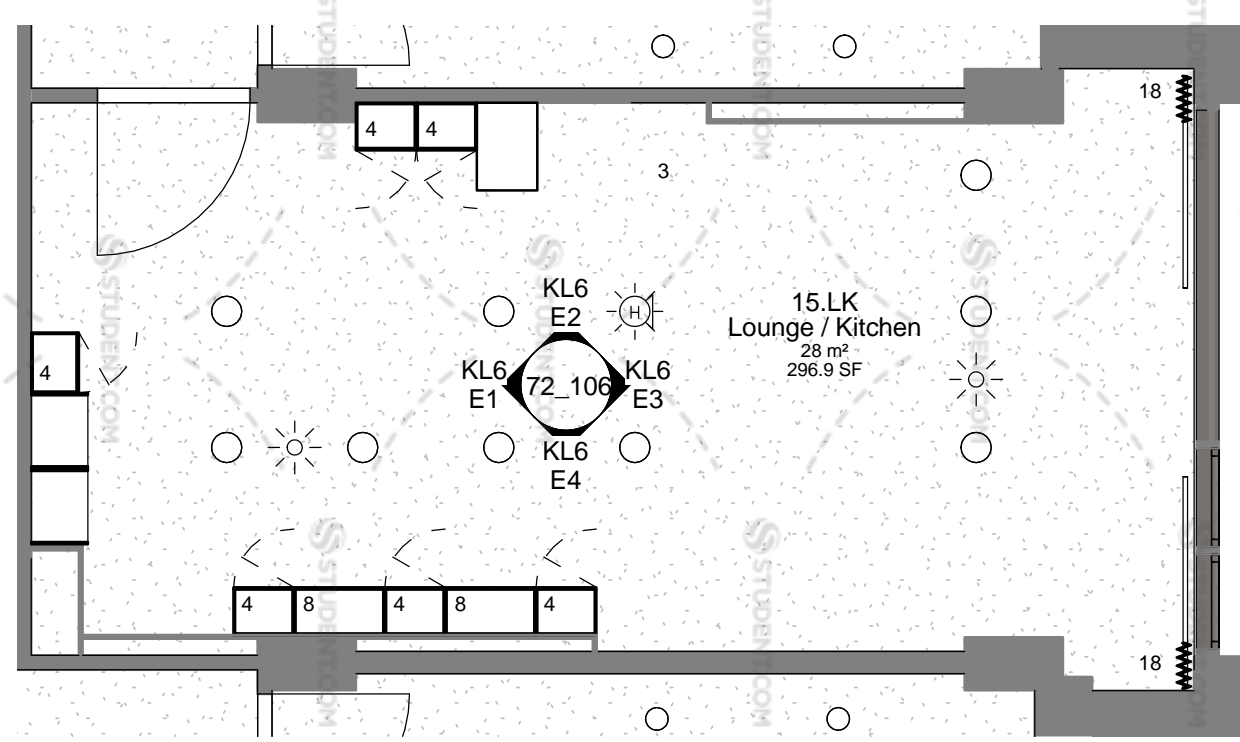


oea
 oconnell east architects
 63 Newton Street, Manchester, M1 1ET
 t: 0161 839 9380 f: 0161 833 1638

dwg title:	Kitchen Lounge Type 6 (six bed cluster)		
job title:	Ablett House for Knightsbridge Student Housing Ltd.		
scale:	1 : 50 @ A3	drawn:	RD
date:	04/03/14	job no:	1425
dwg no:	72_106	rev:	D



Kitchen Lounge 6 Plan
1 : 50



Kitchen Lounge 6 Reflected Ceiling Plan
1 : 50

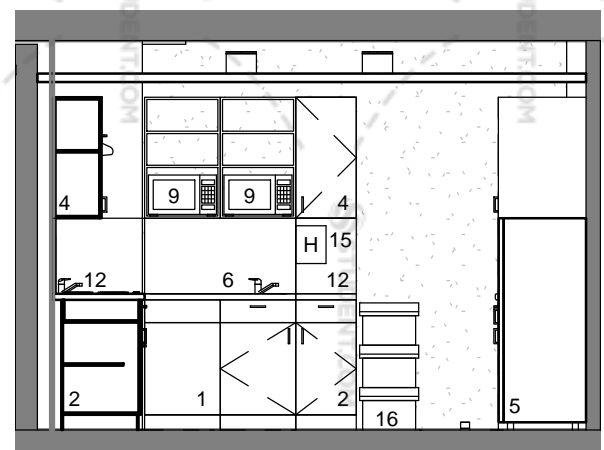
15.LK Lounge / Kitchen
28 m²
296.9 SF

KITCHEN LOUNGE TYPE 6 NOTES

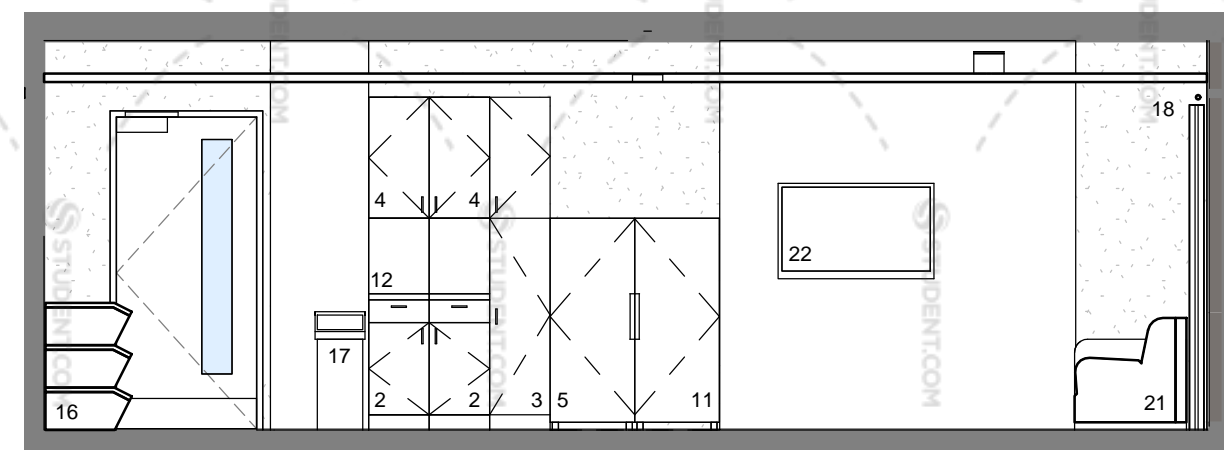
6 BED CLUSTER
 Kitchen Lounge Type 6 serves a six bedroom cluster flat that includes one premium bedroom.

FLAT NUMBERS RELATING TO KL6:

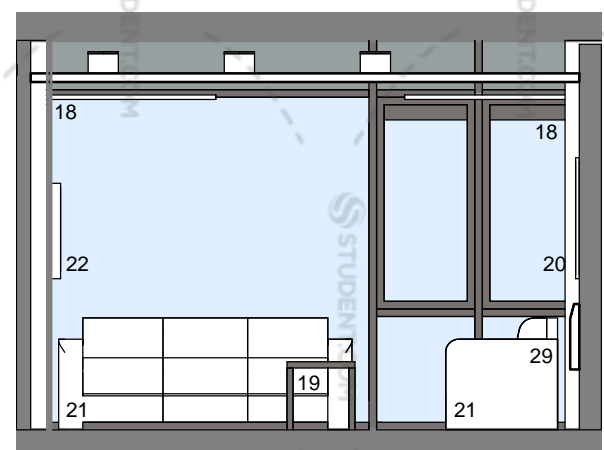
GROUND FLOOR	-
FIRST FLOOR	-
SECOND FLOOR	15
THIRD FLOOR	22
FOURTH FLOOR	29
FIFTH FLOOR	36
SIXTH FLOOR	43
SEVENTH FLOOR	50
EIGHTH FLOOR	57
NINTH FLOOR	64
TENTH FLOOR	-
ELEVENTH FLOOR	-
TOTAL INSTANCES	8



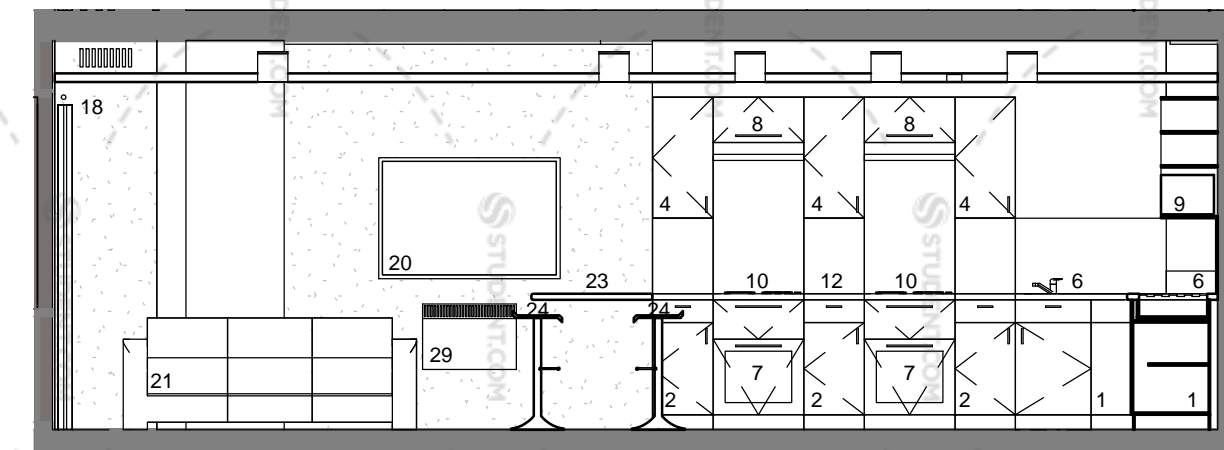
KL6 Elevation 1
1 : 50



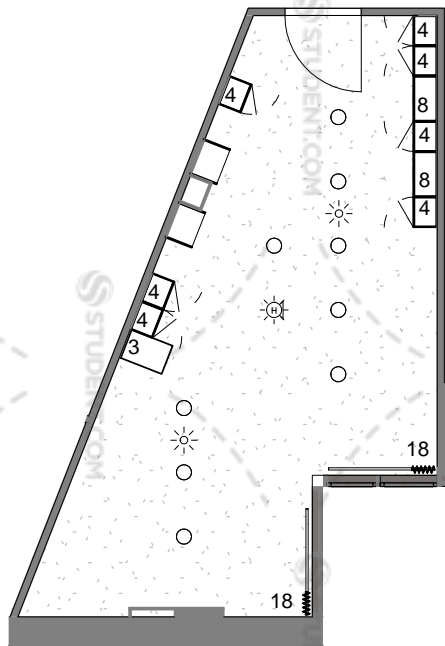
KL6 Elevation 2
1 : 50



KL6 Elevation 3
1 : 50



KL6 Elevation 4
1 : 50



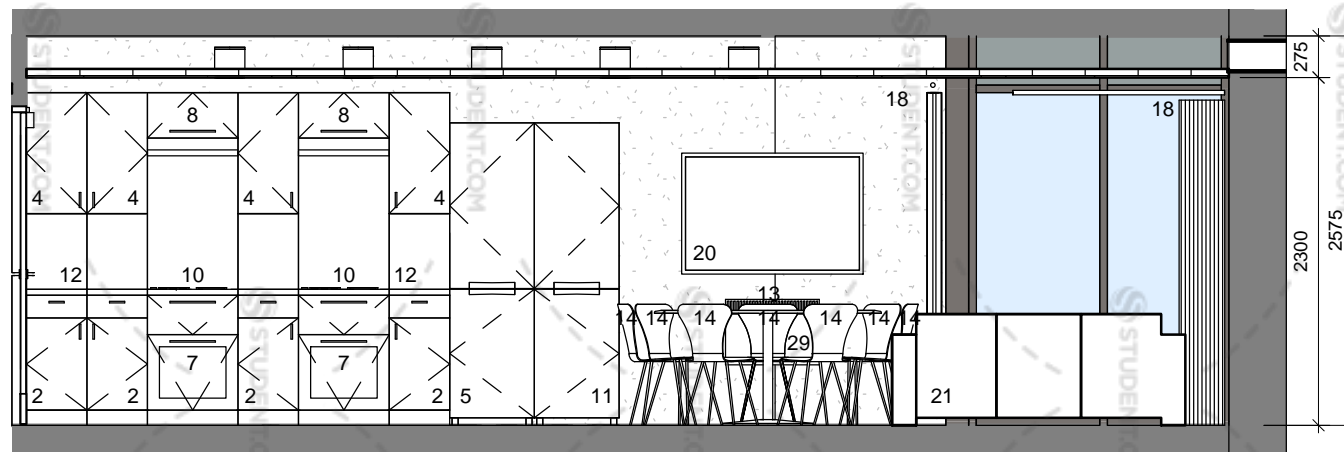
Kitchen Lounge 7 Reflected Ceiling Plan
1 : 100

KITCHEN LOUNGE TYPE 7 NOTES

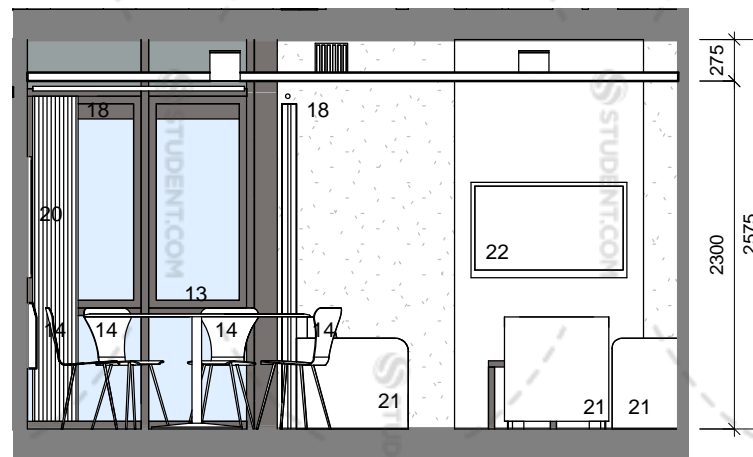
7 BED CLUSTER
Kitchen Lounge Type 7 serves a seven bedroom cluster flat.

FLAT NUMBERS RELATING TO KL7:

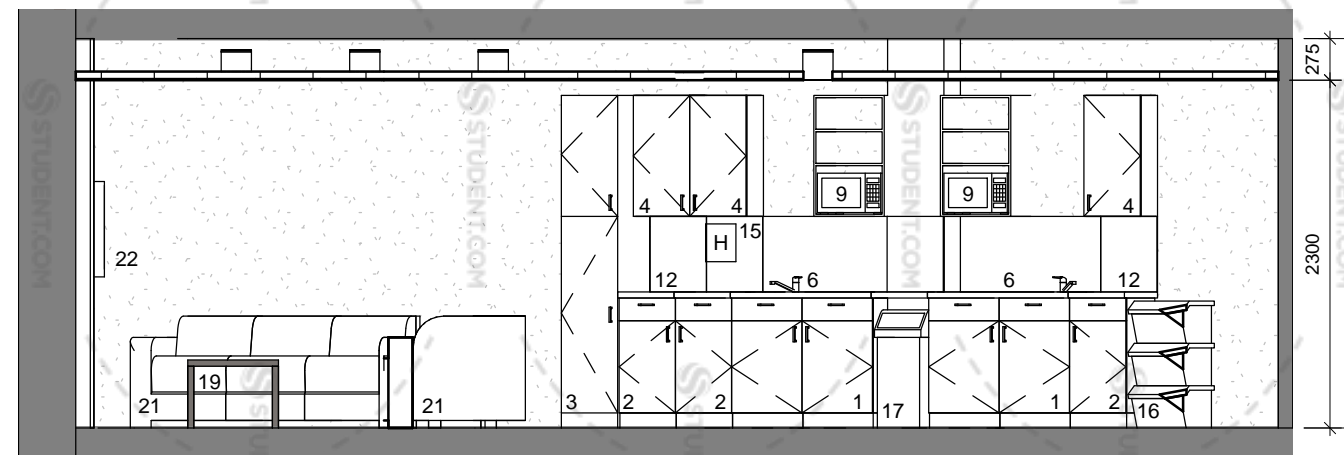
GROUND FLOOR	2
FIRST FLOOR	9
SECOND FLOOR	16
THIRD FLOOR	23
FOURTH FLOOR	30
FIFTH FLOOR	37
SIXTH FLOOR	44
SEVENTH FLOOR	51
EIGHTH FLOOR	58
NINTH FLOOR	65
TENTH FLOOR	-
ELEVENTH FLOOR	-
TOTAL INSTANCES	10



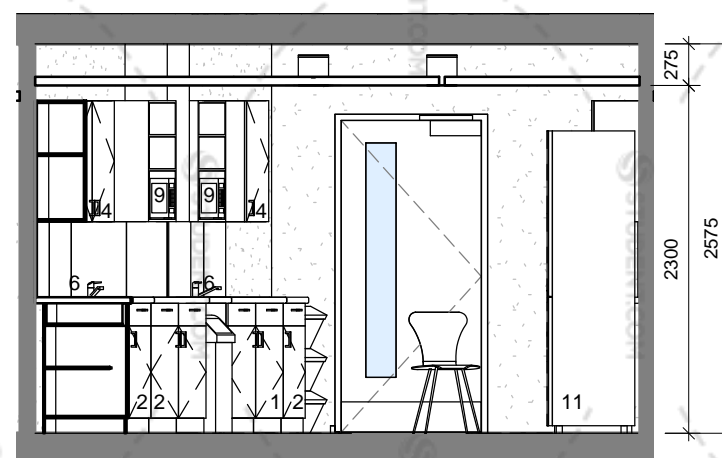
KL7 Elevation 1
1 : 50



KL7 Elevation 2
1 : 50



KL7 Elevation 3
1 : 50



KL7 Elevation 4
1 : 50

notes:

All dimensions are in millimetres unless stated otherwise. No dimensions to be scaled from drawings. All dimensions to be checked on site prior to manufacture.
Any discrepancies between drawings and site conditions are to be reported to the contract manager.
This drawing is to be read in conjunction with all relevant Structural Engineers and Mechanical & Electrical Engineers drawings and specification.

KEY

- Wide base cupboard - W1000mm x H860mm inc 100mm plinth, 1nr drawer and 1nr blank panel. Nr of doors as shown on drawing.
- Base units with drawer - W400mm x H860 o/a inc 100mm plinth, 1 per student.
- Tall Cupboard - W400mm x D600mm x H2100 plus 100mm plinth.
- Wall cupboard - W400mm x H800mm, 1 per student.
- Fridge - 183 Litre energy A rated, (Hotpoint or similar approved,) 6 shelves + salad drawer.
- Sink - Stainless steel single drainer with chrome mono mixer taps.
- Oven - Stainless steel multi function electric fan assisted single built in. Energy A rated (Hotpoint/ Ignis or similar approved)
- Cooker hood - (Ignis or similar approved.)
- Microwave oven - Combination Type Daewoo 800w - 20litre.
- Hob - 4 Ring electric solid plate stainless steel (Hotpoint or similar approved.)
- Freezer - 113 Litre energy A rated, (Hotpoint or similar approved.) 6 drawers.
- Worktop - 40mm thick roll edge, 900mm floor to top surface with 400mm high splashback panel to match breakfast bar / worktop.
- Dining table - 1200mm diameter for 5+ bed cluster, 1000mm diameter for 3 or 4 bed cluster.
- Dining Chair - 1 per student.
- Fire Blanket - 1000mm x 1000mm.
- Recycling bin - 50lt. (nr of compartments to meet LA recycling requirements.)
- General waste bin - 50lt.
- Curtains and associated track - to suit window aperture as required. Evolution Eve Mocha fabric with black blackout backing.
- Coffee table - W600 x H450 x D450 (deep profile as Magenta scheme.)
- Pinboard - W1200 x H800mm, Camira Lucia fabric range covered, colour - TBC
- Faux leather tub chair/ 2 seat/ 3 seat sofa mix to give 1 seat per student.
- Wall mounted TV - 42"
- Breakfast bar - W800mm, length as drawings, chrome legs (as required.)
- Bar Stool - leatherette/faux leather finish with chrome base. 1 per student.
- Accessible base unit - reduced height, on casters.
- Accessible worktop - adjustable height. Ropox or similar.
- Fridge Freezer - Combined
- Cylinder cupboard (for hot water cylinder) - (preferred option to locate cylinder cupboard in cluster corridor where possible.)
- Wall mounted electric panel heater

dwg status:

PRELIMINARY

Rev	Description	Date	By	Chk
E	Revised in accordance with Client comments, electric panel heater location shown.	14/05/14	IR	GE
D	Layout revised in line with KSHL comments, including substitution of breakfast bar and stools with dining table and chairs	29/04/14	RD	
C	Revised to correct room layout	09/04/14	IR	GE
B	Layout revised in line with KSHL comments	03/04/14	IR	GE
A	First Issue	07/03/14	RD	IR



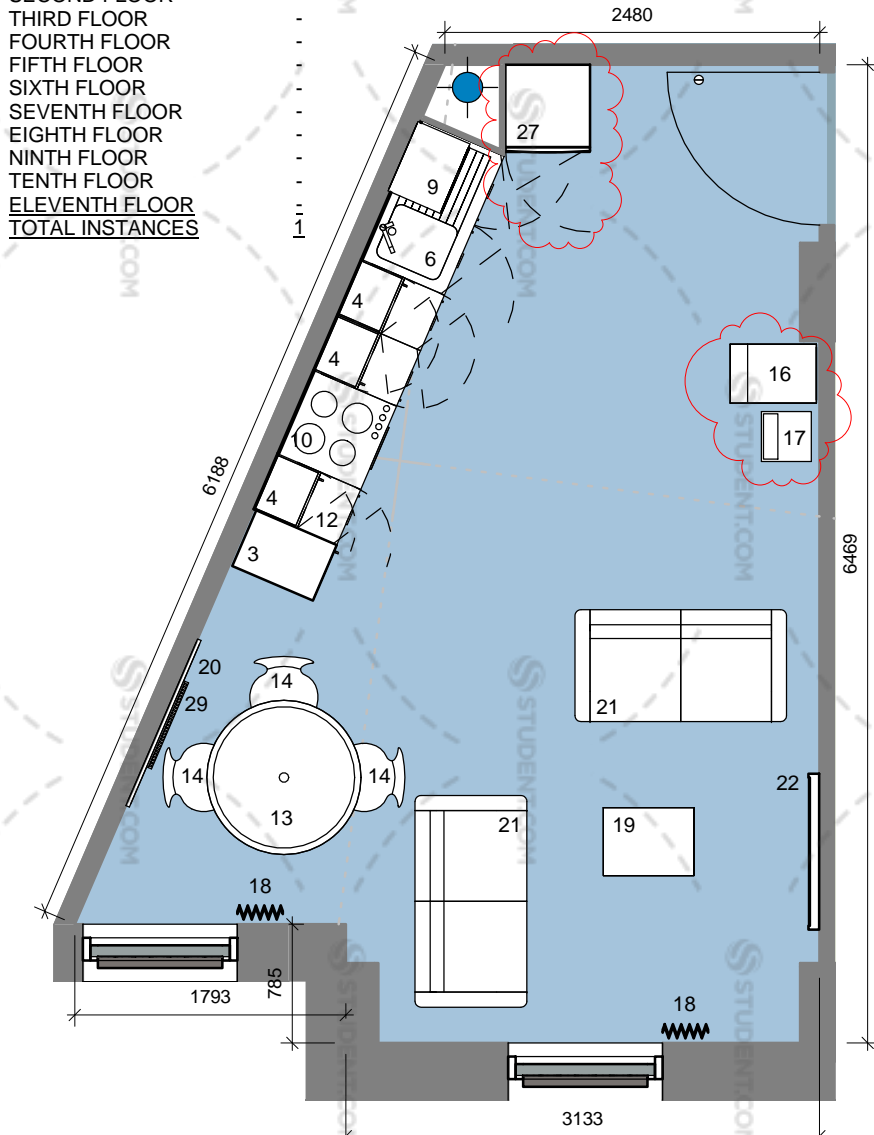
dwg title:	Kitchen Lounge Type 7 (seven bed cluster)		
job title:	Ablett House for Knightsbridge Student Housing Ltd.		
scale:	As indicated A3	drawn:	RD
date:	04/03/14	job no:	1425
dwg no:	72_107	rev:	E

KITCHEN LOUNGE TYPE 8 NOTES

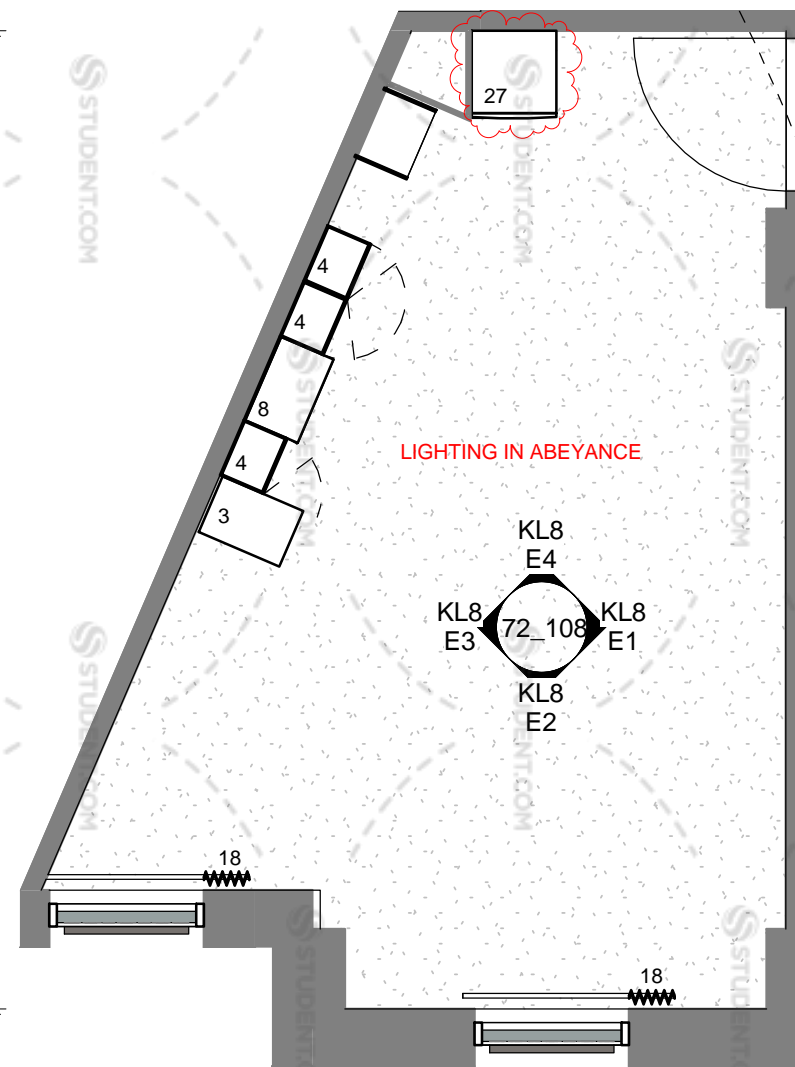
3 BED CLUSTER
 Kitchen Lounge Type 8 serves a three bedroom cluster flat.

FLAT NUMBERS RELATING TO KL8:

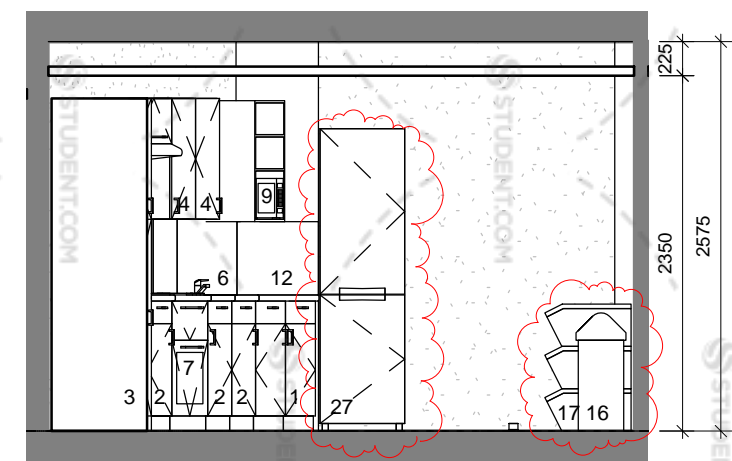
- GROUND FLOOR 4
- FIRST FLOOR -
- SECOND FLOOR -
- THIRD FLOOR -
- FOURTH FLOOR -
- FIFTH FLOOR -
- SIXTH FLOOR -
- SEVENTH FLOOR -
- EIGHTH FLOOR -
- NINTH FLOOR -
- TENTH FLOOR -
- ELEVENTH FLOOR -
- TOTAL INSTANCES 1



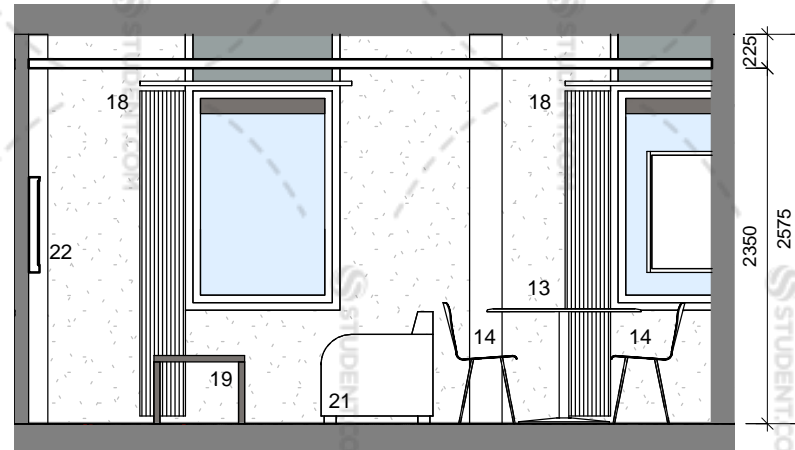
Kitchen Lounge 8 Plan
1 : 50



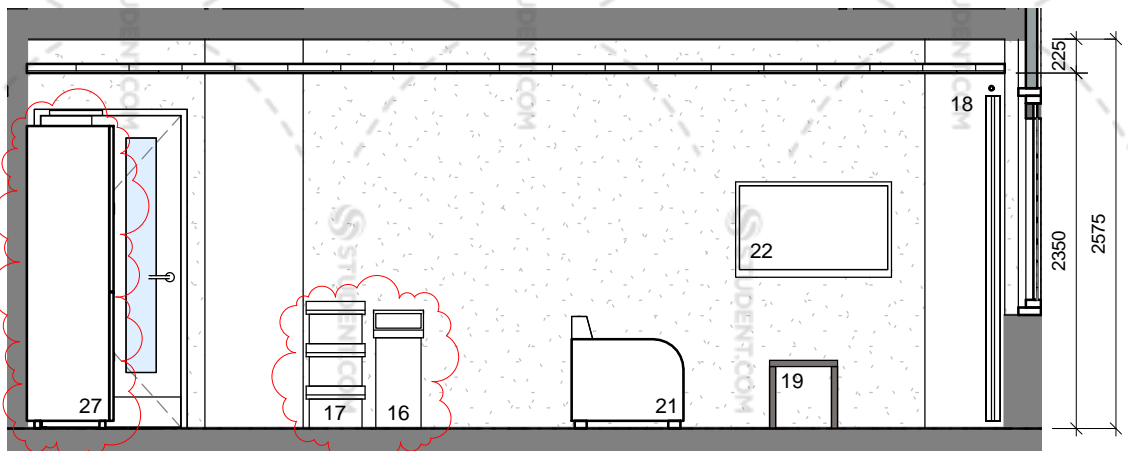
Kitchen Lounge 8 Reflected Ceiling Plan
1 : 50



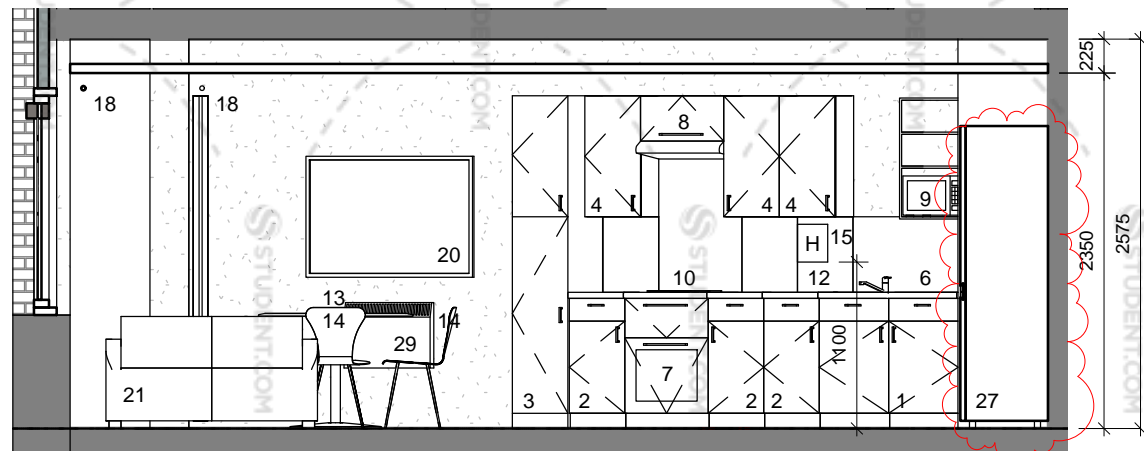
KL8 Elevation 4
1 : 50



KL8 Elevation 2
1 : 50



KL8 Elevation 1
1 : 50



KL8 Elevation 3
1 : 50

notes:
 All dimensions are in millimetres unless stated otherwise. No dimensions to be scaled from drawings. All dimensions to be checked on site prior to manufacture.
 Any discrepancies between drawings and site conditions are to be reported to the contract manager.
 This drawing is to be read in conjunction with all relevant Structural Engineers and Mechanical & Electrical Engineers drawings and specification.

- KEY**
1. Wide base cupboard - W1000mm x H860mm inc 100mm plinth, 1nr drawer and 1nr blank panel. Nr of doors as shown on drawing.
 2. Base units with drawer - W400mm x H860 o/a inc 100mm plinth, 1 per student.
 3. Tall Cupboard - W400mm x D600mm x H2100 plus 100mm plinth.
 4. Wall cupboard - W400mm x H800mm, 1 per student.
 5. Fridge - 183 Litre energy A rated, (Hotpoint or similar approved,) 6 shelves + salad drawer.
 6. Sink - Stainless steel single drainer with chrome mono mixer taps.
 7. Oven - Stainless steel multi function electric fan assisted single built in. Energy A rated (Hotpoint/ Ignis or similar approved)
 8. Cooker hood - (Ignis or similar approved.)
 9. Microwave oven - Combination Type Daewoo 800w - 20litre.
 10. Hob - 4 Ring electric solid plate stainless steel (Hotpoint or similar approved.)
 11. Freezer - 113 Litre energy A rated, (Hotpoint or similar approved.) 6 drawers.
 12. Worktop - 40mm thick roll edge, 900mm floor to top surface with 400mm high splashback panel to match breakfast bar / worktop.
 13. Dining table - 1200mm diameter for 5+ bed cluster, 1000mm diameter for 3 or 4 bed cluster.
 14. Dining Chair - 1 per student.
 15. Fire Blanket - 1000mm x 1000mm.
 16. Recycling bin - 50lt. (nr of compartments to meet LA recycling requirements.)
 17. General waste bin - 50lt.
 18. Curtains and associated track - to suit window aperture as required. Evolution Eve Mocha fabric with black blackout backing.
 19. Coffee table - W600 x H450 x D450 (deep profile as Magenta scheme.)
 20. Pinboard - W1200 x H800mm, Camira Lucia fabric range covered, colour - TBC
 21. Faux leather tub chair/ 2 seat/ 3 seat sofa mix to give 1 seat per student.
 22. Wall mounted TV - 42"
 23. Breakfast bar - W800mm, length as drawings, chrome legs (as required.)
 24. Bar Stool - leatherette/faux leather finish with chrome base. 1 per student.
 25. Accessible base unit - reduced height, on casters.
 26. Accessible worktop - adjustable height. Ropox or similar.
 27. Fridge Freezer - Combined
 28. Cylinder cupboard (for hot water cylinder) - (preferred option to locate cylinder cupboard in cluster corridor where possible.)
 29. Wall mounted electric panel heater

dwg status: **PRELIMINARY**

Rev	Description	Date	By	Chk
E	Fridge freezer and bins swapped	16/05/14	IR	GE
D	Revised in accordance with Client comments, electric panel heater location shown.	14/05/14	IR	GE
C	Layout revised in line with KSHL comments, including substitution of breakfast bar and stools with dining table and chairs	29/04/14	RD	
B	Layout revised in line with KSHL comments	03/04/14	IR	GE
A	First Issue	07/03/14	RD	IR



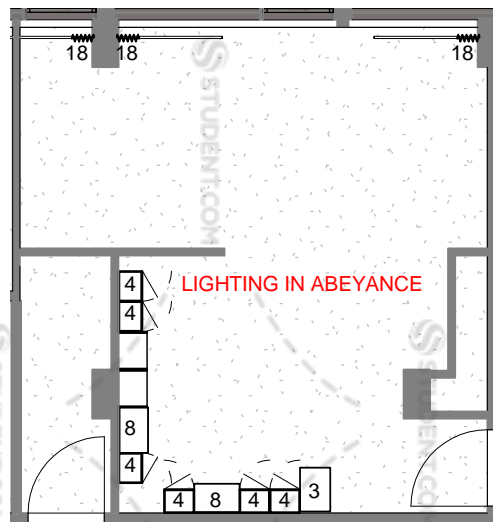
oea
 oconnell east architects
 63 Newton Street, Manchester, M1 1ET
 t: 0161 839 9380 f: 0161 833 1638

dwg title:	Kitchen Lounge Type 8 (three bed cluster) Date 1		
job title:	Ablett House for Knightsbridge Student Housing Ltd.		
scale:	1 : 50 @ A3	drawn:	RD
date:	04/03/14	job no:	1425
dwg no:	72_108	rev:	E

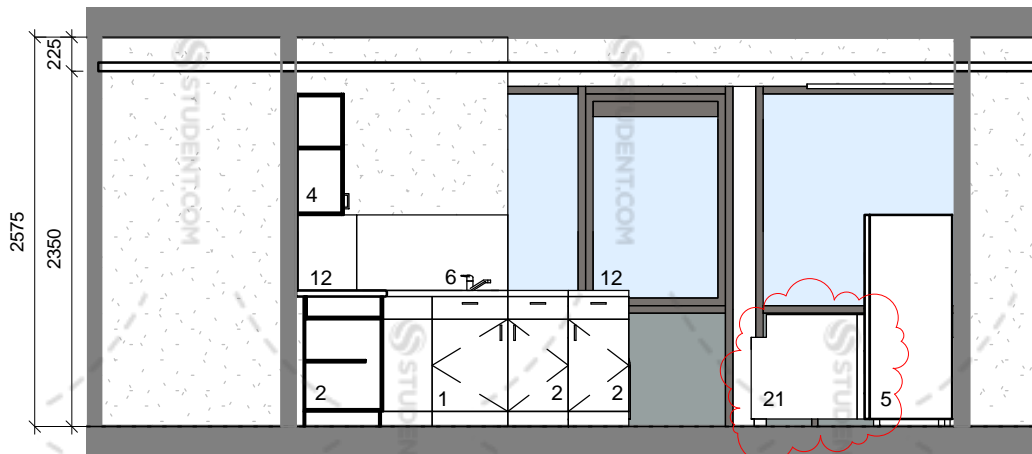
KITCHEN LOUNGE TYPE 9 NOTES

6 BED CLUSTER
 Kitchen Lounge Type 9 serves a six bedroom cluster flat that includes three premium bedrooms.

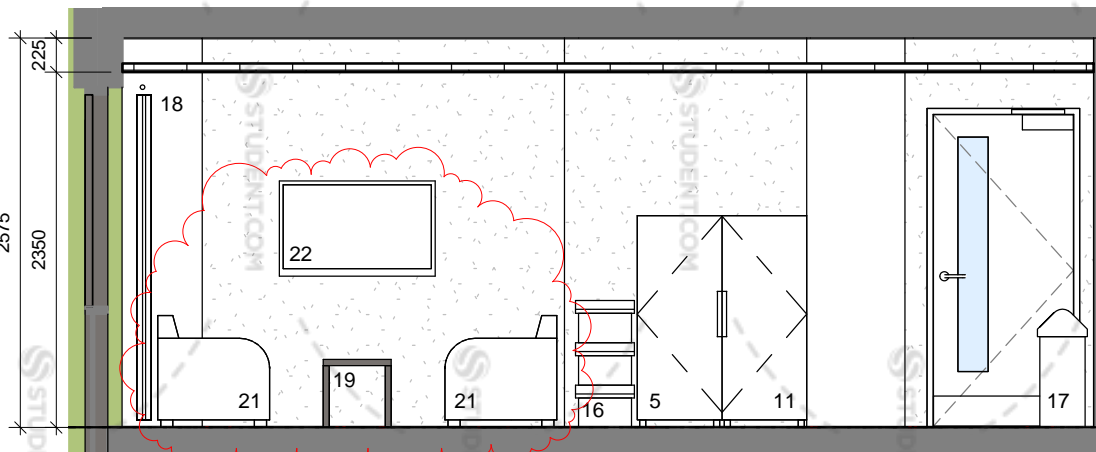
- FLAT NUMBERS RELATING TO KL9:**
 GROUND FLOOR 1
 FIRST FLOOR -
 SECOND FLOOR -
 THIRD FLOOR -
 FOURTH FLOOR -
 FIFTH FLOOR -
 SIXTH FLOOR -
 SEVENTH FLOOR -
 EIGHTH FLOOR -
 NINTH FLOOR -
 TENTH FLOOR -
 ELEVENTH FLOOR -
 TOTAL INSTANCES 1



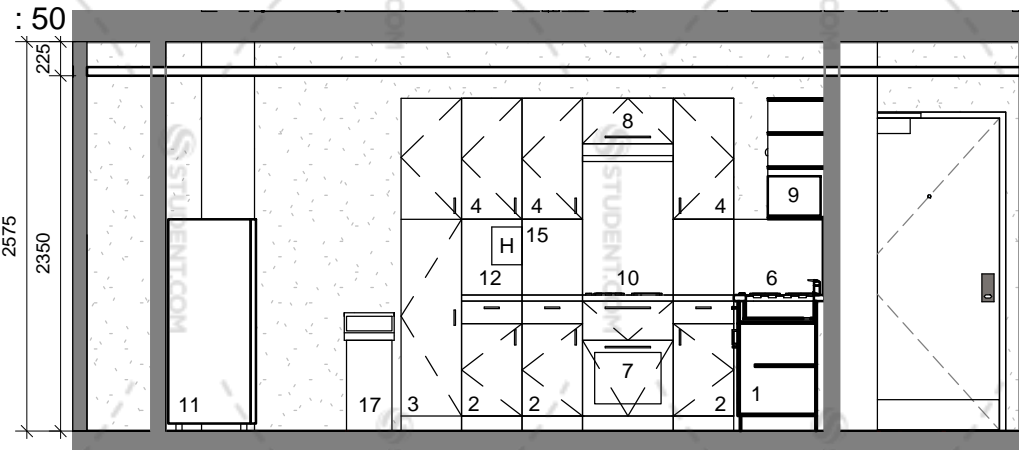
Kitchen Lounge 9 RCP
 1 : 100



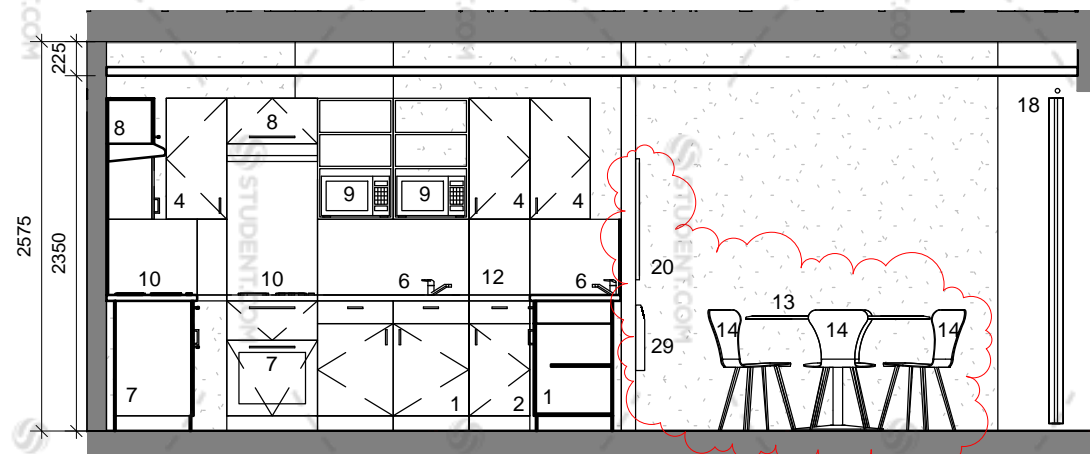
KL9 Elevation 1
 1 : 50



KL9 Elevation 2
 1 : 50



KL9 Elevation 3
 1 : 50



KL9 Elevation 4
 1 : 50

notes:
 All dimensions are in millimetres unless stated otherwise. No dimensions to be scaled from drawings. All dimensions to be checked on site prior to manufacture.
 Any discrepancies between drawings and site conditions are to be reported to the contract manager.
 This drawing is to be read in conjunction with all relevant Structural Engineers and Mechanical & Electrical Engineers drawings and specification.

- KEY**
- Wide base cupboard - W1000mm x H860mm inc 100mm plinth, 1nr drawer and 1nr blank panel. Nr of doors as shown on drawing.
 - Base units with drawer - W400mm x H860 o/a inc 100mm plinth, 1 per student.
 - Tall Cupboard - W400mm x D600mm x H2100 plus 100mm plinth.
 - Wall cupboard - W400mm x H800mm, 1 per student.
 - Fridge - 183 Litre energy A rated, (Hotpoint or similar approved,) 6 shelves + salad drawer.
 - Sink - Stainless steel single drainer with chrome mono mixer taps.
 - Oven - Stainless steel multi function electric fan assisted single built in. Energy A rated (Hotpoint/ Ignis or similar approved)
 - Cooker hood - (Ignis or similar approved.)
 - Microwave oven - Combination Type Daewoo 800w - 20litre.
 - Hob - 4 Ring electric solid plate stainless steel (Hotpoint or similar approved.)
 - Freezer - 113 Litre energy A rated, (Hotpoint or similar approved.) 6 drawers.
 - Worktop - 40mm thick roll edge, 900mm floor to top surface with 400mm high splashback panel to match breakfast bar / worktop.
 - Dining table - 1200mm diameter for 5+ bed cluster, 1000mm diameter for 3 or 4 bed cluster.
 - Dining Chair - 1 per student.
 - Fire Blanket - 1000mm x 1000mm.
 - Recycling bin - 50lt. (nr of compartments to meet LA recycling requirements.)
 - General waste bin - 50lt.
 - Curtains and associated track - to suit window aperture as required. Evolution Eve Mocha fabric with black blackout backing.
 - Coffee table - W600 x H450 x D450 (deep profile as Magenta scheme.)
 - Pinboard - W1200 x H800mm, Camira Lucia fabric range covered, colour - TBC
 - Faux leather tub chair/ 2 seat/ 3 seat sofa mix to give 1 seat per student.
 - Wall mounted TV - 42"
 - Breakfast bar - W800mm, length as drawings, chrome legs (as required.)
 - Bar Stool - leatherette/faux leather finish with chrome base. 1 per student.
 - Accessible base unit - reduced height, on casters.
 - Accessible worktop - adjustable height. Ropox or similar.
 - Fridge Freezer - Combined
 - Cylinder cupboard (for hot water cylinder) - (preferred option to locate cylinder cupboard in cluster corridor where possible.)
 - Wall mounted electric panel heater

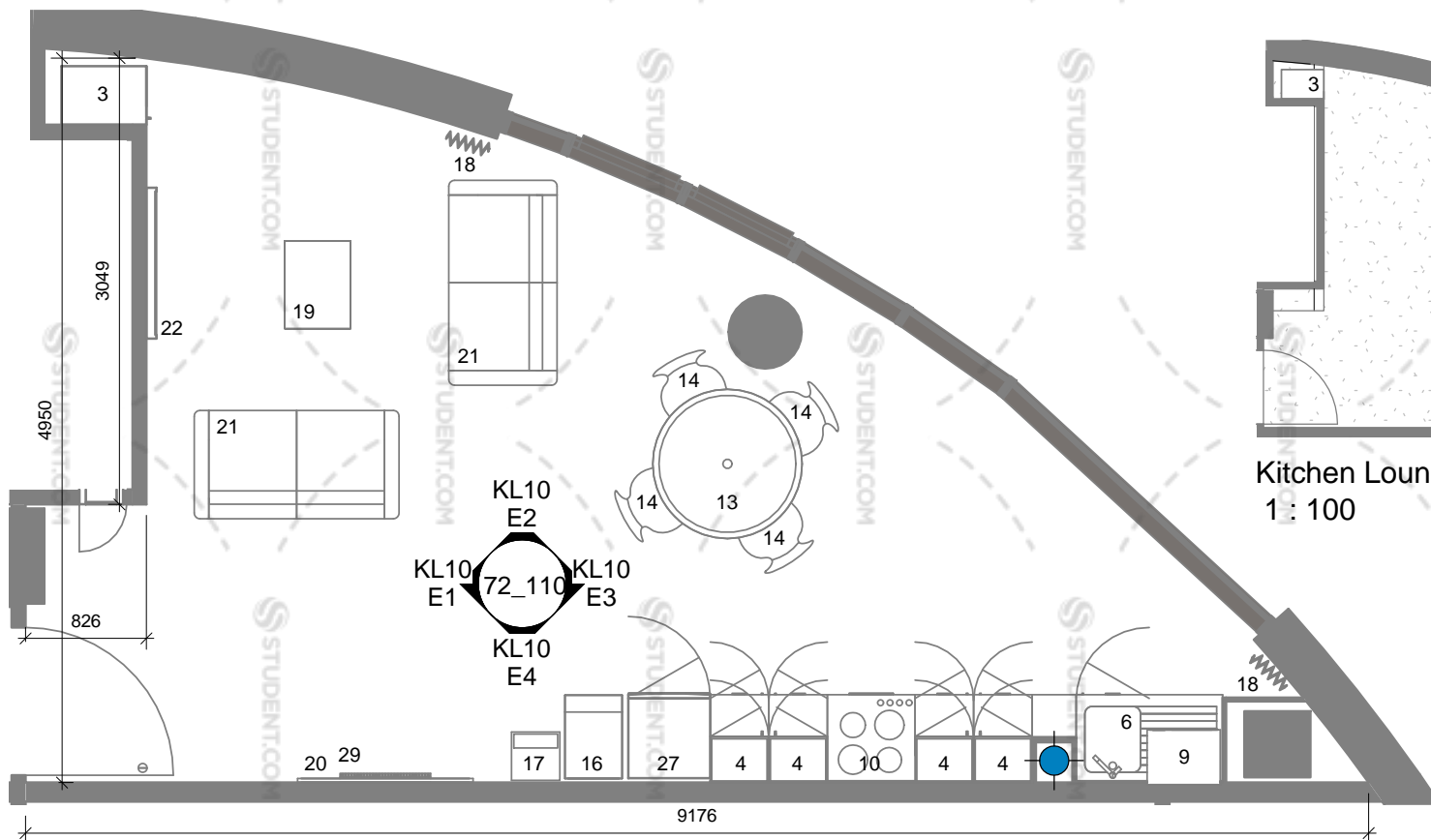
dwg status:

PRELIMINARY

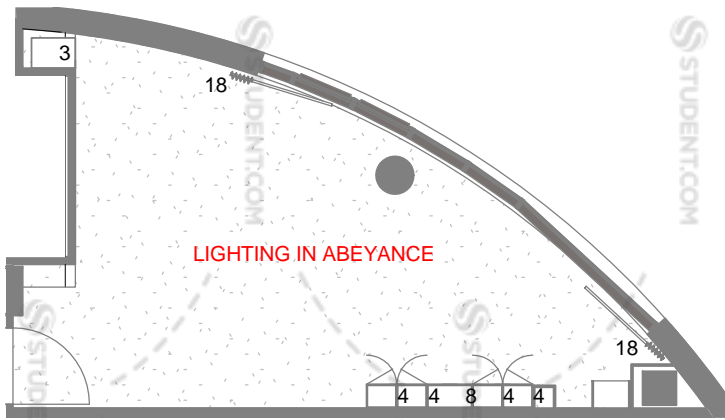
Rev	Description	Date	By	Chk
E	Sofa / TV area and dining area swapped	16/05/14	IR	GE
D	Revised in accordance with Client comments, electric panel heater location shown.	14/05/14	IR	GE
C	Layout revised in line with KSHL comments, including substitution of breakfast bar and stools with dining table and chairs	29/04/14	RD	
B	Layout revised in line with KSHL comments	03/04/14	IR	GE
A	First Issue	07/03/14	RD	IR



dwg title:	Kitchen Lounge Type 9 (six bed cluster)		
Date 1	Date 1		
job title:	Ablett House for Knightsbridge Student Housing Ltd.		
scale:	As indicated A3	drawn:	RD
date:	04/03/14	job no:	1425
dwg no:	72_109	rev:	E



Kitchen Lounge 10 Plan
1 : 50



Kitchen Lounge 10 Reflected Ceiling Plan
1 : 100

KITCHEN LOUNGE TYPE 10 NOTES

4 BED CLUSTER
Kitchen Lounge Type 10 serves a four bedroom cluster flat that includes one premium bedroom.

FLAT NUMBERS RELATING TO KL10:

GROUND FLOOR	-
FIRST FLOOR	-
SECOND FLOOR	-
THIRD FLOOR	-
FOURTH FLOOR	-
FIFTH FLOOR	-
SIXTH FLOOR	-
SEVENTH FLOOR	-
EIGHTH FLOOR	-
NINTH FLOOR	-
TENTH FLOOR	70
ELEVENTH FLOOR	75
TOTAL INSTANCES	2

notes:

All dimensions are in millimetres unless stated otherwise. No dimensions to be scaled from drawings. All dimensions to be checked on site prior to manufacture.

Any discrepancies between drawings and site conditions are to be reported to the contract manager.

This drawing is to be read in conjunction with all relevant Structural Engineers and Mechanical & Electrical Engineers drawings and specification.

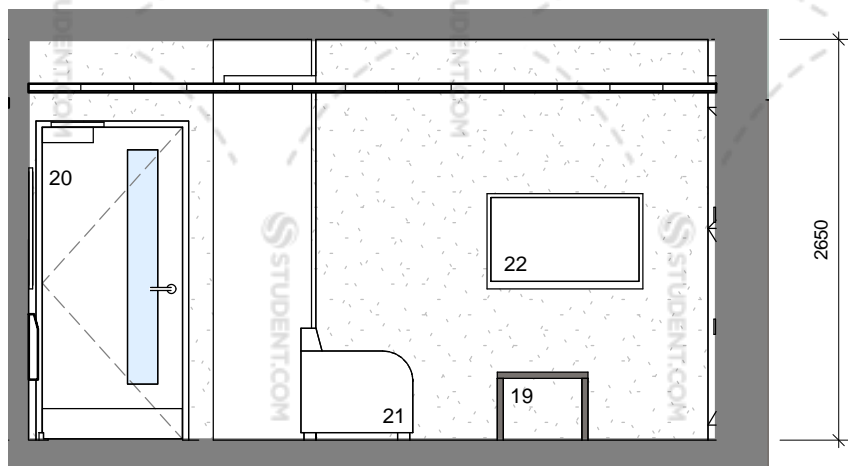
KEY

- Wide base cupboard - W1000mm x H860mm inc 100mm plinth, 1nr drawer and 1nr blank panel. Nr of doors as shown on drawing.
- Base units with drawer - W400mm x H860 o/a inc 100mm plinth, 1 per student.
- Tall Cupboard - W400mm x D600mm x H2100 plus 100mm plinth.
- Wall cupboard - W400mm x H800mm, 1 per student.
- Fridge - 183 Litre energy A rated, (Hotpoint or similar approved,) 6 shelves + salad drawer.
- Sink - Stainless steel single drainer with chrome mono mixer taps.
- Oven - Stainless steel multi function electric fan assisted single built in. Energy A rated (Hotpoint/Ignis or similar approved)
- Cooker hood - (Ignis or similar approved.)
- Microwave oven - Combination Type Daewoo 800w - 20litre.
- Hob - 4 Ring electric solid plate stainless steel (Hotpoint or similar approved.)
- Freezer - 113 Litre energy A rated, (Hotpoint or similar approved.) 6 drawers.
- Worktop - 40mm thick roll edge, 900mm floor to top surface with 400mm high splashback panel to match breakfast bar / worktop.
- Dining table - 1200mm diameter for 5+ bed cluster, 1000mm diameter for 3 or 4 bed cluster.
- Dining Chair - 1 per student.
- Fire Blanket - 1000mm x 1000mm.
- Recycling bin - 50lt. (nr of compartments to meet LA recycling requirements.)
- General waste bin - 50lt.
- Curtains and associated track - to suit window aperture as required. Evolution Eve Mocha fabric with black blackout backing.
- Coffee table - W600 x H450 x D450 (deep profile as Magenta scheme.)
- Pinboard - W1200 x H800mm, Camira Lucia fabric range covered. colour - TBC
- Faux leather tub chair/ 2 seat/ 3 seat sofa mix to give 1 seat per student.
- Wall mounted TV - 42"
- Breakfast bar - W800mm, length as drawings, chrome legs (as required.)
- Bar Stool - leatherette/faux leather finish with chrome base. 1 per student.
- Accessible base unit - reduced height, on casters.
- Accessible worktop - adjustable height. Ropox or similar.
- Fridge Freezer - Combined
- Cylinder cupboard (for hot water cylinder) - (preferred option to locate cylinder cupboard in cluster corridor where possible.)
- Wall mounted electric panel heater

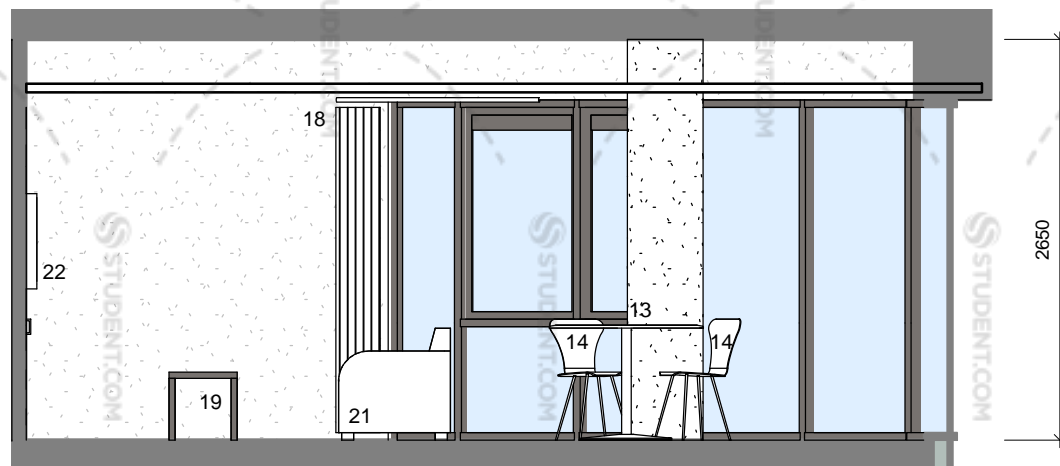
dwg status:

PRELIMINARY

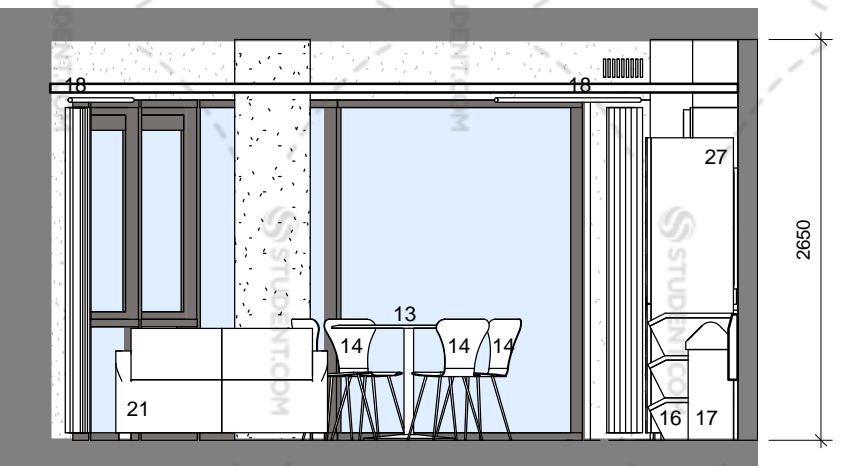
Rev	Description	Date	By	Chk
D	Revised in accordance with Client comments, electric panel heater location shown.	14/05/14	IR	GE
C	Layout revised in line with KSHL comments, including substitution of breakfast bar and stools with dining table and chairs	29/04/14	RD	
B	Layout revised in line with KSHL comments	03/04/14	IR	GE
A	First Issue	07/03/14	RD	IR



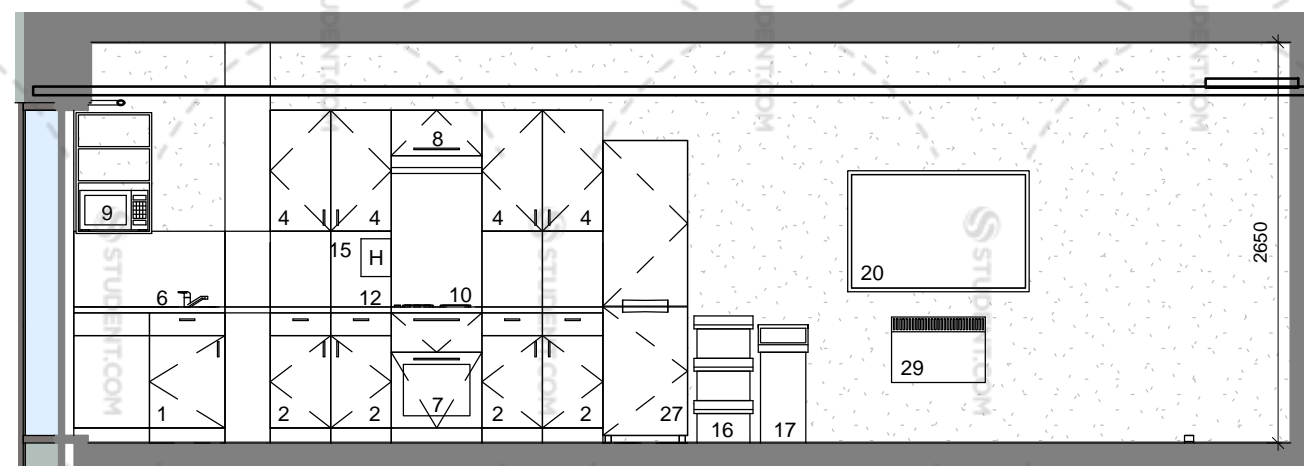
KL10 Elevation 1
1 : 50



KL10 Elevation 2
1 : 50



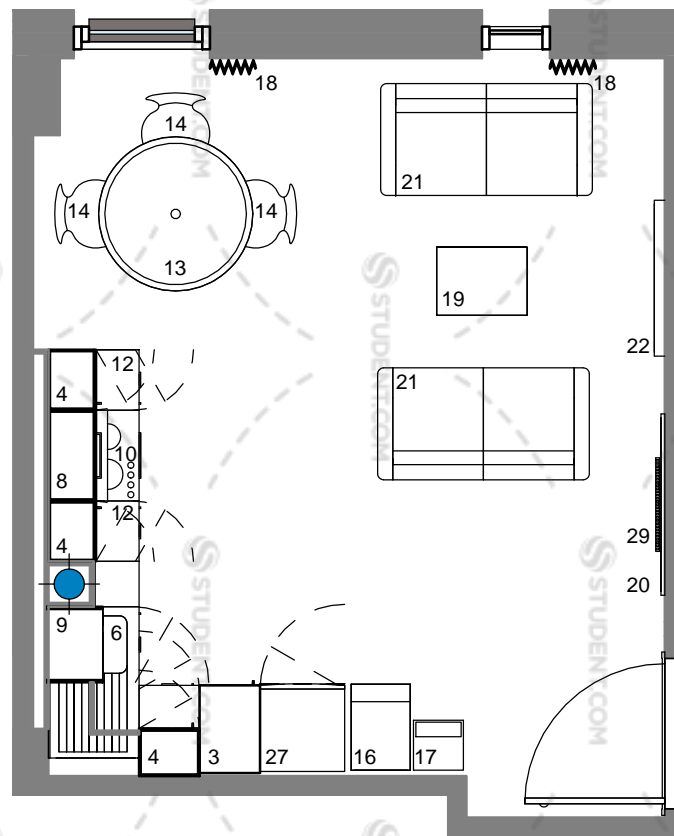
KL10 Elevation 3
1 : 50



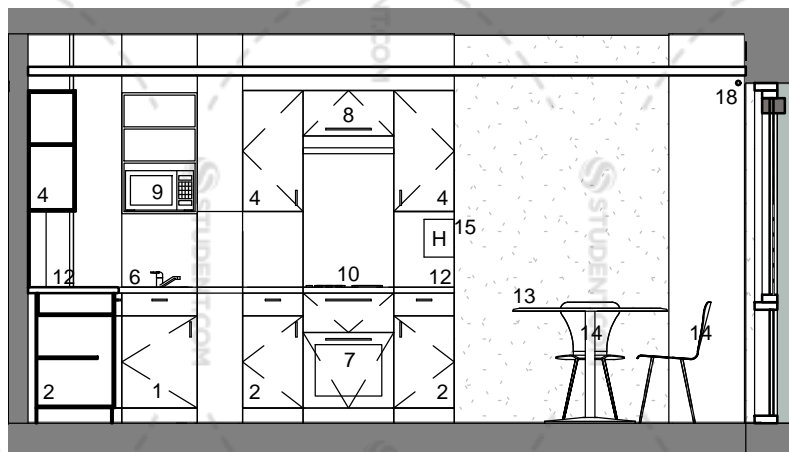
KL10 Elevation 4
1 : 50



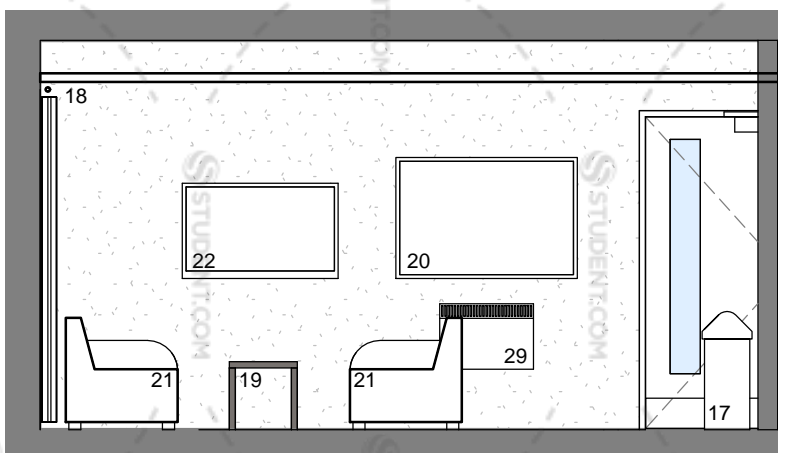
dwg title:	Kitchen Lounge Type 10 (four bed cluster)		
job title:	Ablett House for Knightsbridge Student Housing Ltd.		
scale:	As indicated A3	drawn:	RD
date:	04/03/14	job no:	1425
dwg no:	72_110	rev:	D



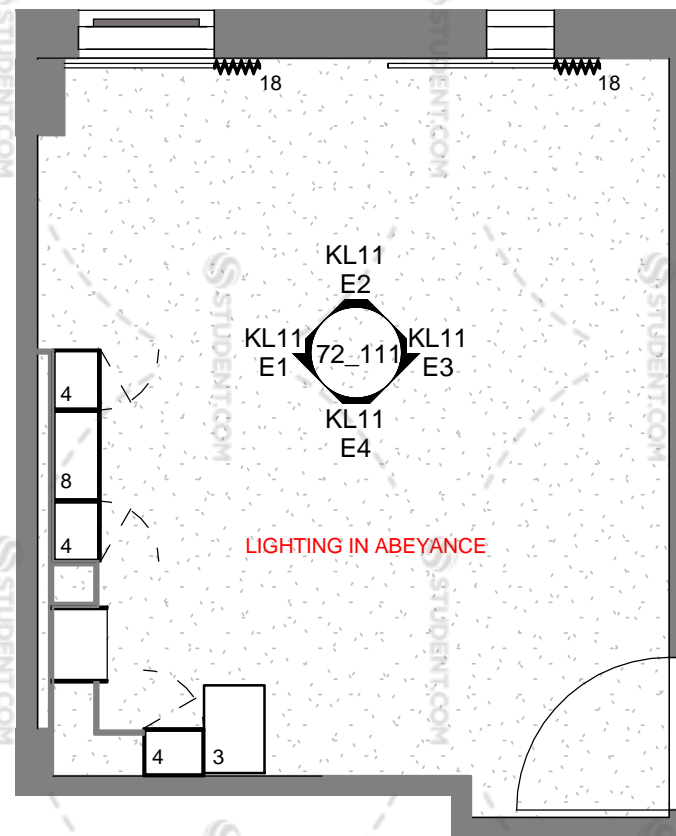
Kitchen Lounge 11 Plan
1 : 50



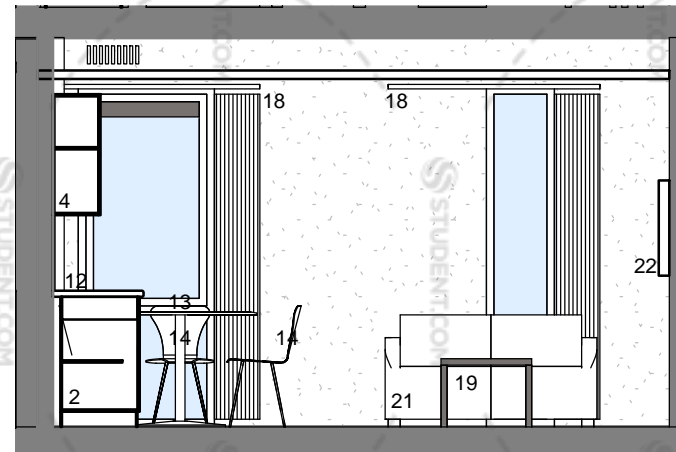
KL11 Elevation 1
1 : 50



KL11 Elevation 3
1 : 50



Kitchen Lounge 11 Reflected Ceiling Plan
1 : 50



KL11 Elevation 2
1 : 50



KL11 Elevation 4
1 : 50

KITCHEN LOUNGE TYPE 11 NOTES

3 BED CLUSTER
Kitchen Lounge Type 11 serves a three bedroom cluster flat.

FLAT NUMBERS RELATING TO KL11:

GROUND FLOOR	-
FIRST FLOOR	-
SECOND FLOOR	-
THIRD FLOOR	-
FOURTH FLOOR	-
FIFTH FLOOR	-
SIXTH FLOOR	-
SEVENTH FLOOR	-
EIGHTH FLOOR	-
NINTH FLOOR	-
TENTH FLOOR	69
ELEVENTH FLOOR	74
TOTAL INSTANCES	2

notes:
All dimensions are in millimetres unless stated otherwise. No dimensions to be scaled from drawings. All dimensions to be checked on site prior to manufacture.
Any discrepancies between drawings and site conditions are to be reported to the contract manager.
This drawing is to be read in conjunction with all relevant Structural Engineers and Mechanical & Electrical Engineers drawings and specification.

- KEY**
- Wide base cupboard - W1000mm x H860mm inc 100mm plinth, 1nr drawer and 1nr blank panel. Nr of doors as shown on drawing.
 - Base units with drawer - W400mm x H860 o/a inc 100mm plinth. 1 per student.
 - Tall Cupboard - W400mm x D600mm x H2100 plus 100mm plinth.
 - Wall cupboard - W400mm x H800mm. 1 per student.
 - Fridge - 183 Litre energy A rated, (Hotpoint or similar approved.) 6 shelves + salad drawer.
 - Sink - Stainless steel single drainer with chrome mono mixer taps.
 - Oven - Stainless steel multi function electric fan assisted single built in. Energy A rated (Hotpoint/ Ignis or similar approved.)
 - Cooker hood - (Ignis or similar approved.)
 - Microwave oven - Combination Type Daewoo 800w - 20litre.
 - Hob - 4 Ring electric solid plate stainless steel (Hotpoint or similar approved.)
 - Freezer - 113 Litre energy A rated, (Hotpoint or similar approved.) 6 drawers.
 - Worktop - 40mm thick roll edge. 900mm floor to top surface with 400mm high splashback panel to match breakfast bar / worktop.
 - Dining table - 1200mm diameter for 5+ bed cluster, 1000mm diameter for 3 or 4 bed cluster.
 - Dining Chair - 1 per student.
 - Fire Blanket - 1000mm x 1000mm.
 - Recycling bin - 50lt. (nr of compartments to meet LA recycling requirements.)
 - General waste bin - 50lt.
 - Curtains and associated track - to suit window aperture as required. Evolution Eve Mocha fabric with black blackout backing.
 - Coffee table - W600 x H450 x D450 (deep profile as Magenta scheme.)
 - Pinboard - W1200 x H800mm. Camira Lucia fabric range covered. colour - TBC
 - Faux leather tub chair/ 2 seat/ 3 seat sofa mix to give 1 seat per student.
 - Wall mounted TV - 42".
 - Breakfast bar - W800mm, length as drawings, chrome legs (as required.)
 - Bar Stool - leatherette/faux leather finish with chrome base. 1 per student.
 - Accessible base unit - reduced height, on casters.
 - Accessible worktop - adjustable height. Popox or similar.
 - Fridge Freezer - Combined
 - Cylinder cupboard (for hot water cylinder) - (preferred option to locate cylinder cupboard in cluster corridor where possible.)
 - Wall mounted electric panel heater

dwg status:

PRELIMINARY

Rev	Description	Date	By	Chk
B	Revised in accordance with Client comments, electric panel heater location shown.	14/05/14	IR	GE
A	First Issue	29/04/14	RD	



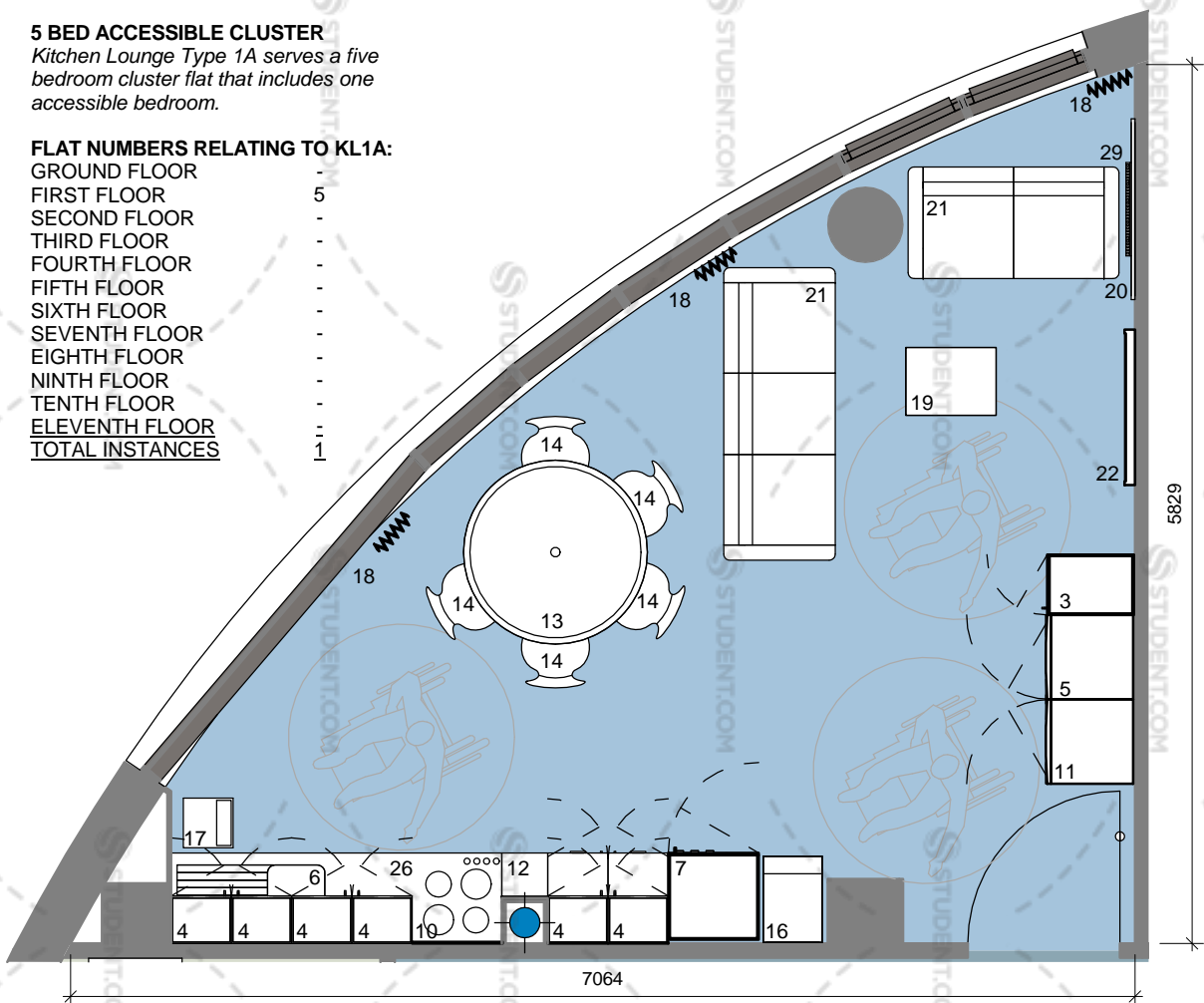
dwg title:	Kitchen Lounge Type 11 (three bed cluster)		
job title:	Ablett House for Knightsbridge Student Housing Ltd.		
scale:	1 : 50 @ A3	drawn:	Author
date:	04/23/14	job no:	1425
dwg no:	72_111	rev:	B

KITCHEN LOUNGE TYPE 1A NOTES

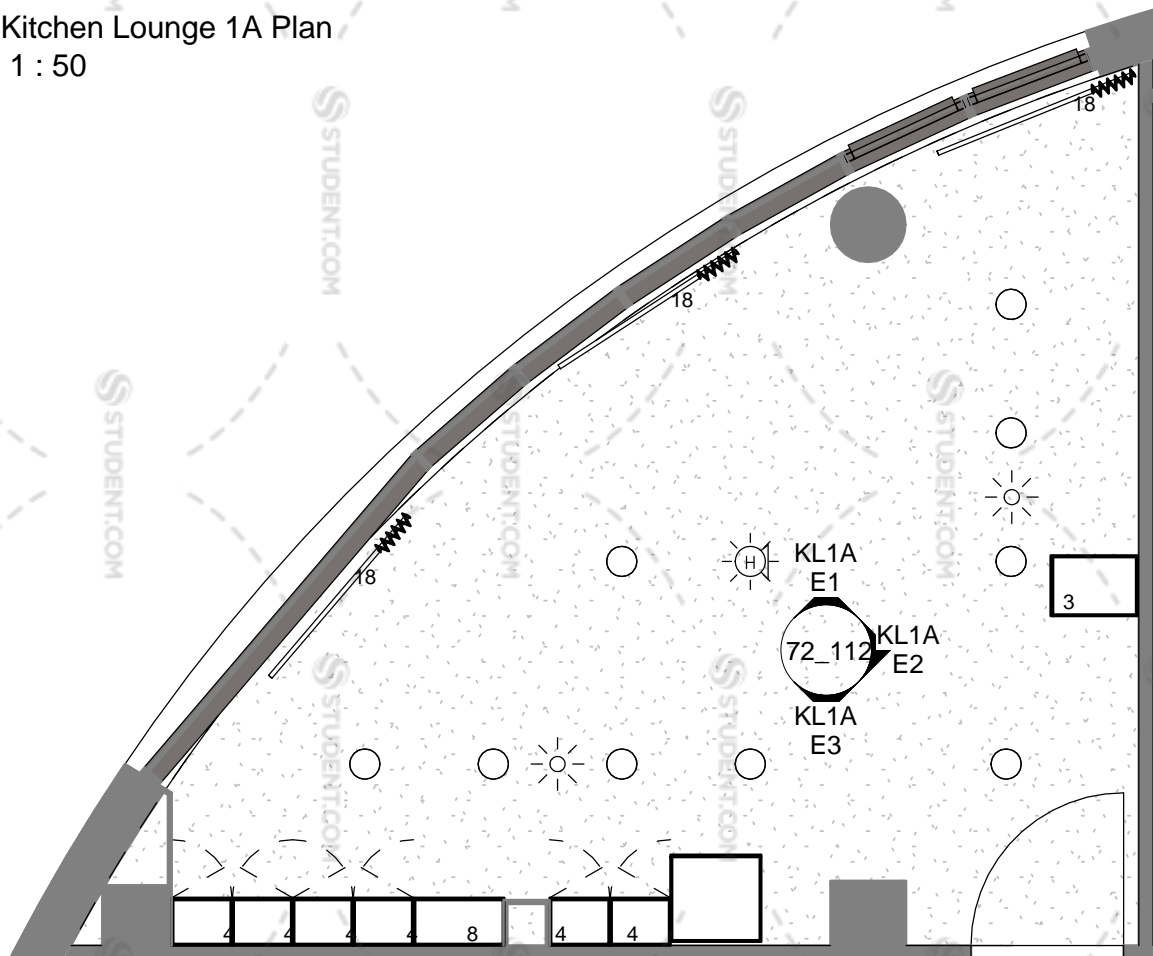
5 BED ACCESSIBLE CLUSTER
 Kitchen Lounge Type 1A serves a five bedroom cluster flat that includes one accessible bedroom.

FLAT NUMBERS RELATING TO KL1A:

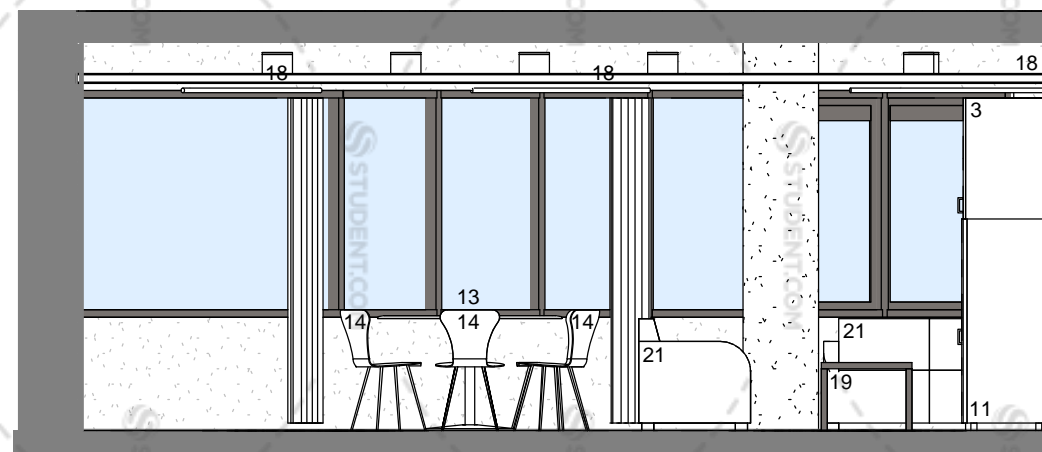
GROUND FLOOR	-
FIRST FLOOR	5
SECOND FLOOR	-
THIRD FLOOR	-
FOURTH FLOOR	-
FIFTH FLOOR	-
SIXTH FLOOR	-
SEVENTH FLOOR	-
EIGHTH FLOOR	-
NINTH FLOOR	-
TENTH FLOOR	-
ELEVENTH FLOOR	-
TOTAL INSTANCES	1



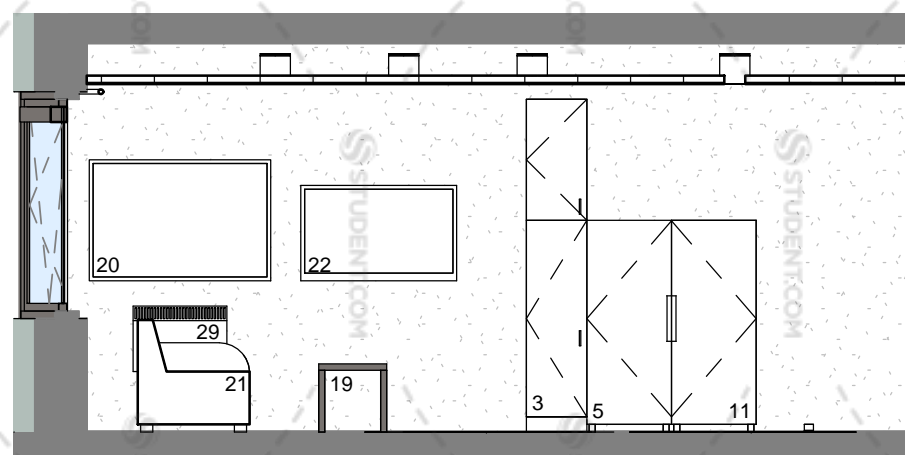
Kitchen Lounge 1A Plan
 1 : 50



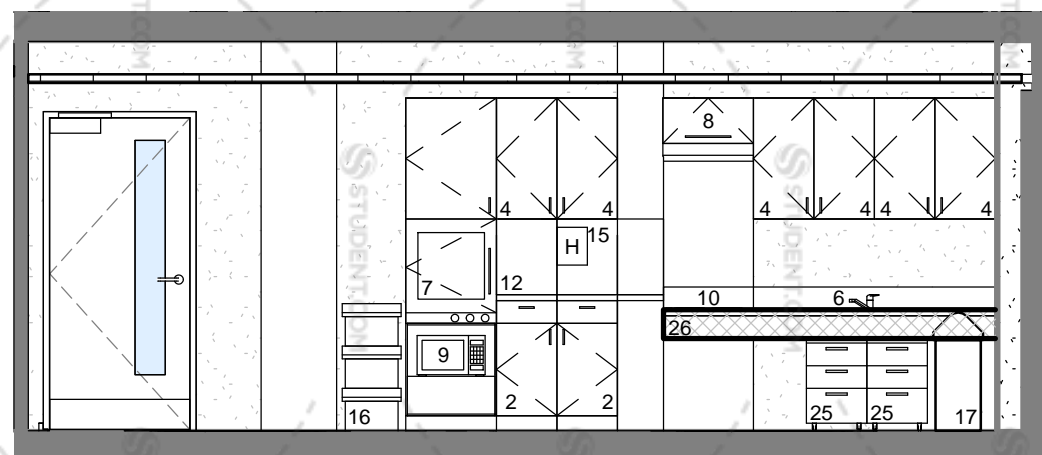
Kitchen Lounge 1A Reflected Ceiling Plan
 1 : 50



KL1A Elevation 1
 1 : 50



KL1A Elevation 2
 1 : 50



KL1A Elevation 3
 1 : 50

notes:

All dimensions are in millimetres unless stated otherwise. No dimensions to be scaled from drawings. All dimensions to be checked on site prior to manufacture.
 Any discrepancies between drawings and site conditions are to be reported to the contract manager.
 This drawing is to be read in conjunction with all relevant Structural Engineers and Mechanical & Electrical Engineers drawings and specification.

KEY

- Wide base cupboard - W1000mm x H860mm inc 100mm plinth, 1nr drawer and 1nr blank panel. Nr of doors as shown on drawing.
- Base units with drawer - W400mm x H860 o/a inc 100mm plinth, 1 per student.
- Tall Cupboard - W400mm x D600mm x H2100 plus 100mm plinth.
- Wall cupboard - W400mm x H800mm, 1 per student.
- Fridge - 183 Litre energy A rated, (Hotpoint or similar approved,) 6 shelves + salad drawer.
- Sink - Stainless steel single drainer with chrome mono mixer taps.
- Oven - Stainless steel multi function electric fan assisted single built in. Energy A rated (Hotpoint/ Ignis or similar approved)
- Cooker hood - (Ignis or similar approved.)
- Microwave oven - Combination Type Daewoo 800w – 20litre.
- Hob - 4 Ring electric solid plate stainless steel (Hotpoint or similar approved.)
- Freezer - 113 Litre energy A rated, (Hotpoint or similar approved,) 6 drawers.
- Worktop - 40mm thick roll edge, 900mm floor to top surface with 400mm high splashback panel to match breakfast bar / worktop.
- Dining table - 1200mm diameter for 5+ bed cluster, 1000mm diameter for 3 or 4 bed cluster.
- Dining Chair - 1 per student.
- Fire Blanket - 1000mm x 1000mm.
- Recycling bin - 50lt. (nr of compartments to meet LA recycling requirements.)
- General waste bin - 50lt.
- Curtains and associated track - to suit window aperture as required. Evolution Eve Mocha fabric with black blackout backing.
- Coffee table - W600 x H450 x D450 (deep profile as Magenta scheme.)
- Pinboard - W1200 x H800mm, Camira Lucia fabric range covered, colour - TBC
- Faux leather tub chair/ 2 seat/ 3 seat sofa mix to give 1 seat per student.
- Wall mounted TV - 42"
- Breakfast bar - W800mm, length as drawings, chrome legs (as required.)
- Bar Stool - leatherette/faux leather finish with chrome base. 1 per student.
- Accessible base unit - reduced height, on casters.
- Accessible worktop - adjustable height. Ropox or similar.
- Fridge Freezer - Combined
- Cylinder cupboard (for hot water cylinder) - (preferred option to locate cylinder cupboard in cluster corridor where possible.)
- Wall mounted electric panel heater

dwg status:

PRELIMINARY

Rev	Description	Date	By	Chk
B	Revised in accordance with Client comments, electric panel heater location shown.	14/05/14	IR	GE
A	First Issue	29/04/14	RD	



dwg title:	Kitchen Lounge Type 1A (accessible five bed cluster)		
job title:	Ablett House for Knightsbridge Student Housing Ltd.		
scale:	1 : 50 @ A3	drawn:	Author
date:	04/23/14	job no:	1425
dwg no:	72_112	rev:	B

notes:
 All dimensions are in millimetres unless stated otherwise. No dimensions to be scaled from drawings. All dimensions to be checked on site prior to manufacture.
 Any discrepancies between drawings and site conditions are to be reported to the contract manager.
 This drawing is to be read in conjunction with all relevant Structural Engineers and Mechanical & Electrical Engineers drawings and specification.

- KEY
- Wide base cupboard - W1000mm x H860mm inc 100mm plinth, 1nr drawer and 1nr blank panel. Nr of doors as shown on drawing.
 - Base units with drawer - W400mm x H860 o/a inc 100mm plinth, 1 per student.
 - Tall Cupboard - W400mm x D600mm x H2100 plus 100mm plinth.
 - Wall cupboard - W400mm x H800mm, 1 per student.
 - Fridge - 183 Litre energy A rated, (Hotpoint or similar approved,) 6 shelves + salad drawer.
 - Sink - Stainless steel single drainer with chrome mono mixer taps.
 - Oven - Stainless steel multi function electric fan assisted single built in. Energy A rated (Hotpoint/Ignis or similar approved)
 - Cooker hood - (Ignis or similar approved.)
 - Microwave oven - Combination Type Daewoo 800w - 20litre.
 - Hob - 4 Ring electric solid plate stainless steel (Hotpoint or similar approved.)
 - Freezer - 113 Litre energy A rated, (Hotpoint or similar approved.) 6 drawers.
 - Worktop - 40mm thick roll edge, 900mm floor to top surface with 400mm high splashback panel to match breakfast bar / worktop.
 - Dining table - 1200mm diameter for 5+ bed cluster, 1000mm diameter for 3 or 4 bed cluster.
 - Dining Chair - 1 per student.
 - Fire Blanket - 1000mm x 1000mm.
 - Recycling bin - 50lt. (nr of compartments to meet LA recycling requirements.)
 - General waste bin - 50lt.
 - Curtains and associated track - to suit window aperture as required. Evolution Eve Mocha fabric with black blackout backing.
 - Coffee table - W600 x H450 x D450 (deep profile as Magenta scheme.)
 - Pinboard - W1200 x H800mm, Camira Lucia fabric range covered, colour - TBC
 - Faux leather tub chair/ 2 seat/ 3 seat sofa mix to give 1 seat per student.
 - Wall mounted TV - 42"
 - Breakfast bar - W800mm, length as drawings, chrome legs (as required.)
 - Bar Stool - leatherette/faux leather finish with chrome base. 1 per student.
 - Accessible base unit - reduced height, on casters.
 - Accessible worktop - adjustable height. Ropox or similar.
 - Fridge Freezer - Combined
 - Cylinder cupboard (for hot water cylinder) - (preferred option to locate cylinder cupboard in cluster corridor where possible.)
 - Wall mounted electric panel heater

dwg status:

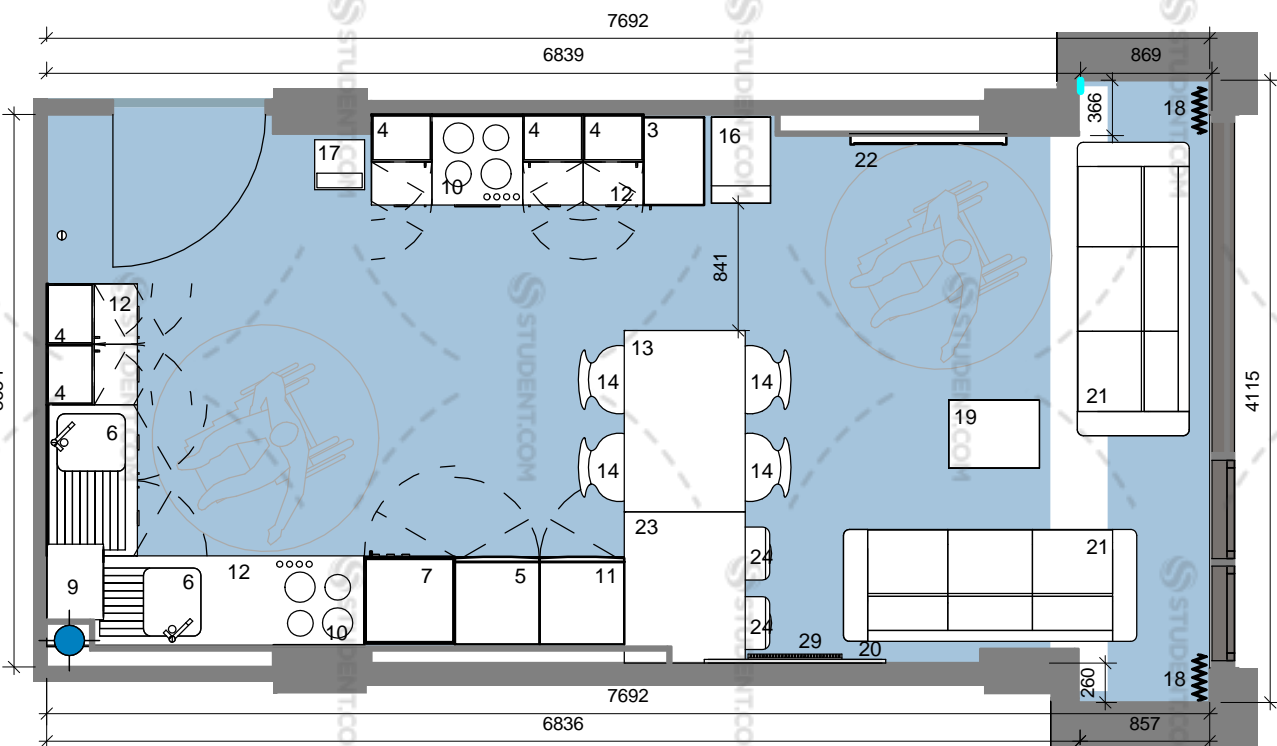
PRELIMINARY

Rev	Description	Date	By	Chk
B	Revised in accordance with Client comments, electric panel heater location shown.	14/05/14	IR	GE
A	First Issue	29/04/14	RD	

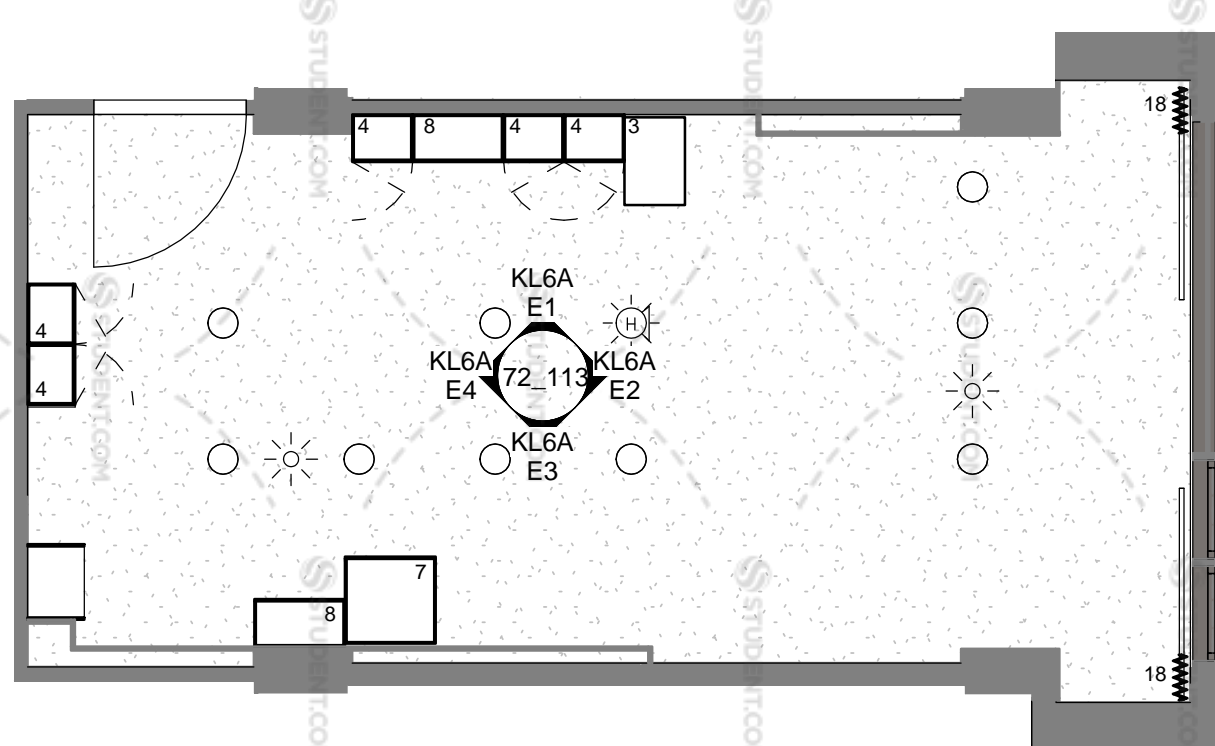


oconnell east architects
 63 Newton Street, Manchester, M1 1ET
 t: 0161 839 9380 f: 0161 833 1638

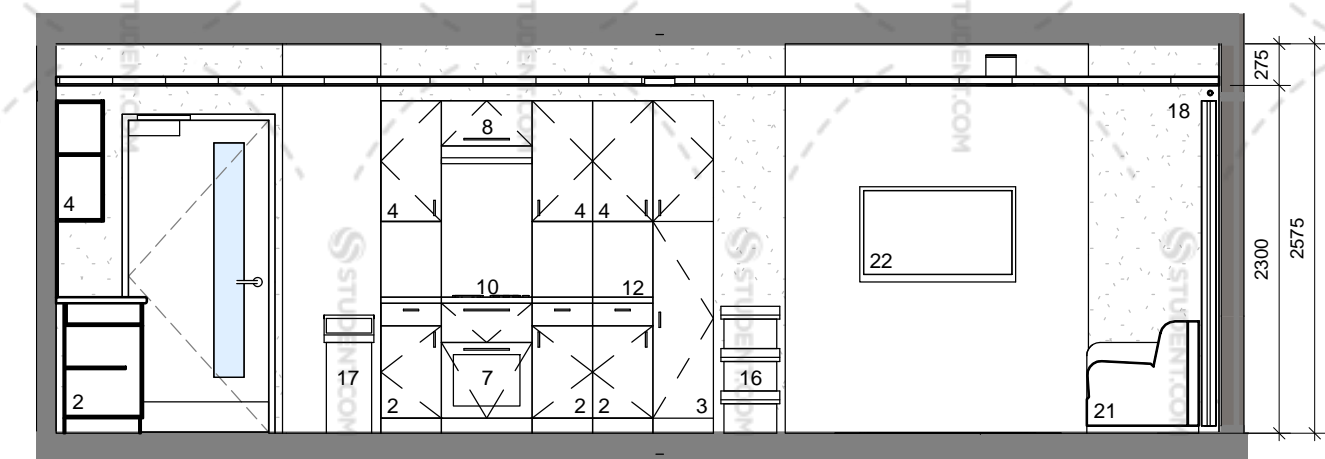
dwg title:	Kitchen Lounge Type 6A (accessible six bed cluster)		
job title:	Ablett House for Knightsbridge Student Housing Ltd.		
scale:	1 : 50 @ A3	drawn:	Author
date:	04/23/14	job no:	1425
dwg no:	72_113	rev:	B



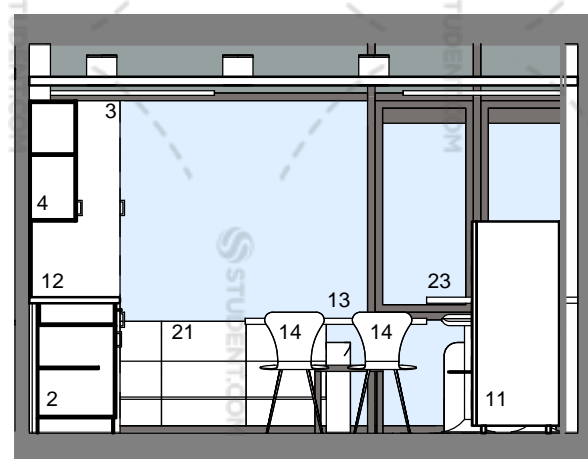
Kitchen Lounge 6A Plan
 1 : 50



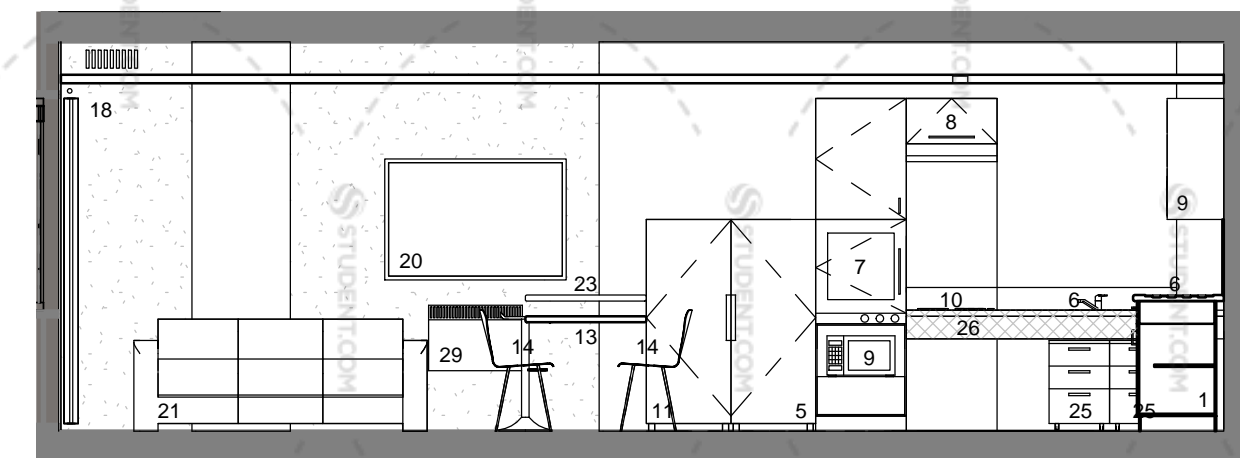
Kitchen Lounge 6A Reflected Ceiling Plan
 1 : 50



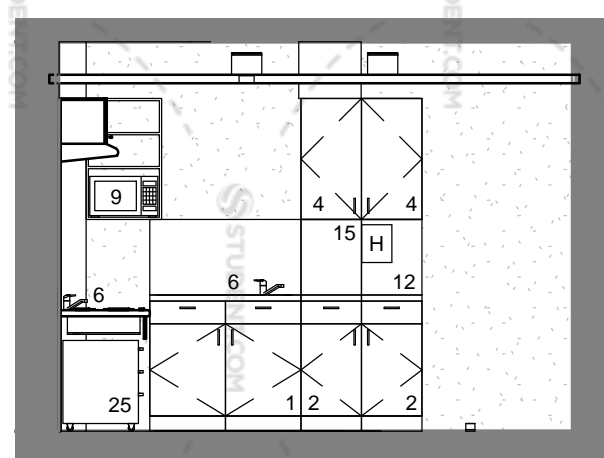
KL6A Elevation 1
 1 : 50



KL6A Elevation 2
 1 : 50



KL6A Elevation 3
 1 : 50



KL6A Elevation 4
 1 : 50

KITCHEN LOUNGE TYPE 6A NOTES

6 BED ACCESSIBLE CLUSTER
 Kitchen Lounge Type 6A serves a six bedroom cluster flat that includes one accessible bedroom.

FLAT NUMBERS RELATING TO KL6A:

GROUND FLOOR	-
FIRST FLOOR	8
SECOND FLOOR	-
THIRD FLOOR	-
FOURTH FLOOR	-
FIFTH FLOOR	-
SIXTH FLOOR	-
SEVENTH FLOOR	-
EIGHTH FLOOR	-
NINTH FLOOR	-
TENTH FLOOR	-
ELEVENTH FLOOR	-
TOTAL INSTANCES	1