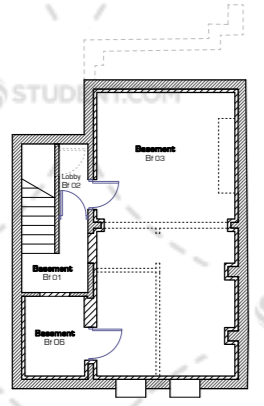


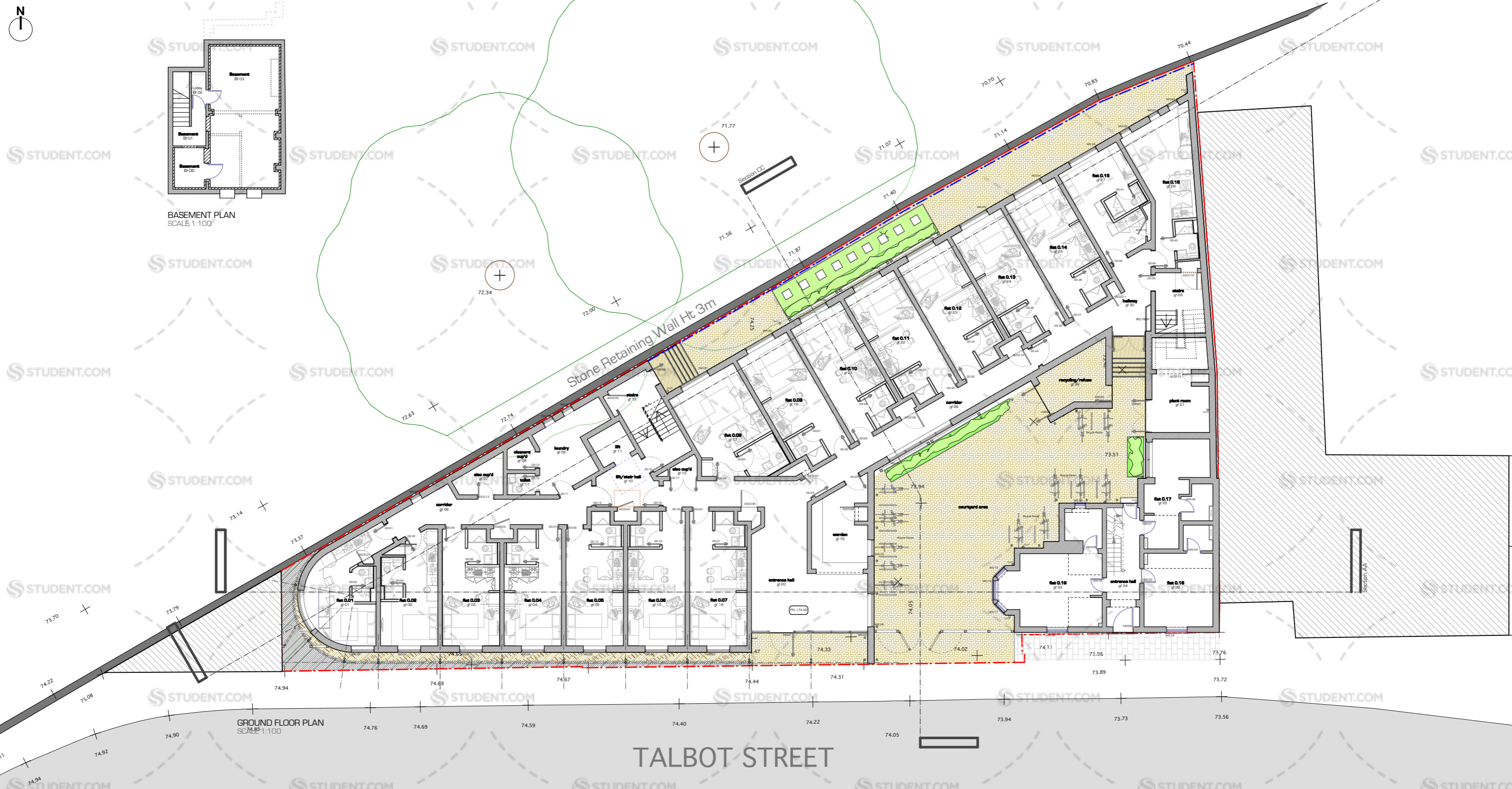
General Notes

The building must achieve the following U-values
External Walls - **0.15 W/m²K**
Floors - **0.12 W/m²K**
External Windows - **1.51 W/m²K**
Roof - **0.12 W/m²K**

This drawing is to be read in conjunction with
KKE drawing 0517_370



BASEMENT PLAN
SCALE 1:100



GROUND FLOOR PLAN
SCALE 1:100

TALBOT STREET