

LIVERPOOL



CROSSHALL

VITA STUDENT


CROSSHALL



G

Ground Floor

Liverpool
Crosshall

-  LITE
-  CLASSIC
-  CLASSIC PLUS
-  PREMIUM
-  PREMIUM PLUS
-  TWO BED
-  ACCESSIBLE ROOM

Room Size (sqm)

| | |
|----|----|
| 01 | 23 |
| 02 | 18 |
| 03 | 17 |
| 04 | 16 |
| 05 | 18 |
| 06 | 17 |
| 07 | 18 |
| 08 | 18 |
| 09 | 19 |
| 10 | 17 |
| 11 | 17 |
| 12 | 15 |
| 13 | 17 |
| 14 | 16 |
| 15 | 16 |
| 16 | 16 |
| 17 | 18 |
| 18 | 15 |
| 19 | 15 |
| 20 | 15 |
| 21 | 18 |
| 22 | 28 |
| 23 | 15 |



First Floor

Liverpool
Crosshall



- LITE
- CLASSIC
- CLASSIC PLUS
- PREMIUM
- PREMIUM PLUS
- TWO BED
- ACCESSIBLE ROOM

Room Size (sqm)

| Room | Size (sqm) |
|------|------------|
| 101 | 23 |
| 102 | 18 |
| 103 | 17 |
| 104 | 16 |
| 105 | 18 |
| 106 | 17 |
| 107 | 18 |
| 108 | 17 |
| 109 | 19 |
| 110 | 17 |
| 111 | 17 |
| 112 | 15 |
| 113 | 17 |
| 114 | 16 |
| 115 | 16 |
| 116 | 16 |
| 117 | 18 |
| 118 | 15 |
| 119 | 15 |
| 120 | 15 |
| 121 | 17 |
| 122 | 28 |
| 123 | 15 |

Second Floor

Liverpool
Crosshall



- LITE
- CLASSIC
- CLASSIC PLUS
- PREMIUM
- PREMIUM PLUS
- TWO BED
- ACCESSIBLE ROOM

Room Size (sqm)

| Room | Size (sqm) |
|------|------------|
| 201 | 23 |
| 202 | 18 |
| 203 | 17 |
| 204 | 16 |
| 205 | 18 |
| 206 | 17 |
| 207 | 18 |
| 208 | 18 |
| 209 | 19 |
| 210 | 17 |
| 211 | 17 |
| 212 | 15 |
| 213 | 17 |
| 214 | 16 |
| 215 | 16 |
| 216 | 16 |
| 217 | 18 |
| 218 | 15 |
| 219 | 15 |
| 220 | 15 |
| 221 | 17 |
| 222 | 28 |
| 223 | 15 |

Third Floor

Liverpool
Crosshall



- LITE
- CLASSIC
- CLASSIC PLUS
- PREMIUM
- PREMIUM PLUS
- TWO BED
- ACCESSIBLE ROOM

Room Size (sqm)

| Room | Size (sqm) |
|------|------------|
| 301 | 23 |
| 302 | 18 |
| 303 | 17 |
| 304 | 16 |
| 305 | 18 |
| 306 | 17 |
| 307 | 18 |
| 308 | 18 |
| 309 | 19 |
| 310 | 17 |
| 311 | 17 |
| 312 | 15 |
| 313 | 17 |
| 314 | 16 |
| 315 | 16 |
| 316 | 16 |
| 317 | 18 |
| 318 | 15 |
| 319 | 15 |
| 320 | 15 |
| 321 | 17 |
| 322 | 28 |
| 323 | 15 |

Fourth Floor

Liverpool
Crosshall



- LITE
- CLASSIC
- CLASSIC PLUS
- PREMIUM
- PREMIUM PLUS
- TWO BED
- ACCESSIBLE ROOM

Room Size (sqm)

| Room | Size (sqm) |
|------|------------|
| 401 | 23 |
| 402 | 18 |
| 403 | 17 |
| 404 | 16 |
| 405 | 18 |
| 406 | 17 |
| 407 | 18 |
| 408 | 18 |
| 409 | 19 |
| 410 | 17 |
| 411 | 17 |
| 412 | 15 |
| 413 | 17 |
| 414 | 16 |
| 415 | 16 |
| 416 | 16 |
| 417 | 18 |
| 418 | 15 |
| 419 | 15 |
| 420 | 15 |
| 421 | 17 |
| 422 | 28 |
| 423 | 15 |

Fifth Floor

Liverpool
Crosshall



- LITE
- CLASSIC
- CLASSIC PLUS
- PREMIUM
- PREMIUM PLUS
- TWO BED
- ACCESSIBLE ROOM

Room Size (sqm)

| Room | Size (sqm) |
|------|------------|
| 501 | 23 |
| 502 | 18 |
| 503 | 17 |
| 504 | 16 |
| 505 | 18 |
| 506 | 17 |
| 507 | 18 |
| 508 | 18 |
| 509 | 19 |
| 510 | 17 |
| 511 | 17 |
| 512 | 15 |
| 513 | 17 |
| 514 | 16 |
| 515 | 16 |
| 516 | 16 |
| 517 | 18 |
| 518 | 15 |
| 519 | 15 |
| 520 | 15 |
| 521 | 17 |
| 522 | 28 |
| 523 | 15 |

Sixth Floor

Liverpool
Crosshall



- LITE
- CLASSIC
- CLASSIC PLUS
- PREMIUM
- PREMIUM PLUS
- TWO BED
- ACCESSIBLE ROOM

Room Size (sqm)

| | |
|-----|-----|
| 601 | 23. |
| 602 | 18 |
| 603 | 17. |
| 604 | 16 |
| 605 | 18 |
| 606 | 20 |
| 607 | 18 |
| 608 | 21 |
| 609 | 17 |
| 610 | 17 |
| 611 | 18 |
| 612 | 18 |
| 613 | 16 |
| 614 | 16 |
| 615 | 18 |
| 616 | 15 |
| 617 | 15 |
| 618 | 17 |
| 619 | 18 |
| 620 | 15 |

LIVERPOOL FLOORPLANS

Please note, the floorplans displayed are correct at the time of publication but the actual layout and arrangement of the furniture are subject to changes which will not materially affect the overall size or amenity offered by the room.

LIVERPOOL



TINLINGS

VITA STUDENT

TINLINGS



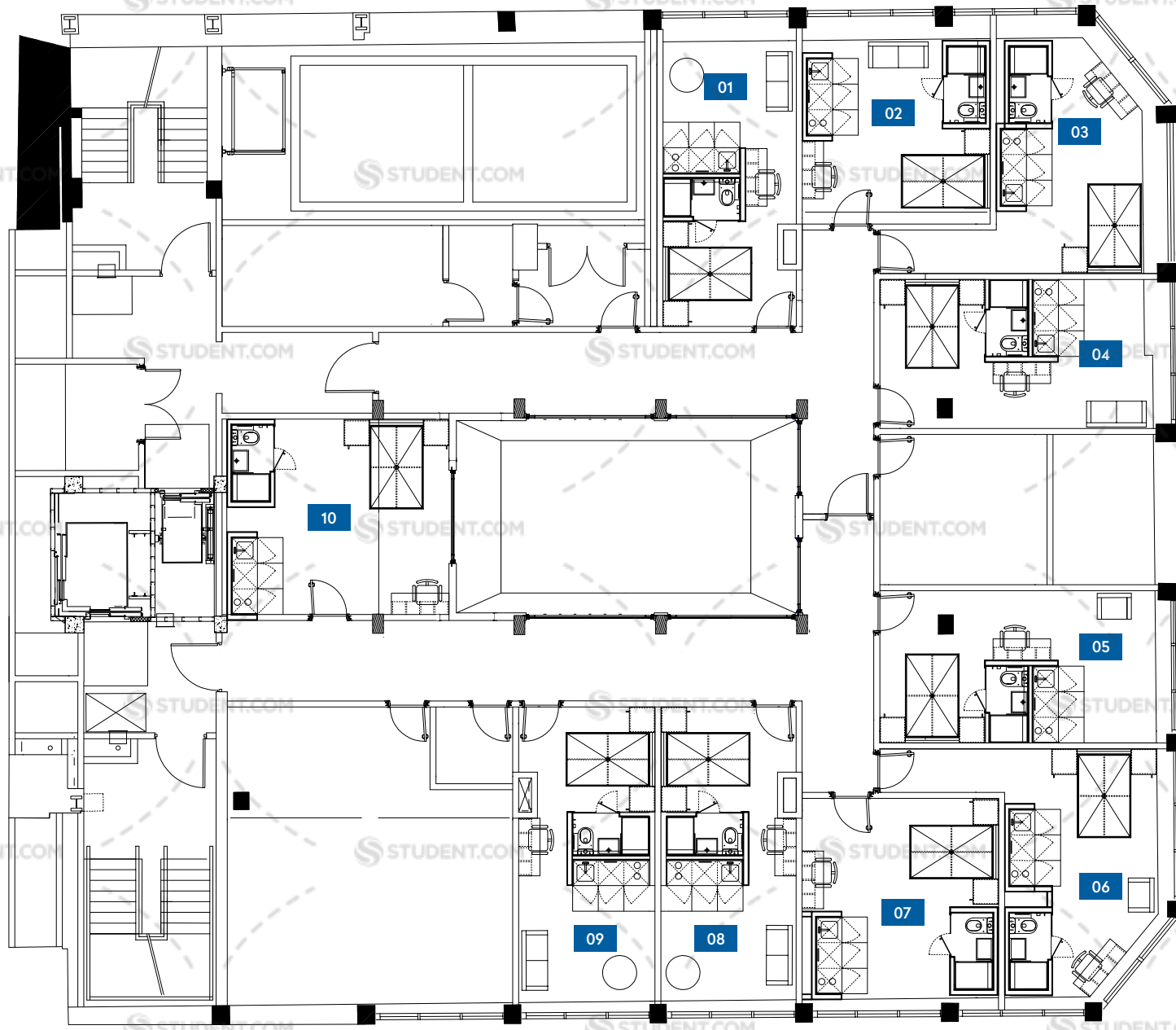
LG

Lower Ground Floor

Liverpool
Tinlings

- CLASSIC
- CLASSIC PLUS
- PREMIUM
- PREMIUM PLUS
- TWO BED
- PILLAR

| Room | Size (sqm) |
|------|------------|
| 01 | 22 |
| 02 | 20 |
| 03 | 20 |
| 04 | 20 |
| 05 | 21 |
| 06 | 23 |
| 07 | 22 |
| 08 | 21 |
| 09 | 21 |
| 10 | 19 |



ROAD

KASPERS →

First Floor

Liverpool
Tinlings

- CLASSIC
- CLASSIC PLUS
- PREMIUM
- PREMIUM PLUS
- TWO BED
- PILLAR

| Room | Size (sqm) |
|------|------------|
| 101 | 19 |
| 102 | 19 |
| 103 | 19 |
| 104 | 19 |
| 105 | 19 |
| 106 | 19 |
| 107 | 15 |
| 108 | 16 |
| 109 | 16 |
| 110 | 18 |
| 111 | 17 |
| 112 | 18 |
| 113 | 19 |
| 114 | 17 |
| 115 | 18 |
| 116 | 17 |
| 117 | 15 |
| 118 | 18 |
| 119 | 19 |
| 120 | 19 |
| 121 | 19 |
| 122 | 19 |
| 123 | 19 |



ROAD

KASPERS →

Second Floor

Liverpool
Tinlings

- CLASSIC
- CLASSIC PLUS
- PREMIUM
- PREMIUM PLUS
- TWO BED
- PILLAR



| Room | Size (sqm) |
|------|------------|
| 201 | 19 |
| 202 | 19 |
| 203 | 19 |
| 204 | 19 |
| 205 | 19 |
| 206 | 19 |
| 207 | 15 |
| 208 | 16 |
| 209 | 16 |
| 210 | 18 |
| 211 | 17 |
| 212 | 18 |
| 213 | 19 |
| 214 | 17 |
| 215 | 18 |
| 216 | 17 |
| 217 | 15 |
| 218 | 18 |
| 219 | 19 |
| 220 | 19 |
| 221 | 19 |
| 222 | 19 |
| 223 | 19 |

ROAD

KASPERS →

Third Floor

Liverpool
Tinlings

- CLASSIC
- CLASSIC PLUS
- PREMIUM
- PREMIUM PLUS
- TWO BED
- PILLAR

| Room | Size (sqm) |
|------|------------|
| 301 | 19 |
| 302 | 19 |
| 303 | 19 |
| 304 | 19 |
| 305 | 19 |
| 306 | 19 |
| 307 | 15 |
| 308 | 16 |
| 309 | 16 |
| 310 | 18 |
| 311 | 17 |
| 312 | 18 |
| 313 | 19 |
| 314 | 17 |
| 315 | 18 |
| 316 | 17 |
| 317 | 15 |
| 318 | 18 |
| 319 | 19 |
| 320 | 19 |
| 321 | 19 |
| 322 | 19 |
| 323 | 19 |



ROAD

KASPERS →

Fourth Floor

Liverpool
Tinlings

- CLASSIC
- CLASSIC PLUS
- PREMIUM
- PREMIUM PLUS
- TWO BED
- PILLAR

| Room | Size (sqm) |
|------|------------|
| 401 | 19 |
| 402 | 19 |
| 403 | 19 |
| 404 | 19 |
| 405 | 19 |
| 406 | 19 |
| 407 | 15 |
| 408 | 16 |
| 409 | 16 |
| 410 | 18 |
| 411 | 17 |
| 412 | 18 |
| 413 | 19 |
| 414 | 17 |
| 415 | 18 |
| 416 | 17 |
| 417 | 15 |
| 418 | 18 |
| 419 | 19 |
| 420 | 19 |
| 421 | 19 |
| 422 | 19 |
| 423 | 19 |



ROAD

KASPERS →

5

Fifth Floor

Liverpool
Tinlings

- CLASSIC
- CLASSIC PLUS
- PREMIUM
- PREMIUM PLUS
- TWO BED
- PILLAR



| Room | Size (sqm) |
|------|------------|
| 501 | 18 |
| 502 | 18 |
| 503 | 18 |
| 504 | 18 |
| 505 | 18 |
| 506 | 20 |
| 507 | 15 |
| 508 | 17 |
| 509 | 18 |
| 510 | 17 |
| 511 | 17 |
| 512 | 19 |
| 513 | 18 |
| 514 | 16 |
| 515 | 19 |
| 516 | 17 |
| 517 | 17 |
| 518 | 17 |
| 519 | 17 |
| 520 | 17 |

ROAD

KASPERS →

Sixth Floor

Liverpool
Tinlings

- CLASSIC
- CLASSIC PLUS
- PREMIUM
- PREMIUM PLUS
- TWO BED
- PILLAR



| Room | Size (sqm) |
|------|------------|
| 601 | 18 |
| 602 | 18 |
| 603 | 18 |
| 604 | 18 |
| 605 | 33 |
| 606 | 33 |
| 607 | 18 |
| 608 | 18 |
| 609 | 18 |
| 610 | 14 |

LIVERPOOL FLOORPLANS

Please note, the floorplans displayed are correct at the time of publication but the actual layout and arrangement of the furniture are subject to changes which will not materially affect the overall size or amenity offered by the room.

ROAD

KASPERS →

LIVERPOOL

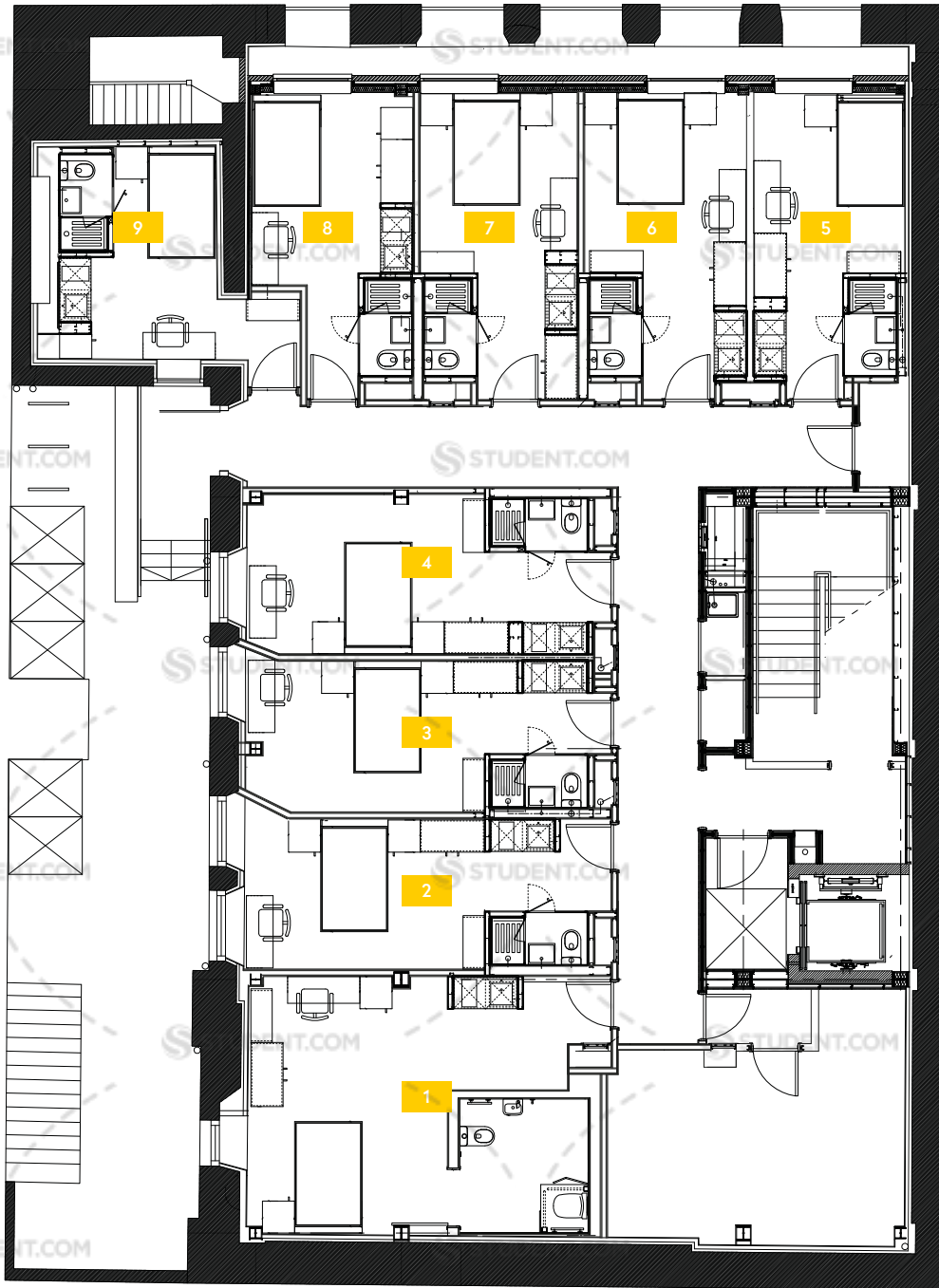


**THE
CHAPEL**

VITA STUDENT

THE CHAPEL





COURTYARD

ROAD

LG

Lower Ground Floor

Liverpool
The Chapel

- LITE
- CLASSIC
- CLASSIC PLUS
- PREMIUM
- PREMIUM PLUS
- ACCESSIBLE ROOM

| Room | Size (sqm) |
|------|------------|
| 1 | 32 |
| 2 | 20 |
| 3 | 19 |
| 4 | 20 |
| 5 | 17 |
| 6 | 17 |
| 7 | 17 |
| 8 | 16 |
| 9 | 16 |

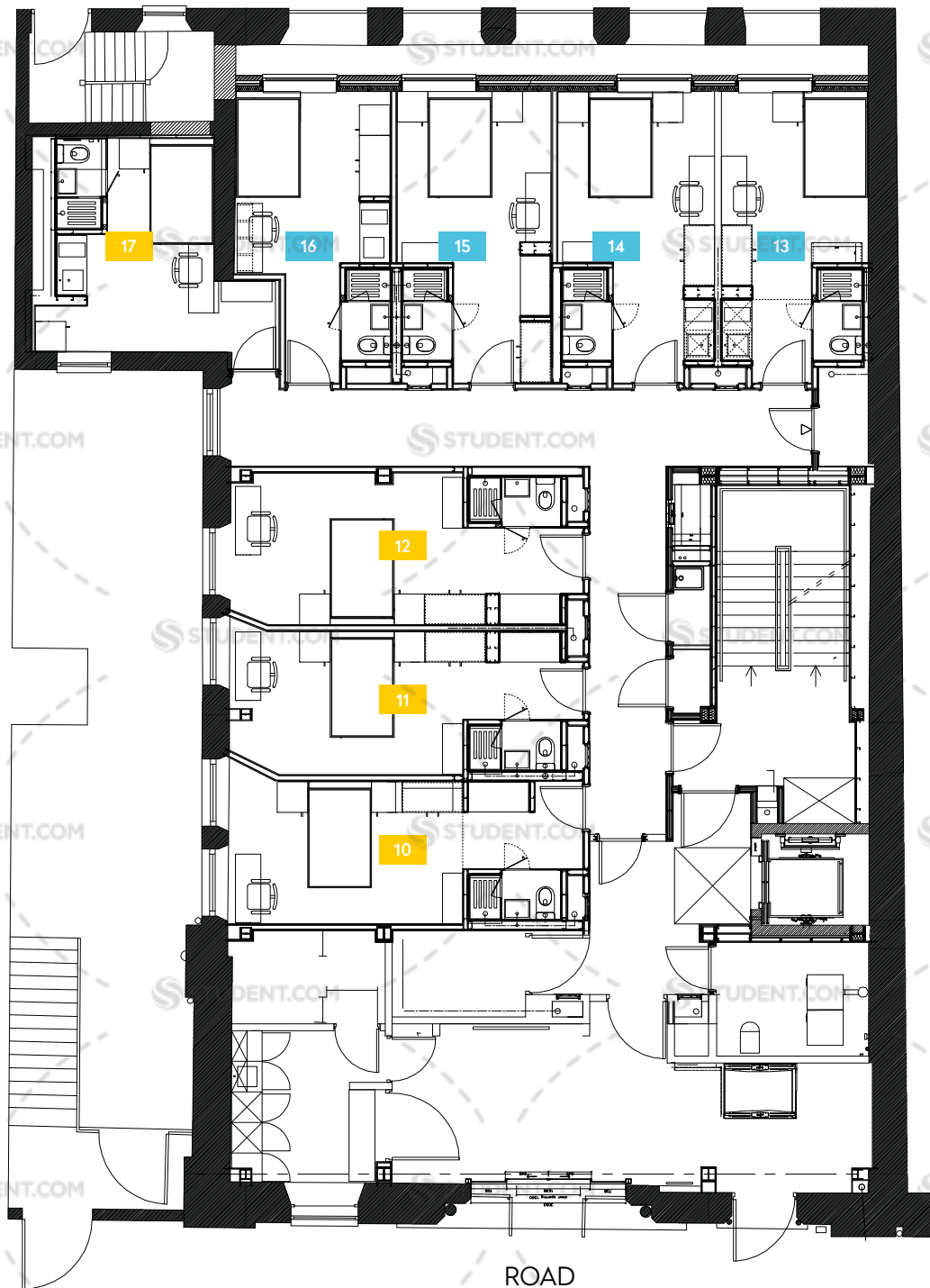
G

Ground Floor

Liverpool
The Chapel

- LITE
- CLASSIC
- CLASSIC PLUS
- PREMIUM
- PREMIUM PLUS
- ACCESSIBLE ROOM

| Room | Size (sqm) |
|------|------------|
| 10 | 20 |
| 11 | 20 |
| 12 | 20 |
| 13 | 17 |
| 14 | 17 |
| 15 | 17 |
| 16 | 16 |
| 17 | 16 |



COURTYARD

ROAD



1

First Floor

Liverpool
The Chapel

- LITE
- CLASSIC
- CLASSIC PLUS
- PREMIUM
- PREMIUM PLUS
- ACCESSIBLE ROOM

| Room | Size (sqm) |
|------|------------|
| 18 | 20 |
| 19 | 17 |
| 20 | 25 |
| 21 | 20 |
| 22 | 20 |
| 23 | 20 |
| 24 | 21 |
| 25 | 21 |
| 26 | 20 |
| 27 | 19 |
| 28 | 17 |


COURTYARD

ROAD

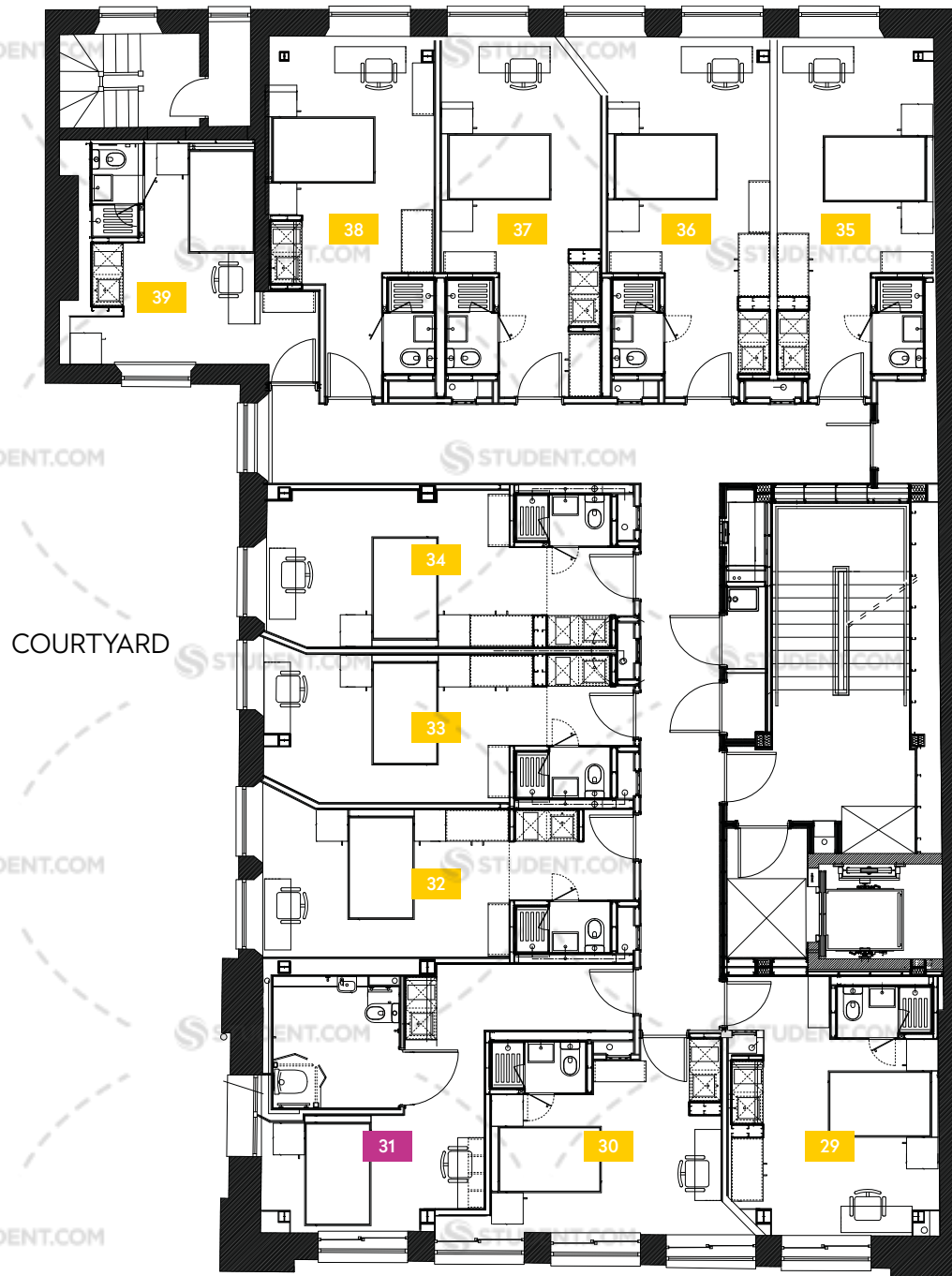
2

Second Floor

Liverpool
The Chapel

-  LITE
-  CLASSIC
-  CLASSIC PLUS
-  PREMIUM
-  PREMIUM PLUS
-  ACCESSIBLE ROOM

| Room | Size (sqm) |
|------|------------|
| 29 | 20 |
| 30 | 17 |
| 31 | 25 |
| 32 | 20 |
| 33 | 20 |
| 34 | 20 |
| 35 | 21 |
| 36 | 21 |
| 37 | 20 |
| 38 | 19 |
| 39 | 17 |



COURTYARD

ROAD

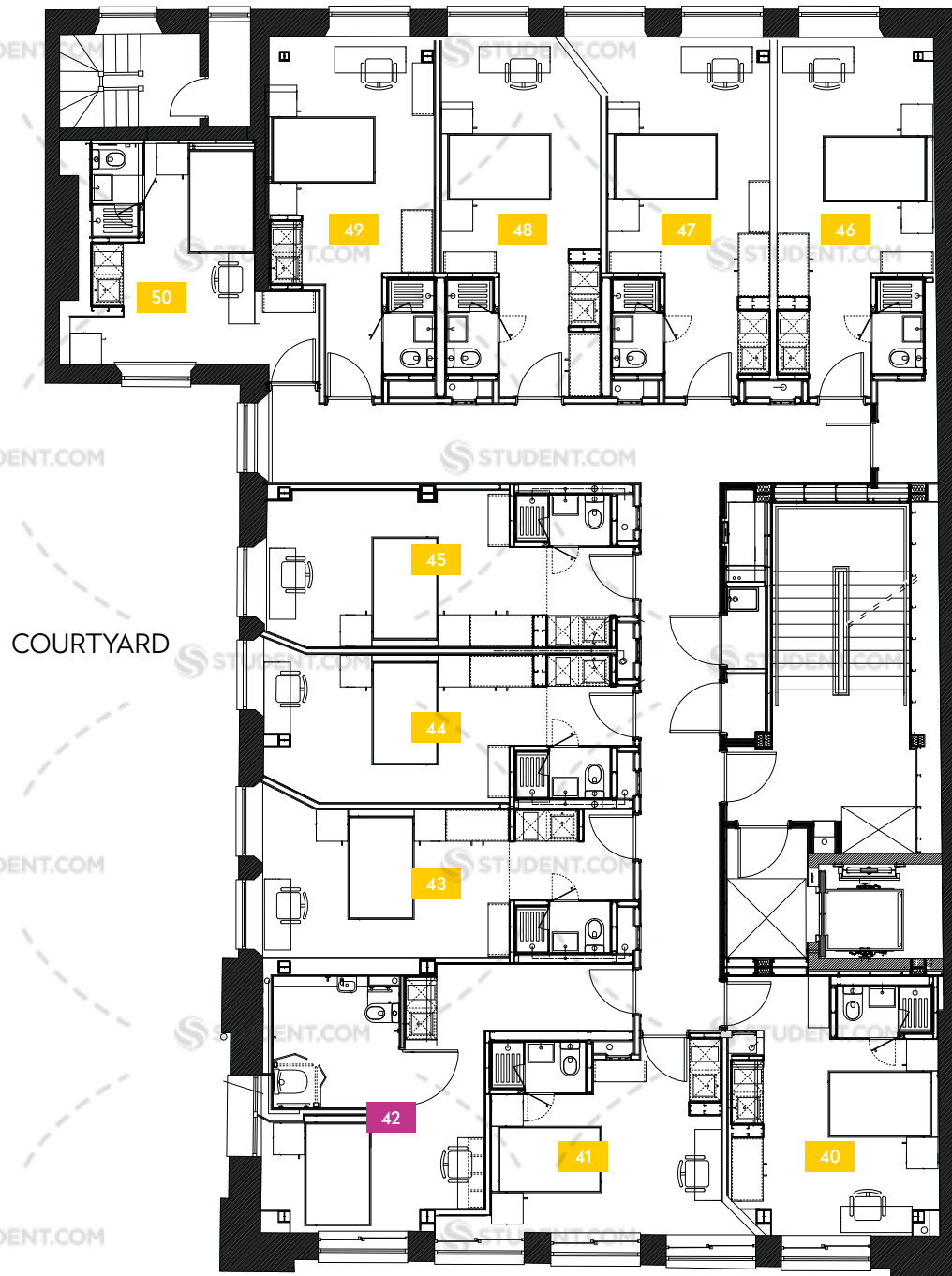
3

Third Floor

Liverpool
The Chapel

- LITE
- CLASSIC
- CLASSIC PLUS
- PREMIUM
- PREMIUM PLUS
- ACCESSIBLE ROOM

| Room | Size (sqm) |
|------|------------|
| 40 | 20 |
| 41 | 17 |
| 42 | 25 |
| 43 | 20 |
| 44 | 20 |
| 45 | 20 |
| 46 | 21 |
| 47 | 21 |
| 48 | 20 |
| 49 | 19 |
| 50 | 17 |



COURTYARD

ROAD

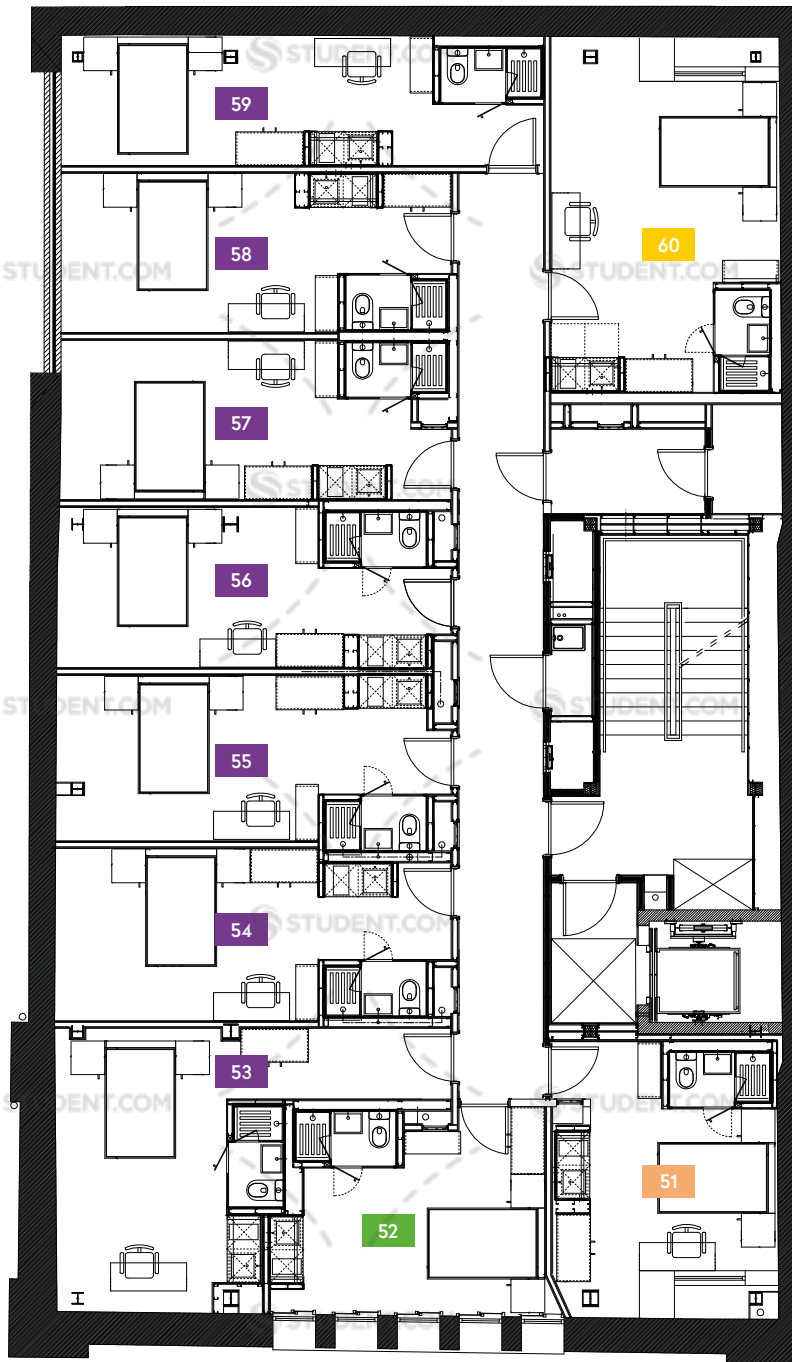
4

Fourth Floor

Liverpool
The Chapel

- LITE
- CLASSIC
- CLASSIC PLUS
- PREMIUM
- PREMIUM PLUS
- ACCESSIBLE ROOM

| Room | Size (sqm) |
|------|------------|
| 51 | 20 |
| 52 | 17 |
| 53 | 25 |
| 54 | 21 |
| 55 | 20 |
| 56 | 20 |
| 57 | 20 |
| 58 | 20 |
| 59 | 20 |
| 60 | 21 |



COURTYARD

ROAD

5

Fifth Floor

Liverpool
The Chapel

-  LITE
-  CLASSIC
-  CLASSIC PLUS
-  PREMIUM
-  PREMIUM PLUS
-  ACCESSIBLE ROOM

| Room | Size (sqm) |
|------|------------|
| 61 | 22 |
| 62 | 22 |
| 63 | 18 |
| 64 | 20 |
| 65 | 21 |
| 66 | 17 |
| 67 | 15 |
| 68 | 15 |

COURTYARD

ROAD

LIVERPOOL FLOORPLANS

Please note, the floorplans displayed are correct at the time of publication but the actual layout and arrangement of the furniture are subject to changes which will not materially affect the overall size or amenity offered by the room.

