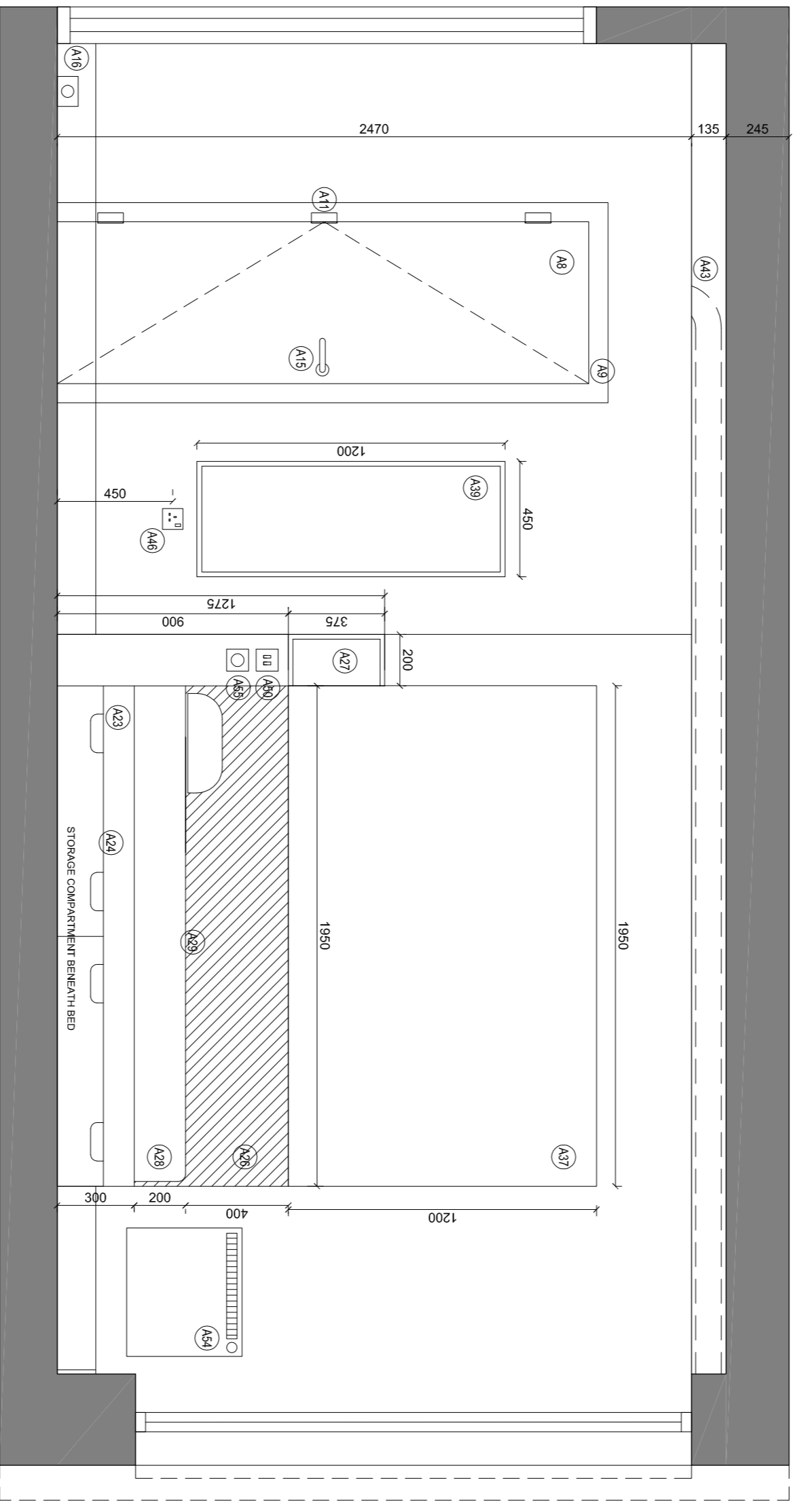
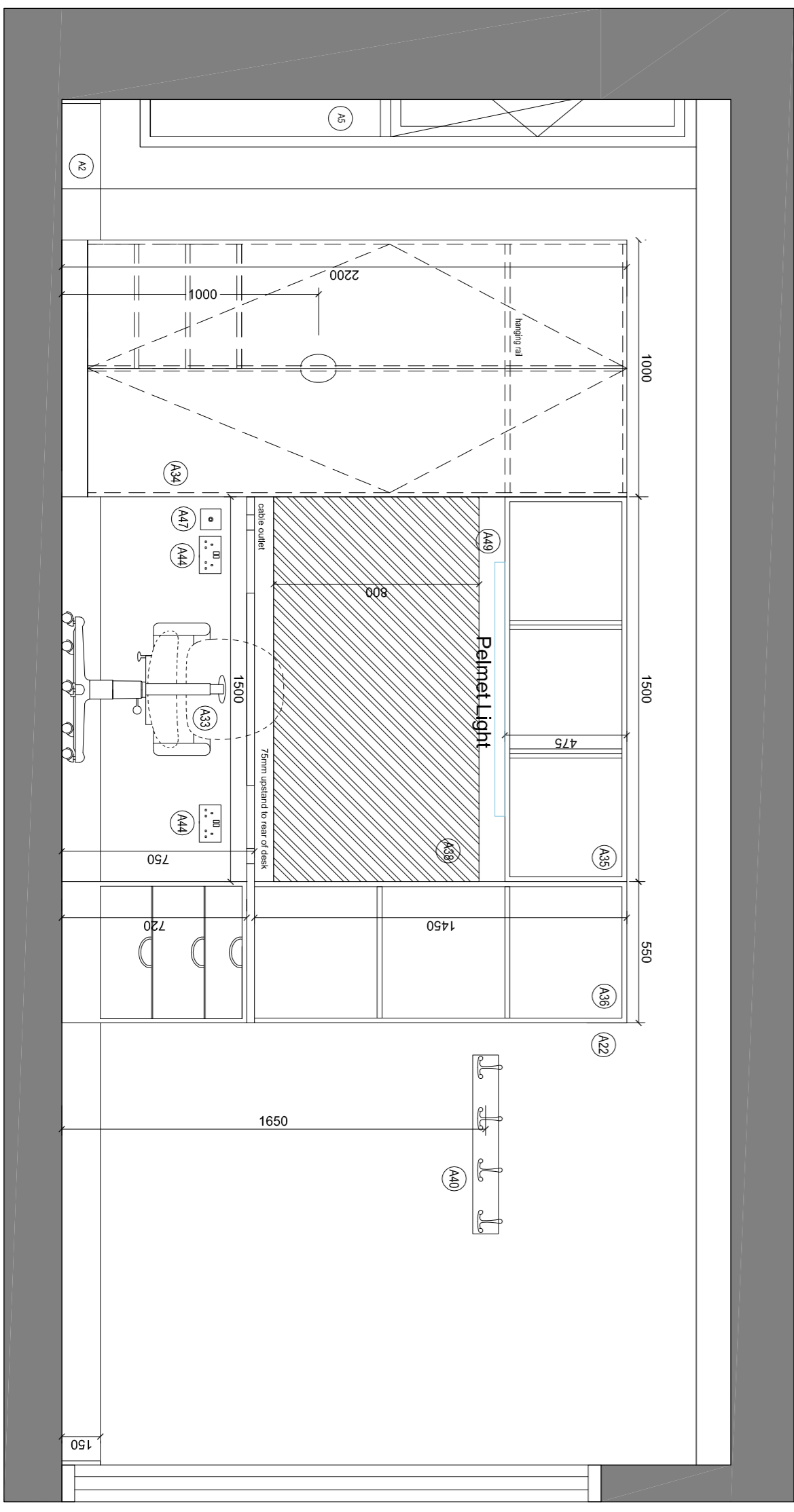


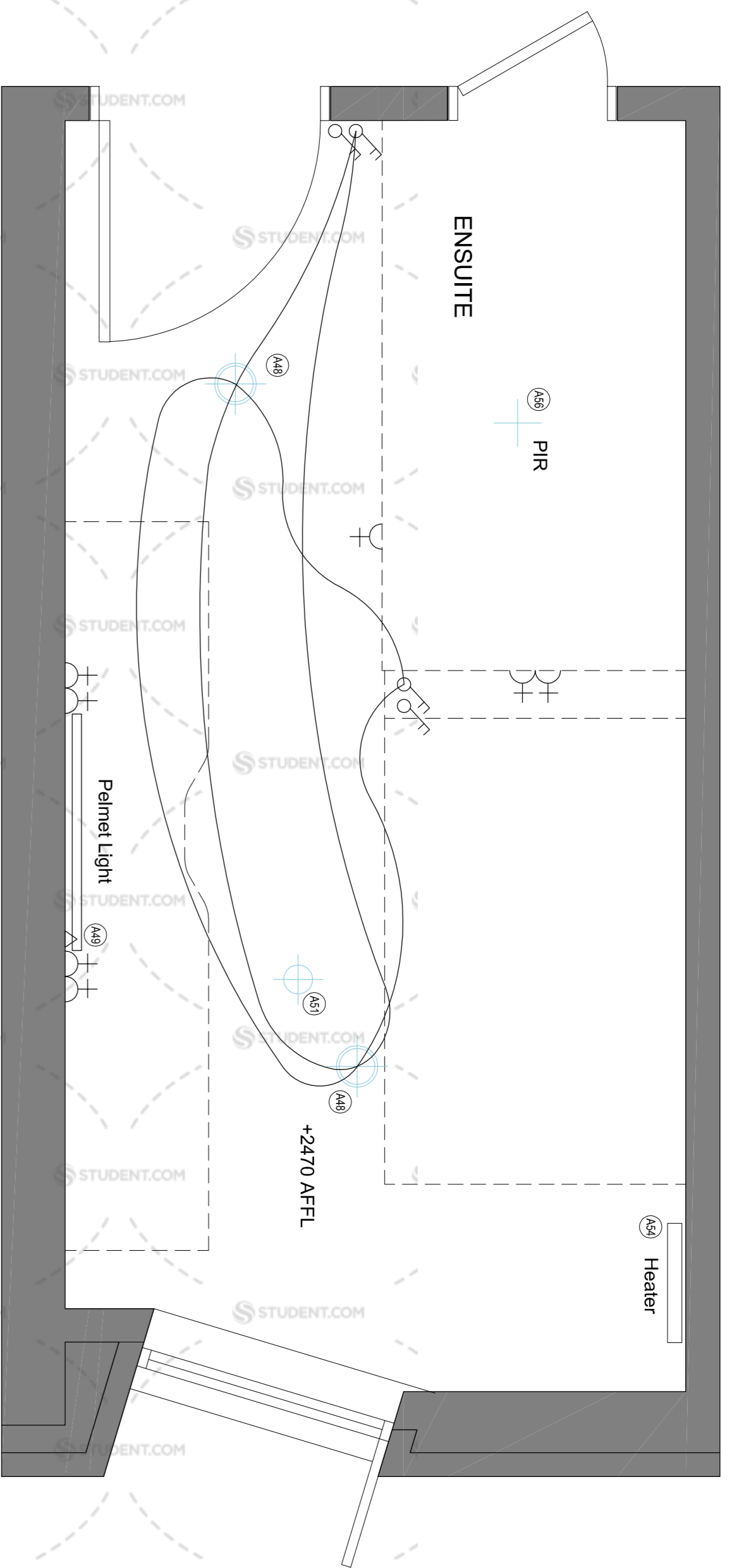
PLAN



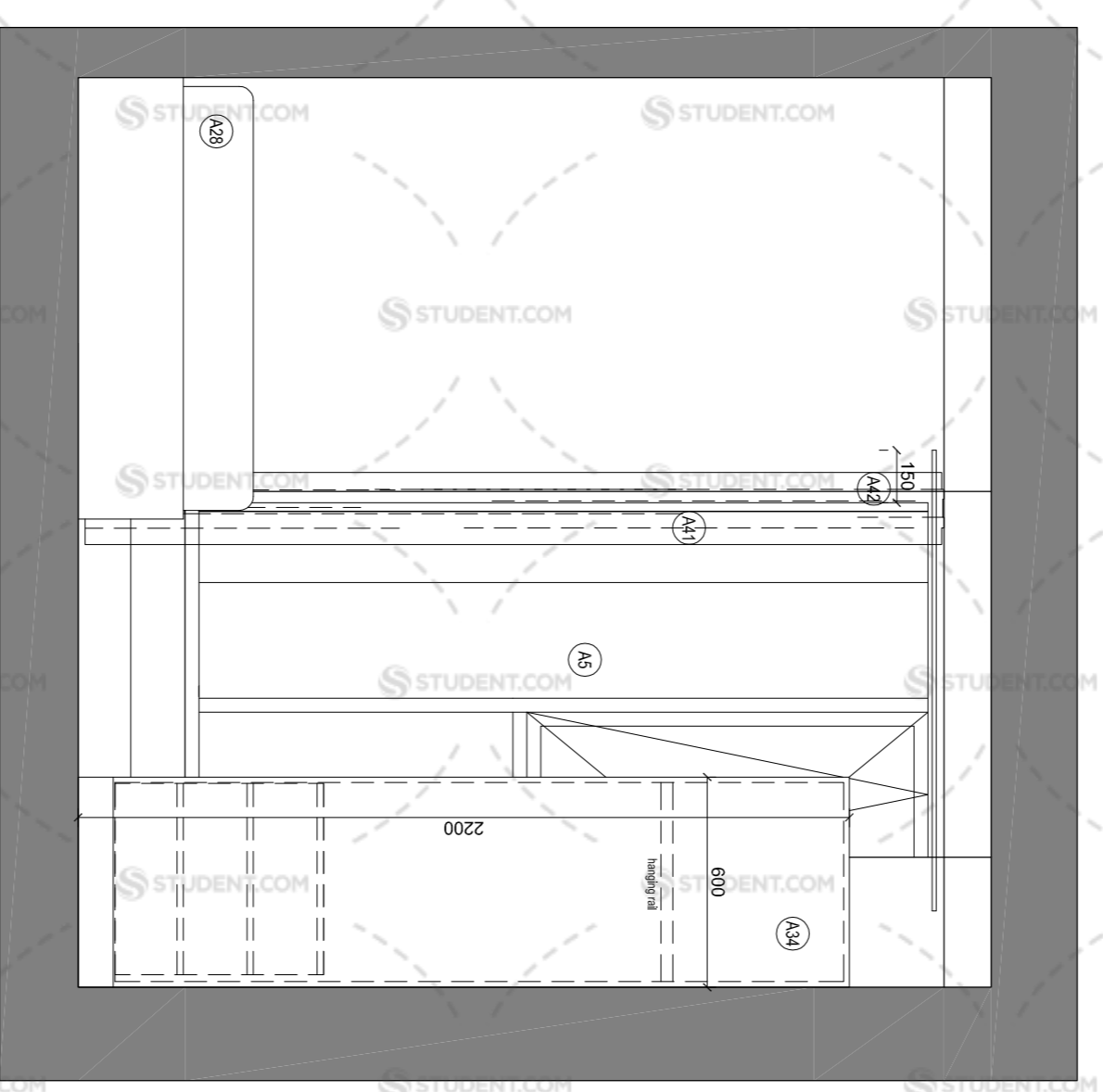
ELEVATION A



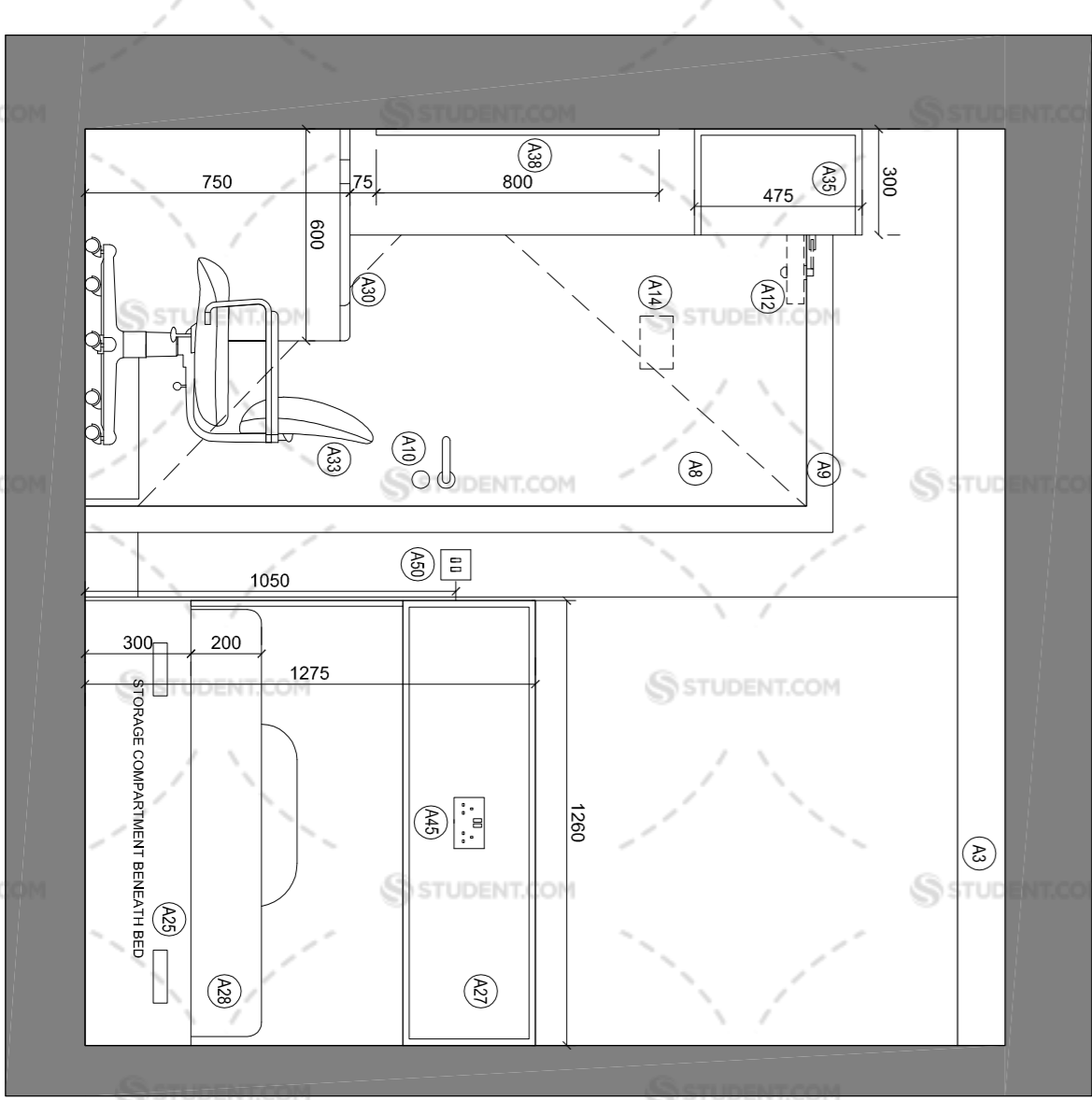
ELEVATION C



CEILING PLAN



ELEVATION B

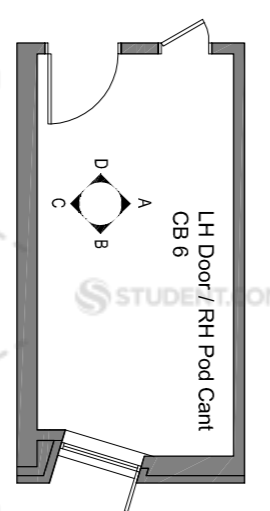


ELEVATION D

- LEGEND**
- CLUSTER BEDROOM
- A1 Dry-lined to receive paint finish
 - A2 Sliding 150 x 10mm period round, to receive paint finish
 - A3 Timber effect vinyl floor panel finish
 - A4 Timber effect vinyl floor panel finish
 - A5 Refer to window specification and drawings
 - A6 Opening vents to be tilt & turn (generally) to provide ventilation in accordance with the Project Ventilation Strategy and to provide access for safe cleaning from the inside. Restrictor with key override (subject to Client / CDMC approval)
 - A7 Timber veneered doorset with painted SW door frame OR Timber effect HPL faced doorset with painted steel door frame
 - A8 75 x 15mm architrave, to receive paint finish
 - A9 Standard (factory powered) DDA Compliant FR Electronic Lock with RFID technology with standard single spigot lock for manual override
 - A10 Bespoke built-in bedroom furniture with HPL finish to include different colours/finishes - refer to indicative furniture types, Soft Close drawers and hinges (120° hinges)
 - A11 Floor mounted door stop
 - A12 Room identity signage provided by Contractor as per Moland Street
 - A13 Timber veneered doorset with painted SW door frame OR Timber effect HPL faced doorset with painted steel door frame
 - A14 Timber veneered doorset with painted SW door frame OR Timber effect HPL faced doorset with painted steel door frame
 - A15 Lower latch and extended pull bar on inside for disabled use
 - A16 Hinges 1 | Pulls
 - A17 Sliding mounted door stop
 - A18 Bespoke built-in bedroom furniture with HPL finish to include different colours/finishes - refer to indicative furniture types, Soft Close drawers and hinges (120° hinges)
 - A19 Cabin Bed 340(h) x 1260(w) x 1950(l)mm O/A Frame Dimensions
 - A20 Hinged access panels with the horizontal mattress base to provide access to under bed storage
 - A21 Wall protection panel to wall side of bed 400(h) x 1850(l)mm
 - A22 Bedside steel unit with integrated power 1275(h) x 1260(w) x 200(d)mm
 - A23 4" Extra-deep Mattress (200mm dp) with 12.5 gauge springs, rod edges and standard Crib 5 FR fabric finish
 - A24 4" Standard Anti-Mat Energy Mattress Protector
 - A25 25mm to match desk
 - A26 Chrome Support Leg
 - A27 Chrome Support Leg
 - A28 Wardrobe - 2200 (h) x 1000 (w) x 600 (d)mm inc. 100 (h)mm plinth, Centre with light and low level hanging rails to one side, 3 no. shelves to other
 - A29 Wall mounted bookshelf - 1500 (w) x 475 (h) x 300 (d)mm over desk with panelled task lighting
 - A30 Tail Storage unit 2200 (h) x 550 (w) x 600 (d)mm at the end of the desk with 3 no. drawers up to 220 (h)mm and 3 no. open shelves 300mm deep (the lowest shelf to match desk)
 - A31 Fabric covered cupboard above bed - Wallside of bed / 1200 (h) x 1950 (l)mm or Bedhead / 625 (h) x 1260 (l)mm
 - A32 Fabric covered cupboard above desk
 - A33 Fabric Pin Board 800 (h) x 1500 (w)mm above desk
 - A34 4 no. fabric coat hooks mounted on wall plate to match bedroom furniture
 - A35 4 no. fabric coat hooks mounted on wall plate to match bedroom furniture
 - A36 Track to extend 150mm past window aperture or return to wall
 - A37 Each pod to be individually ventilated to an external grille (15l/second)
 - A38 2 no. DSSO adjacent to desk
 - A39 DSSO integrated within bed head
 - A40 DSSO adjacent to mirror
 - A41 DSSO adjacent to desk
 - A42 Lighting to achieve general illuminance levels of 100lux and 300lux above the desk
 - A43 Recessed LED Task lighting
 - A44 2 no. 2-Way light switches (by bedroom door and at bed-head) operating main light fittings & smart lights and smoke detectors as detailed in M & E Specification. This item will be covered in the follow-on stage 'F' warrant
 - A45 Pod heating switch within the en-suite pod services riser
 - A46 Gas heated hot water system (Gas boiler and CHP system)
 - A47 Electric heating system to be suitably sized to meet Building Regulations (Standard Part) and Part L3 (SAP) to be detailed in M & E Specification
 - A48 Electrical and plumbing to be detailed in M & E Specification
 - A49 DSSO adjacent to mirror
 - A50 DSSO adjacent to desk
 - A51 Lighting to achieve general illuminance levels of 100lux and 300lux above the desk
 - A52 1 no. PRR light controls set in ensuite ceiling

NOTE: WINDOW ELEVATIONS ARE INDICATIVE

KEY PLAN



Scale of Metres - 1:200

- Revision**
- A 24.07.14 Drawers removed from below desk
 - B 29.08.14 Wardrobe dimensions increased
 - C 12.09.14 Mirror located opposite wardrobes on pod wall
 - D 17.09.14 Vertical dimensions adjustment, Thickness wall amended
 - E 03.11.14 Added Reflected Ceiling Plan + Electrics & Lightings
- Additional light switch connection shown on ceiling plan and double socket moved to middle of headboard.
- Wardrobe width amended (1100mm).
- Tall Storage Unit width amended (550mm).
- Legend amended.
- PRR added to shower pod.
- Switches/ sockets level raised to 450mm above FFL.

- A21 Cabin Bed 340(h) x 1260(w) x 1950(l)mm O/A Frame Dimensions
- A22 Hinged access panels with the horizontal mattress base to provide access to under bed storage
- A23 Wall protection panel to wall side of bed 400(h) x 1850(l)mm
- A24 Bedside steel unit with integrated power 1275(h) x 1260(w) x 200(d)mm
- A25 4" Extra-deep Mattress (200mm dp) with 12.5 gauge springs, rod edges and standard Crib 5 FR fabric finish
- A26 4" Standard Anti-Mat Energy Mattress Protector
- A27 25mm to match desk
- A28 Chrome Support Leg
- A29 Chrome Support Leg
- A30 Wardrobe - 2200 (h) x 1000 (w) x 600 (d)mm inc. 100 (h)mm plinth, Centre with light and low level hanging rails to one side, 3 no. shelves to other
- A31 Wall mounted bookshelf - 1500 (w) x 475 (h) x 300 (d)mm over desk with panelled task lighting
- A32 Tail Storage unit 2200 (h) x 550 (w) x 600 (d)mm at the end of the desk with 3 no. drawers up to 220 (h)mm and 3 no. open shelves 300mm deep (the lowest shelf to match desk)
- A33 Fabric covered cupboard above bed - Wallside of bed / 1200 (h) x 1950 (l)mm or Bedhead / 625 (h) x 1260 (l)mm
- A34 Fabric covered cupboard above desk
- A35 Fabric Pin Board 800 (h) x 1500 (w)mm above desk
- A36 4 no. fabric coat hooks mounted on wall plate to match bedroom furniture
- A37 4 no. fabric coat hooks mounted on wall plate to match bedroom furniture
- A38 Track to extend 150mm past window aperture or return to wall
- A39 Each pod to be individually ventilated to an external grille (15l/second)
- A40 2 no. DSSO adjacent to desk
- A41 DSSO integrated within bed head
- A42 DSSO adjacent to mirror
- A43 DSSO adjacent to desk
- A44 Lighting to achieve general illuminance levels of 100lux and 300lux above the desk
- A45 Recessed LED Task lighting
- A46 2 no. 2-Way light switches (by bedroom door and at bed-head) operating main light fittings & smart lights and smoke detectors as detailed in M & E Specification. This item will be covered in the follow-on stage 'F' warrant
- A47 Pod heating switch within the en-suite pod services riser
- A48 Gas heated hot water system (Gas boiler and CHP system)
- A49 Electric heating system to be suitably sized to meet Building Regulations (Standard Part) and Part L3 (SAP) to be detailed in M & E Specification
- A50 Electrical and plumbing to be detailed in M & E Specification
- A51 DSSO adjacent to mirror
- A52 DSSO adjacent to desk
- A53 Lighting to achieve general illuminance levels of 100lux and 300lux above the desk
- A54 1 no. PRR light controls set in ensuite ceiling

Manson Architects

London Road
10 Balgort Road
Edinburgh EH1, SBL
T: 0131 225 2655
F: 0131 226 2716
E: info@mansonarchitects.co.uk
www.mansonarchitects.co.uk

Watkin Jones

Client: **Watkin Jones**

Project: **Abbyhill Student Residences**

Drawing Title: **Level 01 Plan**

Rev: **CD6 - LH Door / RH Pod Cant**

Date: **12/09/14** Scale: **1:20 @ A1 Draw** MVO

Issue Status: **PRELIMINARY**

Drawing No: **1975_605** Rev: **E**

Author: **Pauline O'Brien**
11 South 7th Street
Denver CO 80202, USA
T: +1 303 233 8848
E: pauline@mansonarchitects.co.uk
www.mansonarchitects.co.uk

Checker: **John Bannister**
10 Balgort Road
Edinburgh EH1, SBL
T: +44 (0)131 226 2655
F: +44 (0)131 226 2716
E: john@mansonarchitects.co.uk
www.mansonarchitects.co.uk

All dimensions are levels to be checked on site and the Architect is not responsible for any discrepancies between the information provided and the actual dimensions of the building. All dimensions are subject to change without notice. The Architect is not responsible for any discrepancies between the information provided and the actual dimensions of the building.