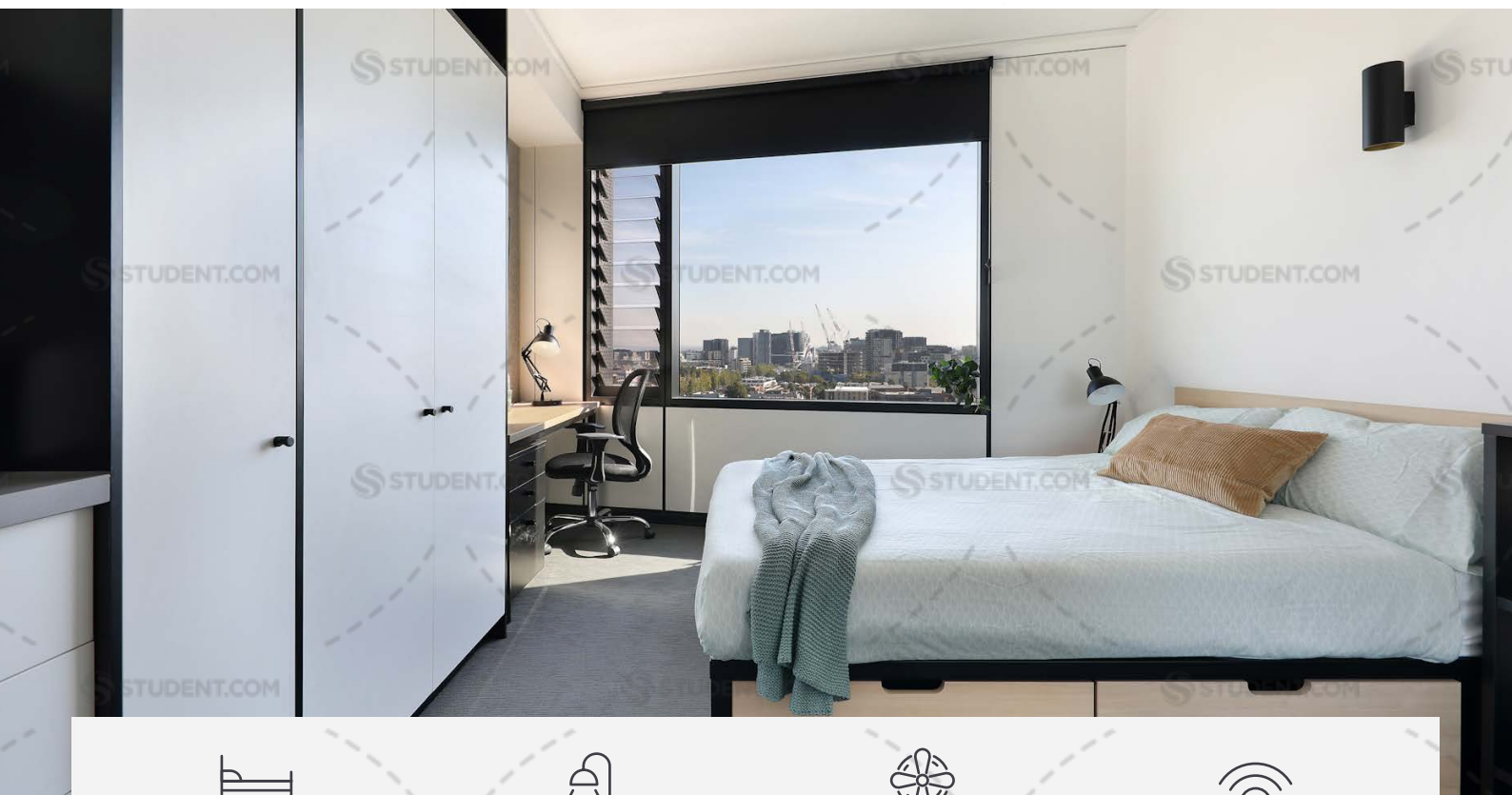




IGLU MELBOURNE CITY

STUDIO APARTMENTS



Sleeps 1-2*



Private bathroom



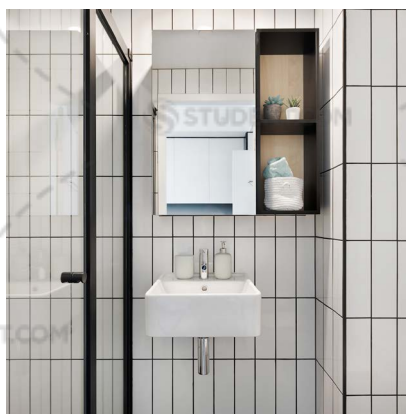
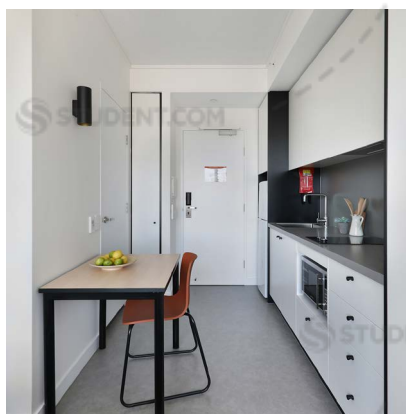
Air conditioning



Unlimited wi-fi

Live in the heart of Melbourne
in a cool studio apartment,
with private living and study
space, and friends next door.

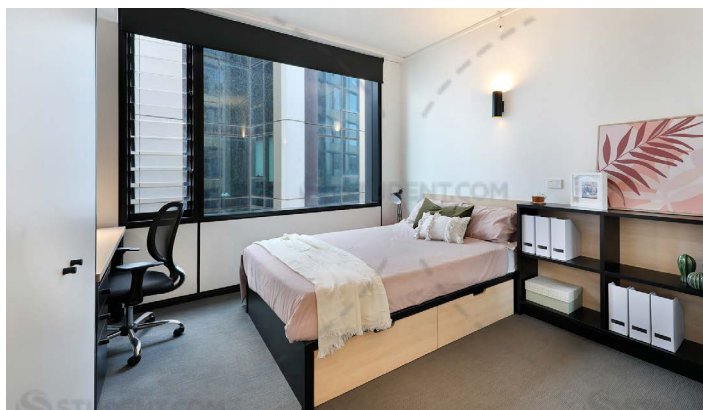
Sound cool?



- › Each studio has a private ensuite bathroom and air-conditioning
- › Features well-appointed kitchenette with eating area for self-catering
- › Unlimited high-speed wi-fi is included and available throughout

INSIDE THE STUDIO

All images are illustrative only and indicative of Iglu's finishes and features.



STANDARD STUDIO APARTMENTS



PREMIUM STUDIO APARTMENTS



FEATURES AND INCLUSIONS

PRIVATE STUDIO APARTMENT

- › Secure swipe card
- › Double bed with under bed storage
- › Ensuite bathroom
- › Air-conditioning / heating
- › HD television
- › Study desk, lamp, table and chairs
- › Pinboard and bookshelf
- › Built-in wardrobe and full length mirror
- › Kitchenette with microwave, cooktop, refrigerator, kettle and toaster
- › Louvre window with block-out blinds

ENSUITE BATHROOM

- › Shower
- › Toilet
- › Basin
- › Mirror
- › Towel rail
- › Exhaust fan
- › Storage cabinet and shelving

* A limited number of couple-share premium studios are available. Additional fees apply.

♿ Accessible apartments available



ONE HANDY ALL-INCLUSIVE FEE

Your weekly rent includes all of this plus your water, electricity, access to 24/7 onsite support and lots of cool events.

IGLU MELBOURNE CITY

STANDARD STUDIO APARTMENTS

MATTRESS SIZE

› Double bed: 137 x 187 cm

STUDIO LAYOUT 01

› Approx. 21m²

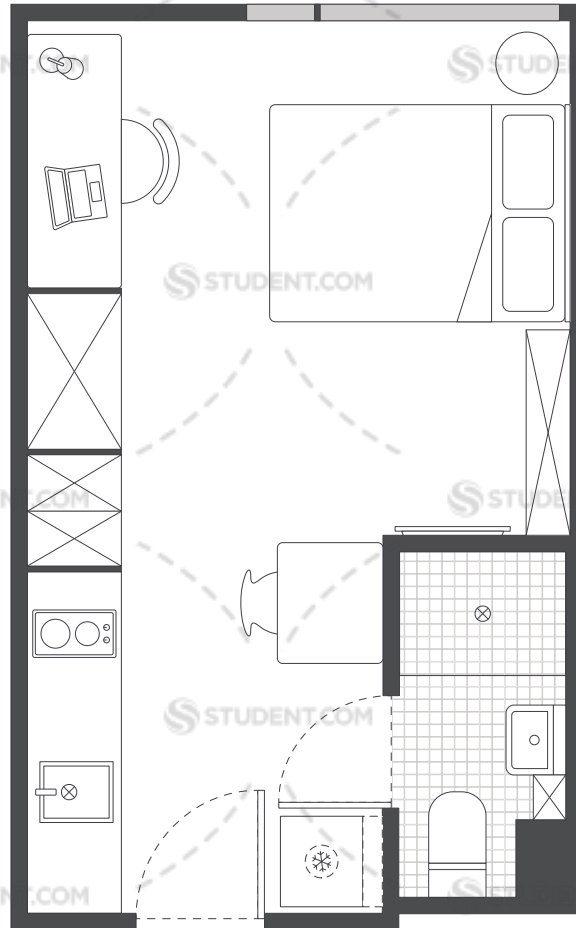
STUDIO LAYOUT 02

› Approx. 21m²

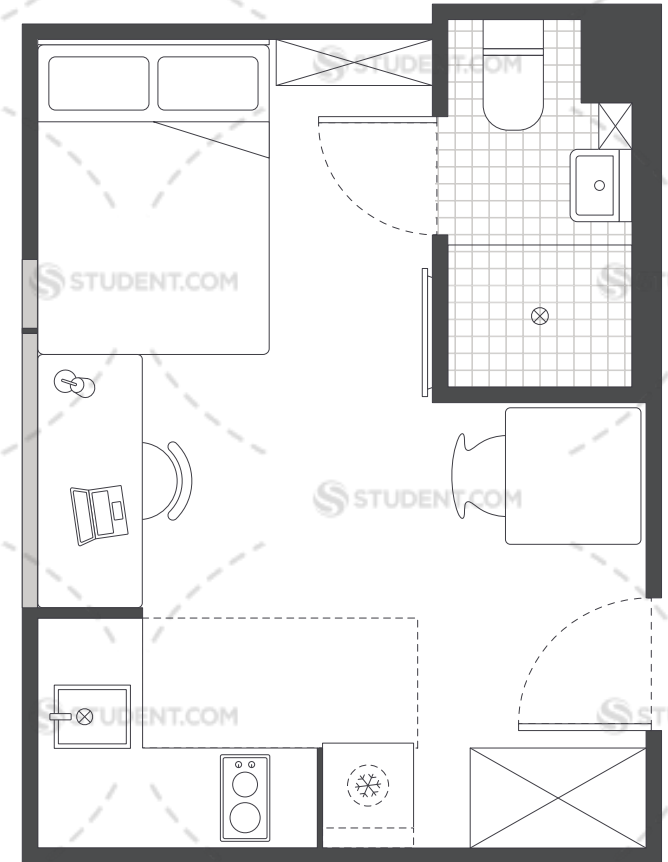
Room allocations are based on availability.

All floorplans are illustrative only and indicative of Iglu's finishes and features.

1



2



❄ Refrigerator unit ☒ Shelving / storage ■ Window / glass

IGLU MELBOURNE CITY

PREMIUM STUDIO APARTMENTS

MATTRESS SIZE

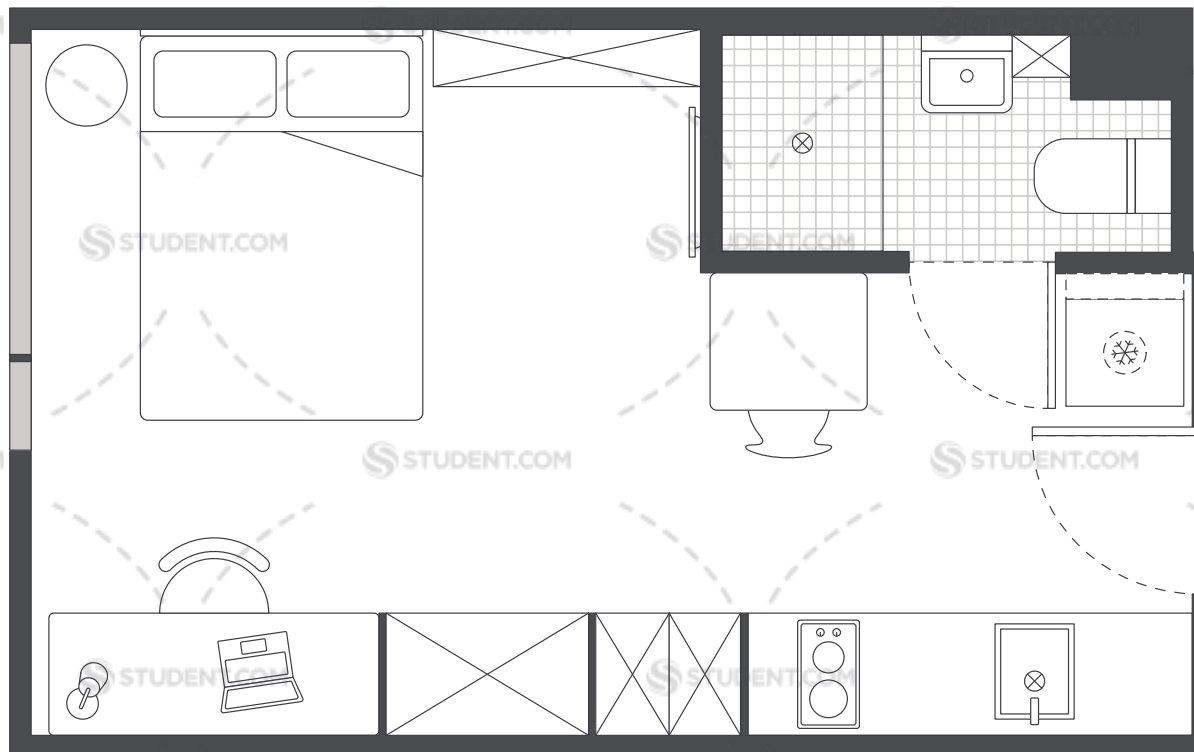
- › Double bed: 137 x 187 cm

STUDIO LAYOUT

- › **North Tower:** on levels 1 to 9, north facing
- › **South Tower:** on levels 11 upwards
- › Approx. 21m²



Premium Studios offer district views over the Queen Victoria Market.



Room allocations are based on availability.

All floorplans are illustrative only and indicative of Iglu's finishes and features.

Key



Refrigerator unit



Shelving / storage



Window / glass