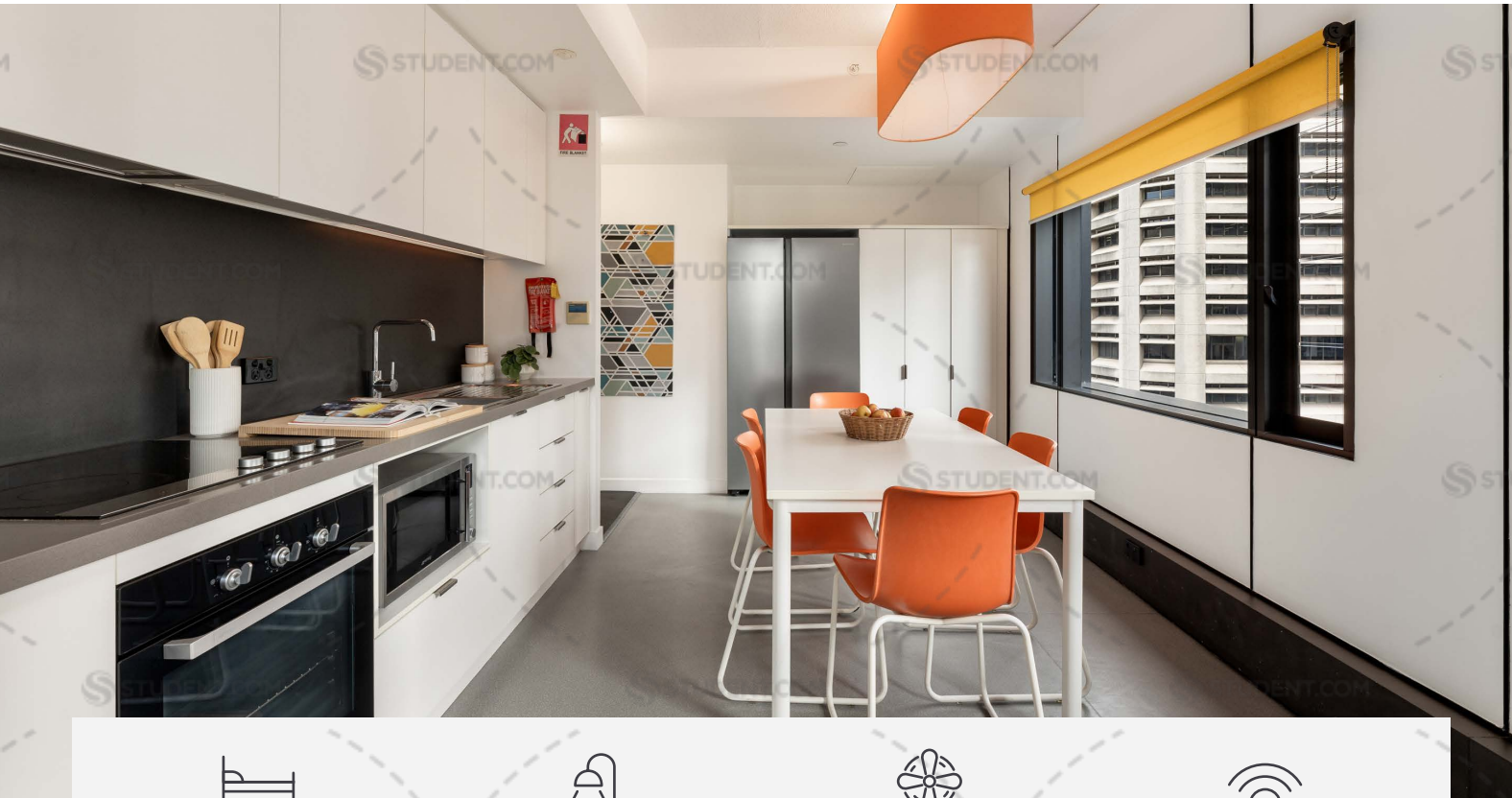




# IGLU BRISBANE CITY

## 6 BEDROOM 3 BATH SHARE APARTMENTS



6 bedrooms



3 share bathrooms



Air conditioning



Unlimited wi-fi

Living in a shared student apartment is a great way to meet people and make new friends. And it's fully furnished!

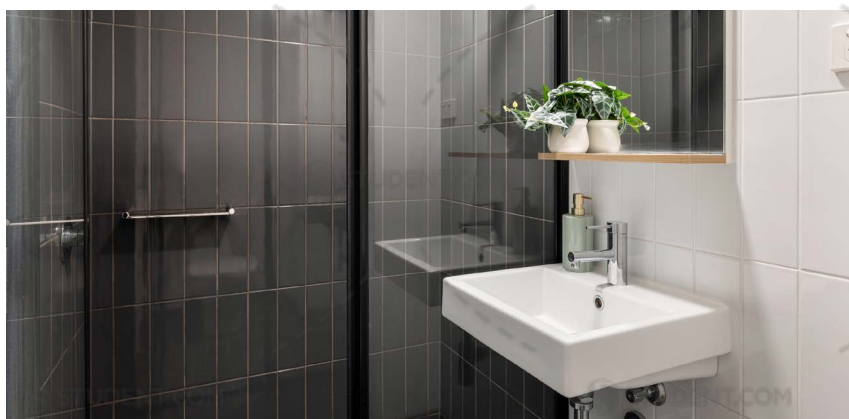
Pretty cool really.

- › Each bedroom has secure access and air-conditioning
- › Apartments feature a large kitchen, lounge and dining area
- › Unlimited high-speed wi-fi is included and available throughout



## INSIDE THE APARTMENT

All images are illustrative only and indicative of Iglu's finishes and features.



## FEATURES AND INCLUSIONS

### SHARED SPACE

- › HD television
- › Air-conditioning / heating
- › Lounge area with couch, coffee table and ottomans
- › Dining table and chairs
- › Bucket and mop, iron and vacuum
- › Fully equipped kitchen with:
  - oven, microwave, cooktop
  - refrigerator and freezer
  - kettle and toaster

### PRIVATE BEDROOM

- › Secure swipe card
- › Air-conditioning / heating
- › King single bed with built-in storage
- › Built in reading light
- › Study desk, chair, lamp and pinboard
- › Bookshelf and storage
- › Built-in wardrobe and full length mirror
- › Acoustic louvre windows

### SHARED BATHROOM

- › Shower
- › Toilet
- › Basin
- › Mirror
- › Towel rail
- › Exhaust fan
- › Storage cabinet and shelving



### ONE HANDY ALL-INCLUSIVE FEE

Your weekly rent includes all of this plus your water, electricity, access to 24/7 onsite support and lots of cool events.

IGLU BRISBANE CITY

6 BEDROOM 3 BATH SHARE APARTMENTS

MATTRESS SIZE

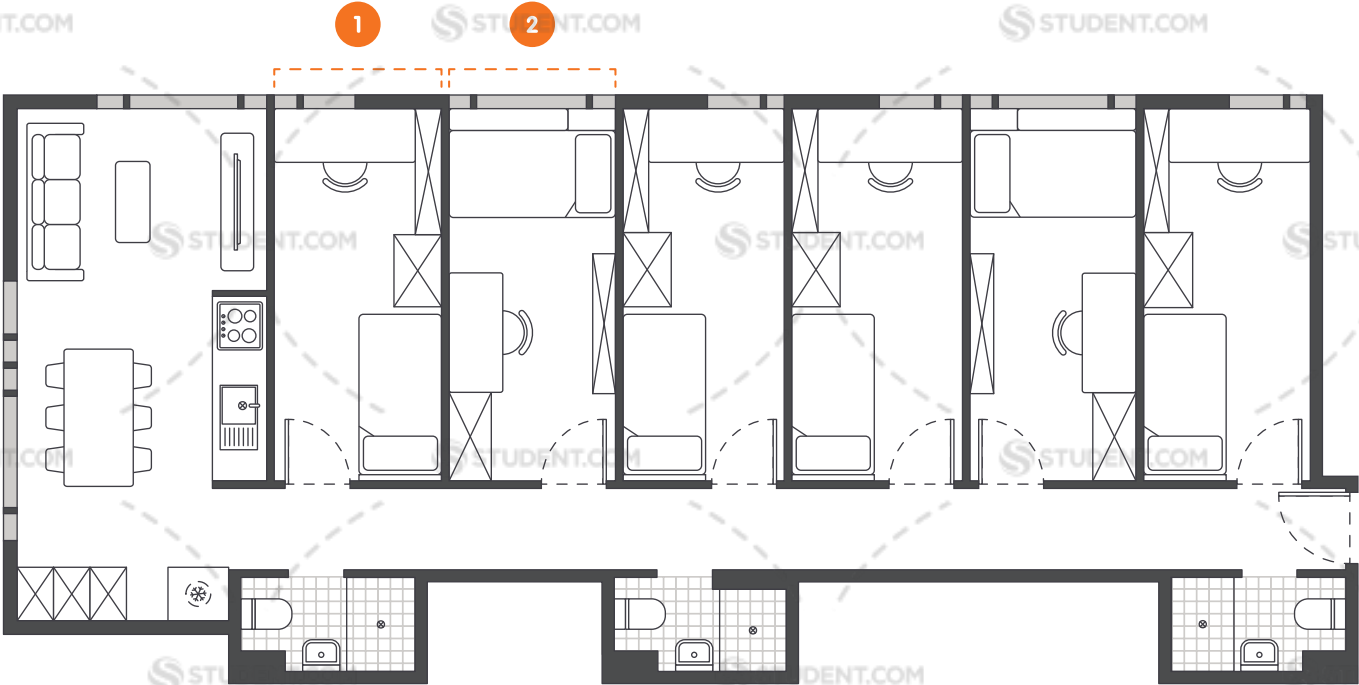
- › King single bed: 106 x 203 cm

SHARE KITCHEN & DINING AREA

- › Approx. 20.1m²

BEDROOM LAYOUT

- › Located on floors 2 to 22
- › Approx. 10.5m²



Room allocations are based on availability.

All floorplans are illustrative only and indicative of Iglu’s finishes and features.

❄ Refrigerator unit

☒ Shelving / storage

■ Window / glass

Key