

C9 & C9 M

1 Bedroom/1 Bathroom

Internal 51m²

External 8m²

Total 59m²

Apartment Numbers

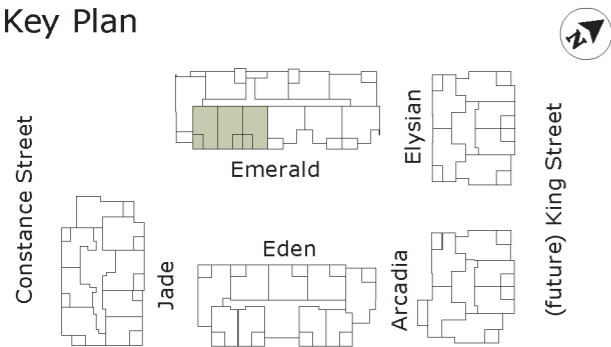
Building Emerald

C9	C9 M
3304, 3302, 3402, 3502,	3303, 3403, 3503,
3504, 3602, 3604, 3702,	3603, 3703, 3803,
3704, 3802, 3804, 3902,	3903
3904	

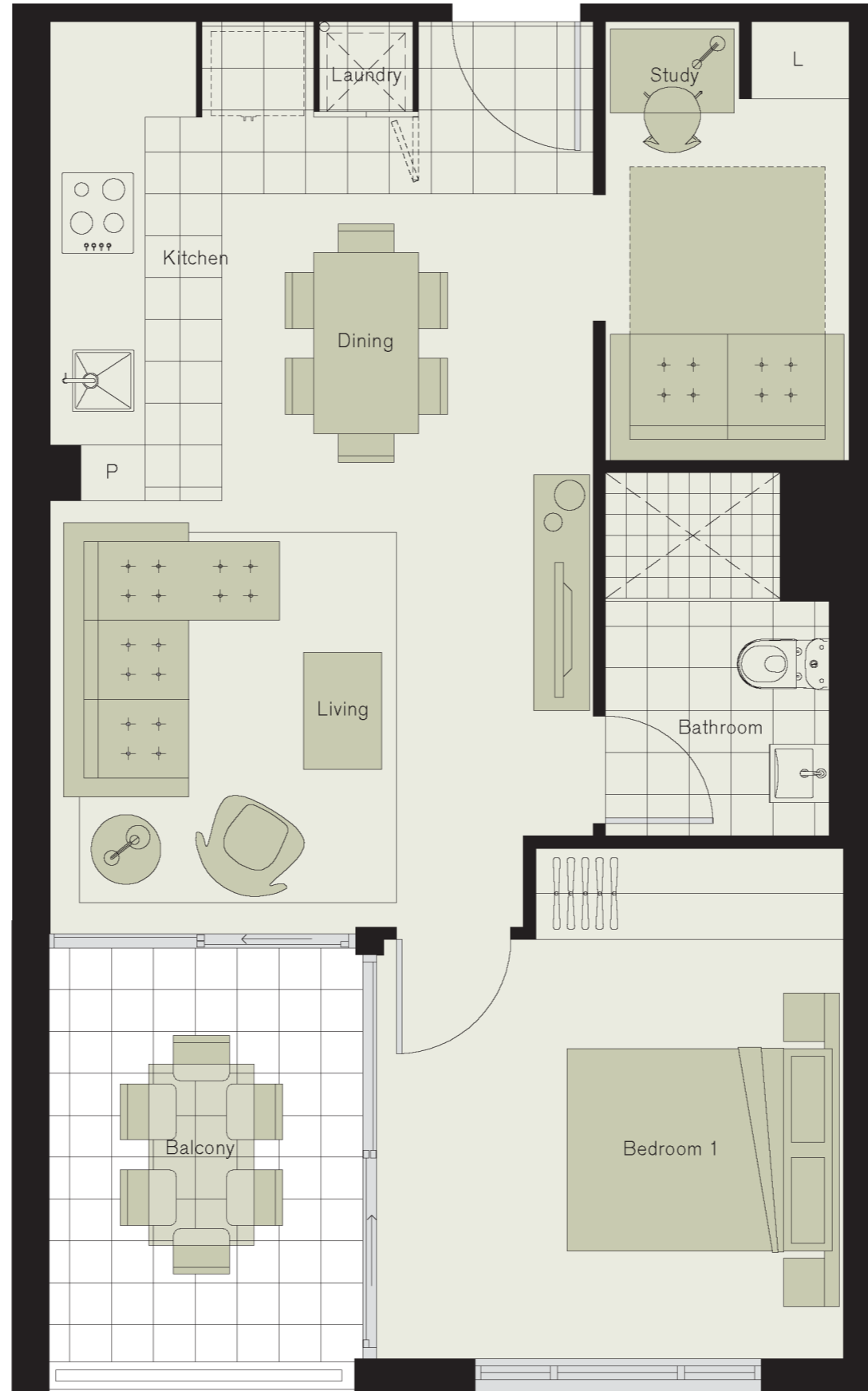
Included but not shown:

- Reverse cycle A/C to master bedroom and living room
- Ceiling fans to all bedrooms and living room
- Telephone/Internet connection to master bedroom, living room and study areas
- Pay TV and FTA TV connection to master bedroom and living room

Key Plan



Please note that this floor plan was produced prior to completion of construction. Dimensions and areas are approximate. Changes may be made during development and dimensions, tile setout, areas, fittings, finishes and specifications are subject to change without notice in accordance with the provisions of the Contract of Sale. The furniture, curtains, design light fixtures, garden planters and barbecues depicted are not included with any sale. NOTE: Bulkheads necessary for services and structure are not depicted. 20130910



EMERALD

