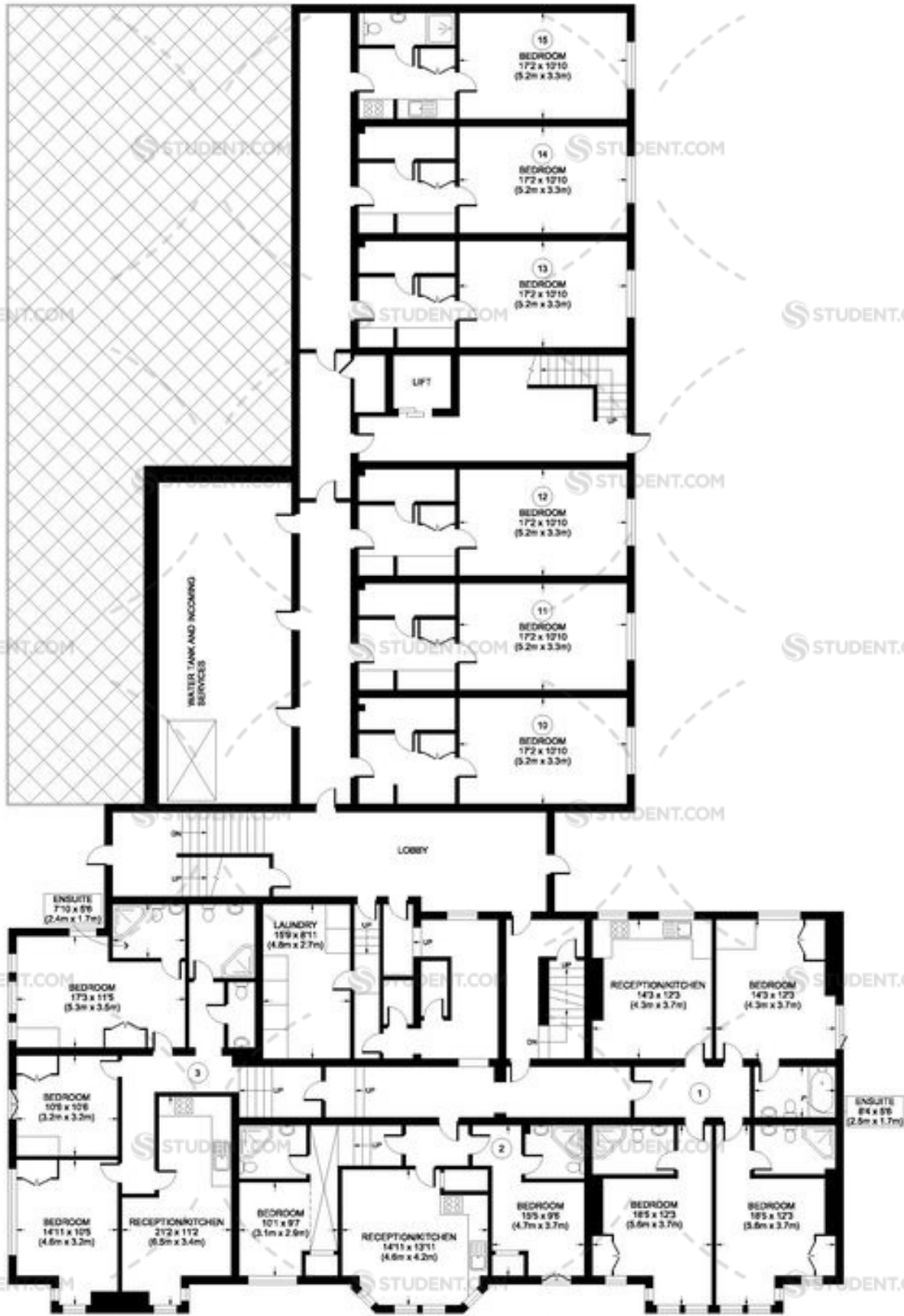




GROUND FLOOR  
GROSS INTERNAL  
FLOOR AREA 6038 SQ FT

APPROX. GROSS INTERNAL FLOOR AREA: 6038 SQ FT / 760 SQM  
Ref. Copyright Lumiere Digital

Disclaimer: Floor plan measurements are approximate and are for illustrative purposes only. While we do not doubt the floor plan accuracy and completeness, you or your advisors should conduct a careful, independent investigation of the property in respect of monetary valuation.



LOWER GROUND FLOOR  
GROSS INTERNAL  
FLOOR AREA 6860 SQ FT

APPROX. GROSS INTERNAL FLOOR AREA: 6860 SQ FT / 637 SQM  
Ref. Copyright Lumiere Digital

Disclaimer: Floor plan measurements are approximate and are for illustrative purposes only. While we do not doubt the floor plan accuracy and completeness, you or your advisors should conduct a careful, independent investigation of the property in respect of monetary valuation.

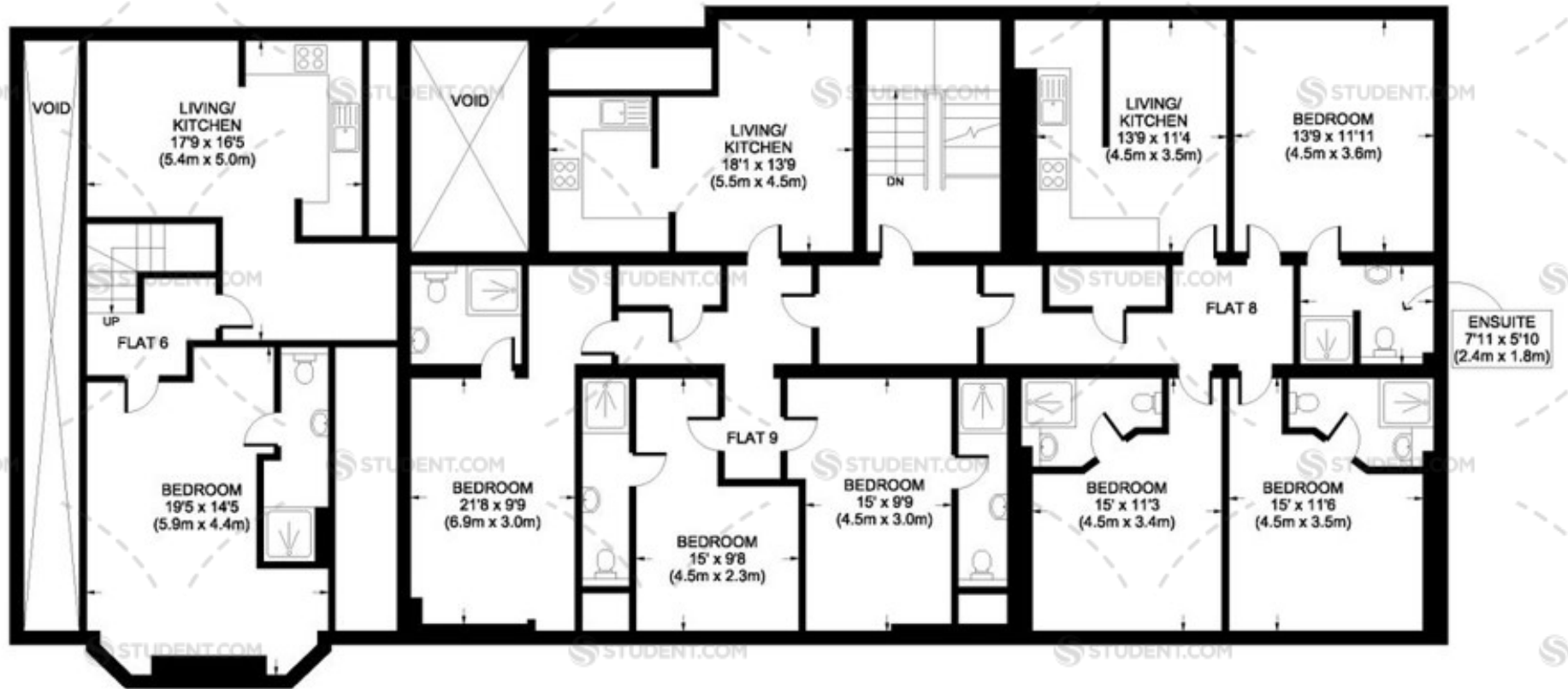


FIRST FLOOR  
GROSS INTERNAL  
FLOOR AREA 8610 SQ FT

APPROX. GROSS INTERNAL FLOOR AREA: 8610 SQ FT / 800 SQM  
Ref. Copyright Lumiere Digital

Disclaimer: Floor plan measurements are approximate and are for illustrative purposes only. While we do not doubt the floor plan accuracy and completeness, you or your advisors should conduct a careful, independent investigation of the property in respect of monetary valuation.

Burns Street, LE2



ATTIC FLOOR  
GROSS INTERNAL  
FLOOR AREA 2764 SQ FT

APPROX. GROSS INTERNAL FLOOR AREA: 2764 SQ FT / 257 SQM  
Ref: Copyright Lumiere digital

Disclaimer: Floor plan measurements are approximate and are for illustrative purposes only. While we do not doubt the floor plan accuracy and completeness, you or your advisors should conduct a careful, independent investigation of the property in respect of monetary valuation